



## Bersham Enterprise Centre, Plas Grono Road, Wrexham, LL14 4EG

Bersham Enterprise Park is a well-established modern industrial estate comprising seventeen industrial units.

Tenure	To Let
Available Size	800 to 2,000 sq ft / 74.32 to 185.81 sq m
Rent	£650 - £1,500 per month Starting from
Business Rates	Upon Enquiry
EPC Rating	D (86)

### Key Points

- > Excellent location
- > Ample Parking
- > Close to A483 bypass

## Description

Bersham Enterprise Park is a well-established industrial estate comprising seventeen industrial units. Each unit has up and over sectional shutter doors with separate personnel access and some units have office accommodation within. The site also features ample on site car parking.

## Location

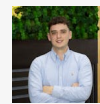
The business premises are situated off Plas Grono Road, Rhosyllen, Wrexham, very close to the A483 bypass and to Wrexham town centre.

## Accommodation

Description	sq ft	Rent	Service charge
F5	1,000	£780 /month	£83 /month
F13	800	£650 /month	£66 /month
F17	2,000	£1,500 /month	£166 /month



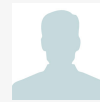
## Viewing & Further Information



**Richard Cross**

0161 220 1999 | 07706353590

Richard.Cross@hurstwoodholdings.com



**Constantine Thanopoulos**

0161 220 1999 | 07718884764

constantine.thanopoulos@hurstwoodholdings.com

