



BUILDING SURVEYS RENT REVIEWS LEASE RENEWALS VALUATIONS MANAGEMENT INVESTMENTS LETTINGS
LETTINGS ASSESSMENTS LEASE RENEWALS VALUATIONS MANAGEMENT INVESTMENTS BUILDING SURVEYS SALES

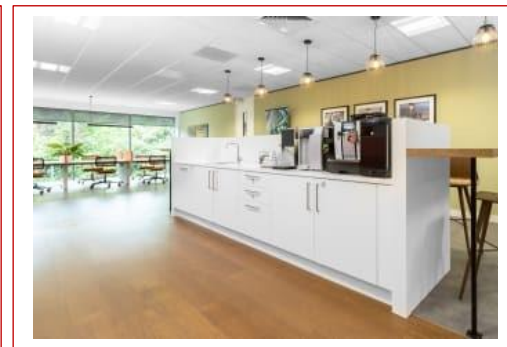
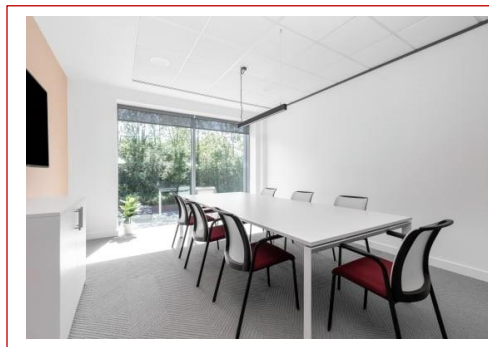
Commercial Property Consultants

Offices at High Wycombe and Marlow
For details of all available properties visit our website

PROPERTY PARTICULARS

Office and Co-Working Space in a Vibrant Commercial Setting

**Concorde Park
Norreys Drive
Maidenhead
Berkshire SL6 4BY**



TO LET

These particulars are believed to be correct, but their accuracy is in no way guaranteed, neither do they form any part of any contract. They are issued on the understanding that all negotiations are conducted, subject to contract, through Duncan Bailey Kennedy LLP. Finance Act 1989 – unless otherwise stated, our prices and rents are quoted exclusive of VAT. Any intending purchasers or lessees must satisfy themselves independently as to the incidence of VAT in respect of any transaction.

LOCATION - Leave the car at home as you head to work in Concorde Park, Maidenhead's premier business address. Situated just a short walk from the train station, you'll be among multinational corporations and local enterprises in this well-connected location.

Greet visitors in the impressive double height glass atrium, talk business over lunch on the terrace and catch up with colleagues in the relaxing, contemporary lounge. With central London less than 30 minutes away, client entertainment opportunities are endless.

DESCRIPTION – Concorde Park offers 67 private offices, 28 coworking desks, and 3 meeting rooms. What's there:-

- ❖ Edge of town location
- ❖ Close to major transport links
- ❖ Suspended ceilings
- ❖ Disabled facilities
- ❖ Meeting rooms
- ❖ Raised floors
- ❖ Lift

AMENITIES

- **Private fully-furnished office** for individuals or teams – customised to match your brand and create your own office suite with private amenities.
- **Day Offices** – Professional on-demand office space, available by the hour or day for teams of any size.
- **Office Membership** – Flexible access to Day Offices where and when you choose, at thousands of locations worldwide. Five, ten or unlimited days per month.
- **Coworking** – be part of a vibrant coworking community with **Dedicated Desk** (reserved permanent workspace), **Day Coworking** (rent a desk by the hour or day) or **Coworking Membership** (rent a desk for 5,10 or unlimited days each month) – thousands of locations – book your hot desk via the Regus app – network and collaborate.
- **Virtual Offices: Business Address** - build an instant presence wherever you need to be, at prime business locations in thousands of locations. **Virtual Office** – A prestigious business address with telephone answering, a virtual receptionist and access to a globe business lounge network. **Virtual Office Plus** offers everything in the Virtual Office package, plus access to meeting rooms and 5 days of office space each month.
- **Meeting Rooms** – Professional rooms for your next training session, interview or pitch, wherever you need it – a wide range of different sized meeting rooms – presentation equipment available.

TERMS - Contract terms are flexible and tailored to your specific needs.

RENT – Office Space from £215 per person per month / Coworking from £205 per person per month / Virtual Offices from £115 per month / Meeting Rooms from £25 per hour.

ENERGY PERFORMANCE RATING - The EPC rating for this property is to be confirmed.

VIEWING – For further information or to arrange a viewing, please contact:-

Duncan Bailey Kennedy
FAO: Jane Hathaway / Adrian Dolan
Telephone: 01494 450951
Email: janeh@dbk.co.uk / adriand@dbk.co.uk

