

TO LET

Open Storage Land at Norman Road, Deptford, London, SE10 9QZ



0.54 Acres (2,185 SQ M)

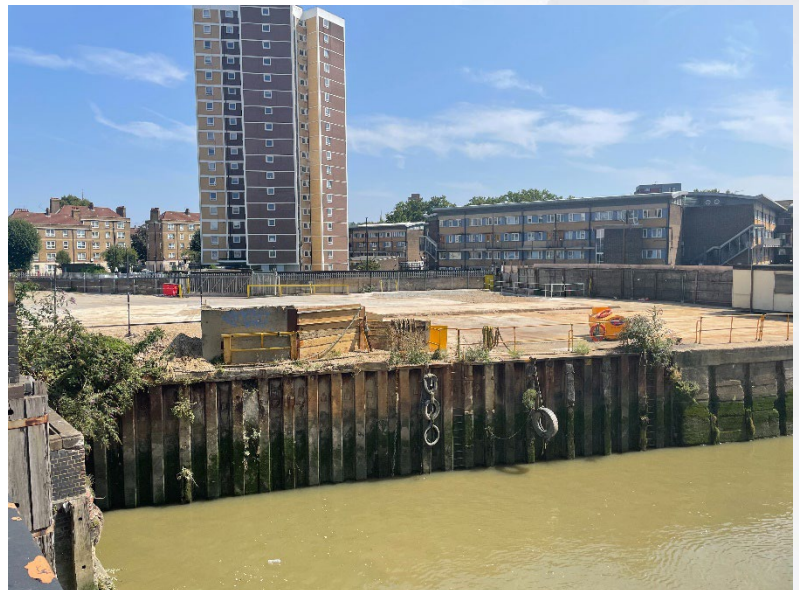
Immediately Available

KEY HIGHLIGHTS

- 0.54 Acres of open storage land
- Fully fenced & secure plot
- Site comprises a mix of concrete hardstanding and compacted gravel surfacing
- Direct access to Creek Road (A200) and Norman Road
- Direct dock access to the Deptford Creek Wharf
- Excellent public transport links with Greenwich DLR station a 6-minute walk away

ACCOMMODATION

	Acres	SQ M (Approx. GEA)	Sq Ft (Approx. GEA)
TOTAL	0.54	2,185	23,519

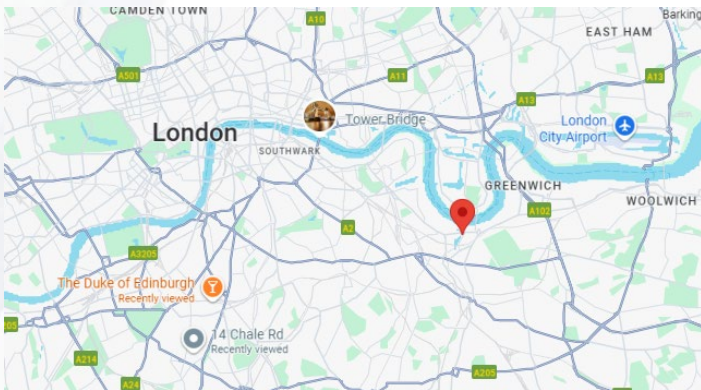


For more information please contact:
THOMAS ERXLEBEN
 Cushman & Wakefield
 Mobile: +44 (0) 7710 966 234
 Email: Tom.Erxleben@cushwake.com

ALEX DOYLE
 Cushman & Wakefield
 Mobile: +44 (0) 7826 537141
 Email: Alexander.Doyle@cushwake.com

DESCRIPTION

The site comprises 0.54 acres of Open Storage land, securely fenced and surfaced with a combination of concrete hardstanding and compacted gravel. The site is level and well positioned for last mile operations across South East London. The Plot also offers direct dock access to the Thames network. The site enjoys strong public transport links with the nearest tube station a 6-minute walk.



Source: Google Maps

LOCATION

The site is located at Brewery Wharf, Norman Road, Deptford within the London Borough of Greenwich. Positioned just off the A200 (Creek Road), it offers excellent road connectivity to the A2 and A20, providing direct routes to Central London, the South Circular, and Greater London.

Public transport links are strong, with Greenwich DLR and National Rail Stations just a 6-minute walk away, offering fast and frequent services to Canary Wharf, Bank, London Bridge, and beyond. Multiple bus routes operate along Creek Road and Norman Road, connecting the site to Lewisham, Surrey Quays, and Central London.

The site benefits from direct dock access to Deptford Creek which is a 300m distance from the River Thames.



TRANSPORT	DISTANCE
Greenwich DLR Station	0.3 miles
Deptford Station	0.5 miles
A200 (Creek Road)	Immediate access
A2	2.5 miles
A20	3.2 miles
Canary Wharf	3.5 miles (via DLR)
Central London (Bank)	5.5 miles (via DLR)

RATEABLE VALUE

The Rateable value assigned to the premises by the VOA from 1 April 2023 is £75,500.

FURTHER INFORMATION & VIEWINGS

Further information is available through the sole agents at Cushman & Wakefield.

TERMS

Available by way of a new FRI lease.

LEGAL COSTS

Each party responsible for their own legal costs.

For more information please contact:

THOMAS ERXLBEN

Cushman & Wakefield

Mobile: +44 (0) 7710 966 234

Email: Tom.Erxleben@cushwake.com

ALEX DOYLE

Cushman & Wakefield

Mobile: +44 (0) 7826 537141

Email: Alexander.Doyle@cushwake.com

The Misrepresentation Act 1967.

Cushman & Wakefield (and any joint agent appointed) for themselves and for vendors or lessors of this property, whose agents they are, gives notice that: 1 The particulars are produced in good faith, but are a general guide only and do not constitute any part of a contract. 2 No person in the employment of the agent(s) has any authority to make or give any representation or warranty whatsoever in relation to this property. 3 The property is offered subject to contract and unless otherwise stated all rents are quoted exclusive of VAT. 4 Nothing in these particulars should be deemed a statement that the property is in good condition, or that any services or facilities are in working order. 5 Unless otherwise stated, no investigations have been made regarding pollution, or potential land, air or water contamination. Interested parties are advised to carry out their own investigations if required. September 2025