

CANNON GREEN EC4

AVAILABLE NOW

Newly refurbished office + shared space

Top transport links right on your doorstep



2,700–20,500 sq ft
of high quality
fitted office space

AT A GLANCE.

BUILDING AMENITY OVERVIEW



1. Terrace
2. Bookable meeting rooms
3. Pavilion lounge
4. Restaurant / café on-site
5. Gym on-site



CANNON STREET | MINUTES' WALK AWAY



AVAILABILITY

FLOOR	SIZE (SQ FT)	DESKS	SPEC
Part 6th	4,732	42	Fitted
4th	9,021 (can be split)	-	Cat A
Part 3rd	4,106	42	Fitted
Part 2nd	2,713	24	Fitted
Total	20,491		



NEWLY REFURBISHED RECEPTION



COMMUNAL ROOF TERRACE

CITY PAVILION

A DAY IN THE LIFE.

From a morning coffee at The Listing to a lunchtime stroll, picking between the many eateries, and an evening spin at Buzz Gym, Cannon Green keeps your day flowing. Thoughtfully designed workspaces and easy access to local spots make the everyday feel effortless. Cannon Green offers more than just workspace. It's a base for a better working day.



8AM

Grab a coffee downstairs at The Listing

10:30AM

Team catch up in the communal meeting space



12:30PM

Walk 3 mins to Bloomberg Arcade for lunch



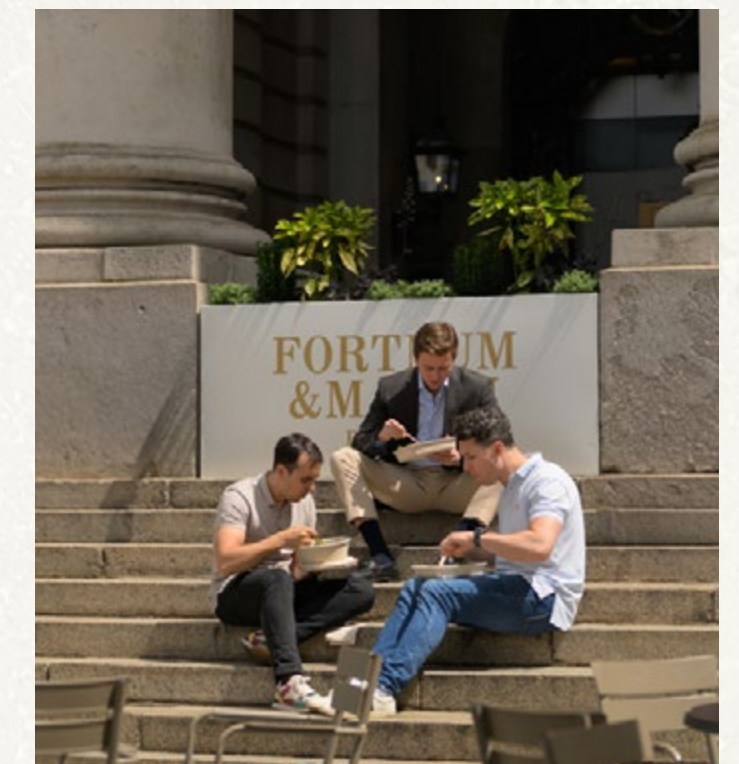
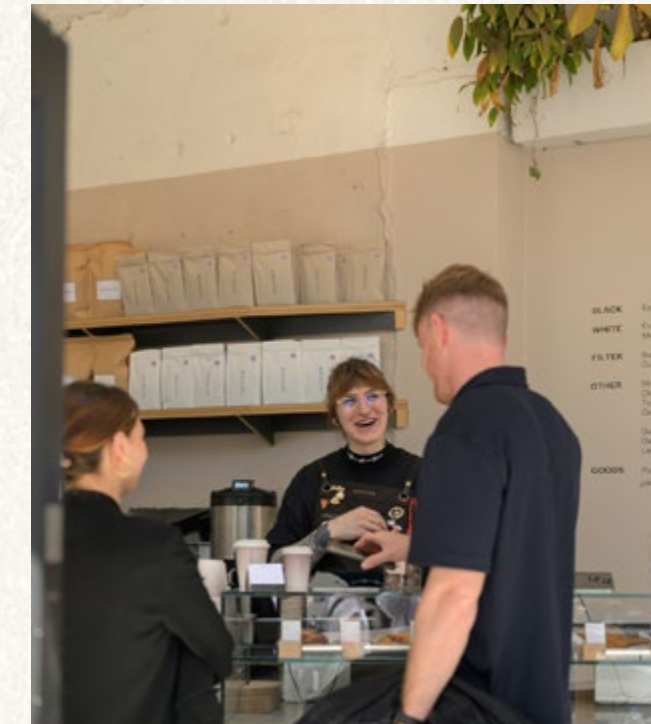
3PM

Take a meeting on the stunning roof terrace



6PM

Spin class at Buzz Gym (downstairs)



LOCATION OVERVIEW.

Cannon Street offers the perfect location for office tenants seeking a prestigious business address in the heart of the City of London.

With immediate access to Cannon Street Station and close proximity to Bank, Monument, and Mansion House, the area boasts exceptional transport links across the Underground and National Rail.

Tenants benefit from a wide array of nearby amenities, including high-quality dining options such as The Ned, The Wolseley, and Côte Brasserie, as well as a range of coffee shops and gyms like Third Space and Barry's. Set amidst London's financial core, Cannon Street places your business at the centre of commerce and connectivity, surrounded by industry leaders and an ever-evolving professional network.

RIGHT ON YOUR DOORSTEP.



OCCUPIERS

1. Mastercard
2. Deliveroo
3. Bloomberg
4. Nomura
5. Wells Fargo
6. Rothschild & Co
7. Fieldfisher
8. CMS London
9. Accenture
10. Allianz
11. Gallagher

BARS & RESTAURANTS

- Brigadiers
- Wolseley City
- St Swithins Wine shippers
- Baby Bacchus
- Oyster Shed
- The Listing
- The Ned

WELLBEING

- Buzz Gym (in the building)
- Virgin Active
- The Foundry
- Gymbox
- Nuffield Health

CONNECTIVITY

- CANNON STREET 1 MIN
- BANK 4 MINS
- LONDON BRIDGE 10 MINS



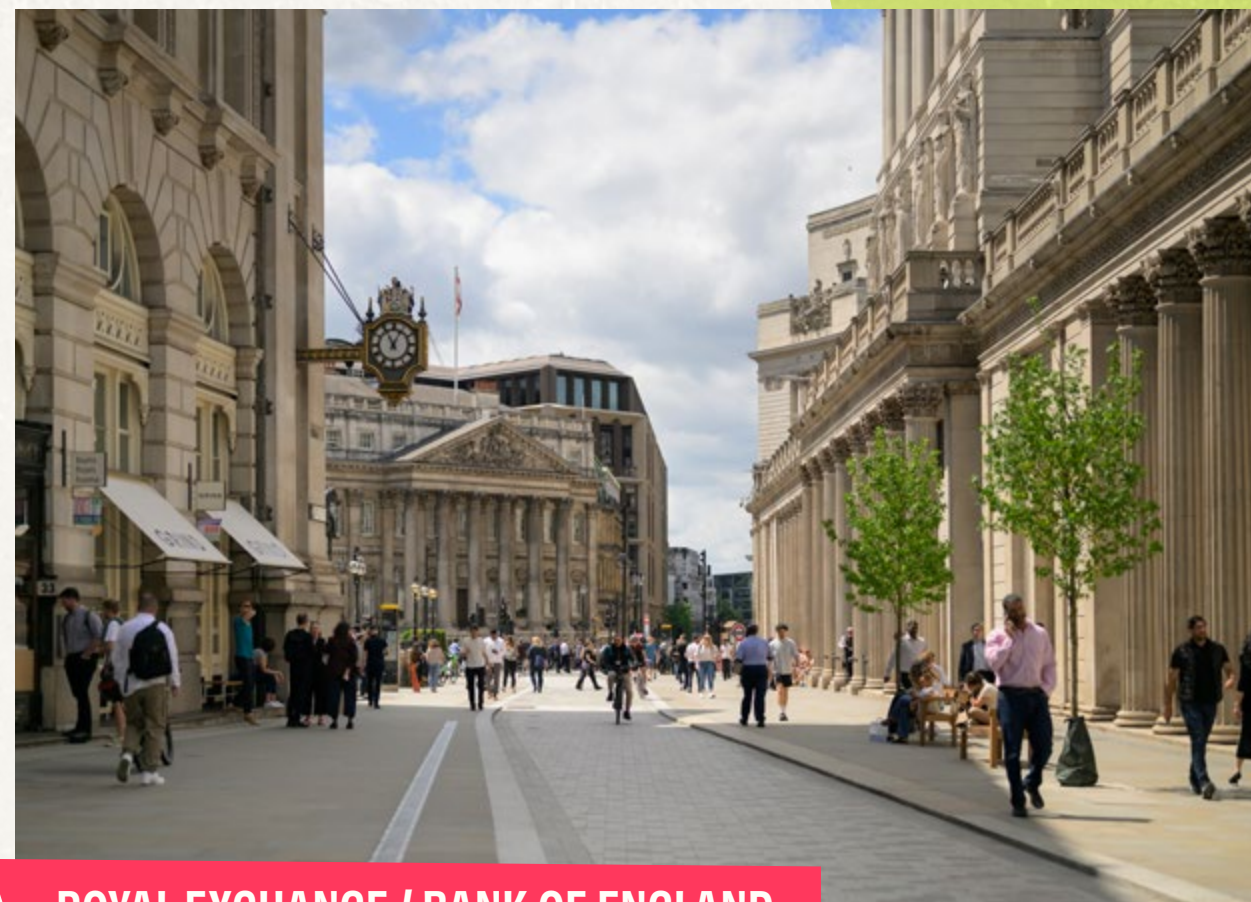
BABY BACCHUS

THE OYSTER SHED



ROSSLYN COFFEE

DISCOVER A NEW SIDE OF THE CITY.



ROYAL EXCHANGE / BANK OF ENGLAND



BOROUGH MARKET

THE NED



INTO THE SPECIFICS.



UP TO 2.8M

Floor to ceiling heights

1.5M

Planning grid

1 PERSON

per 8 sq m base occupancy

WCS

on all floors

EPC B

Rated

5 PASSENGER LIFTS

(2x 13 person lifts and 1x 8 person lift in the River Wing, 2x 10 person lifts in the City Wing)

NEWLY REFURBISHED

Double-height reception

FLEXIBLE FLOORPLATES

with excellent natural light



ENHANCED AMENITY

offering including roof terrace, restaurant, bike club, showers and changing rooms, business lounge, co-working and gym



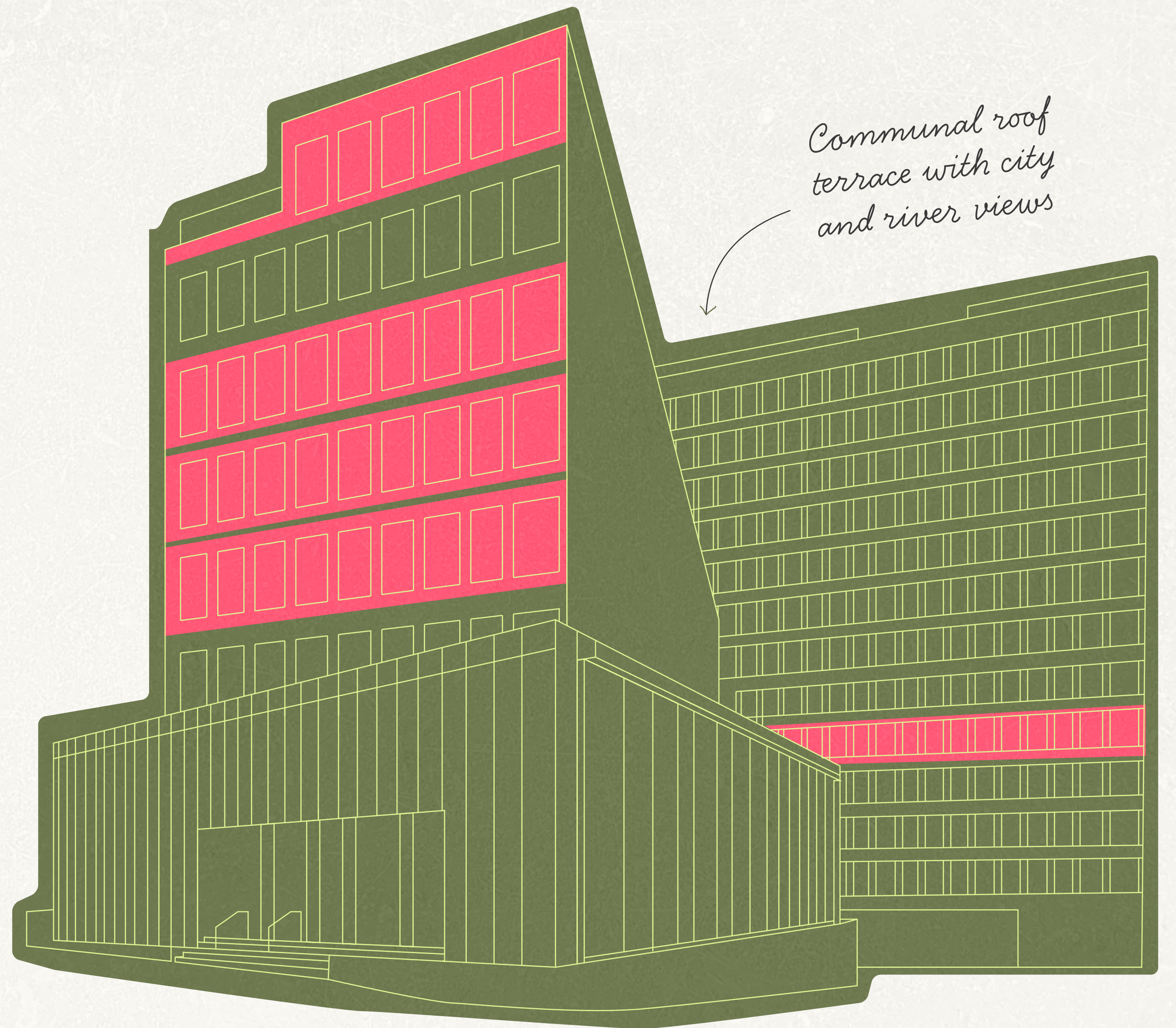
LED

LG7 lighting



SCHEDULE OF AREAS.

FLOOR	SIZE (SQ FT)	SPECIFICATION	STATUS
Part 6th	4,732	Fitted	Available
4th	9,021 (can be split)	Cat A	Available
Part 3rd	4,106	Fitted	Available
Part 2nd	2,713	Fitted	Available
Total	20,491		

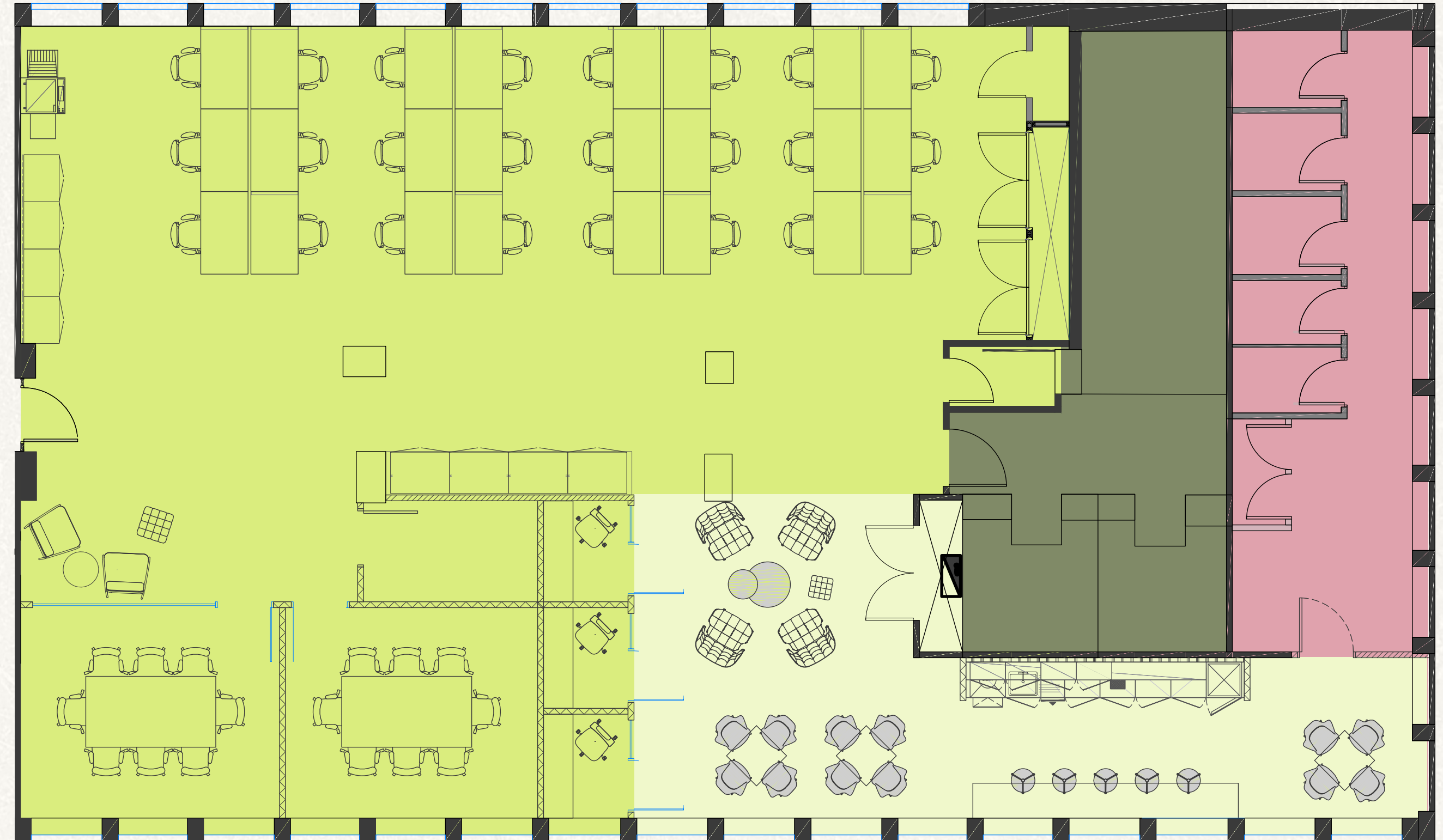


PART 2ND FLOOR

KEY ■ Office ■ Kitchen/breakout ■ Core ■ Shared lobby ■ WC ↑
N

FITTED

Desks	24
8-person meeting rooms	2
1-person phone booths	3
Tea point	1



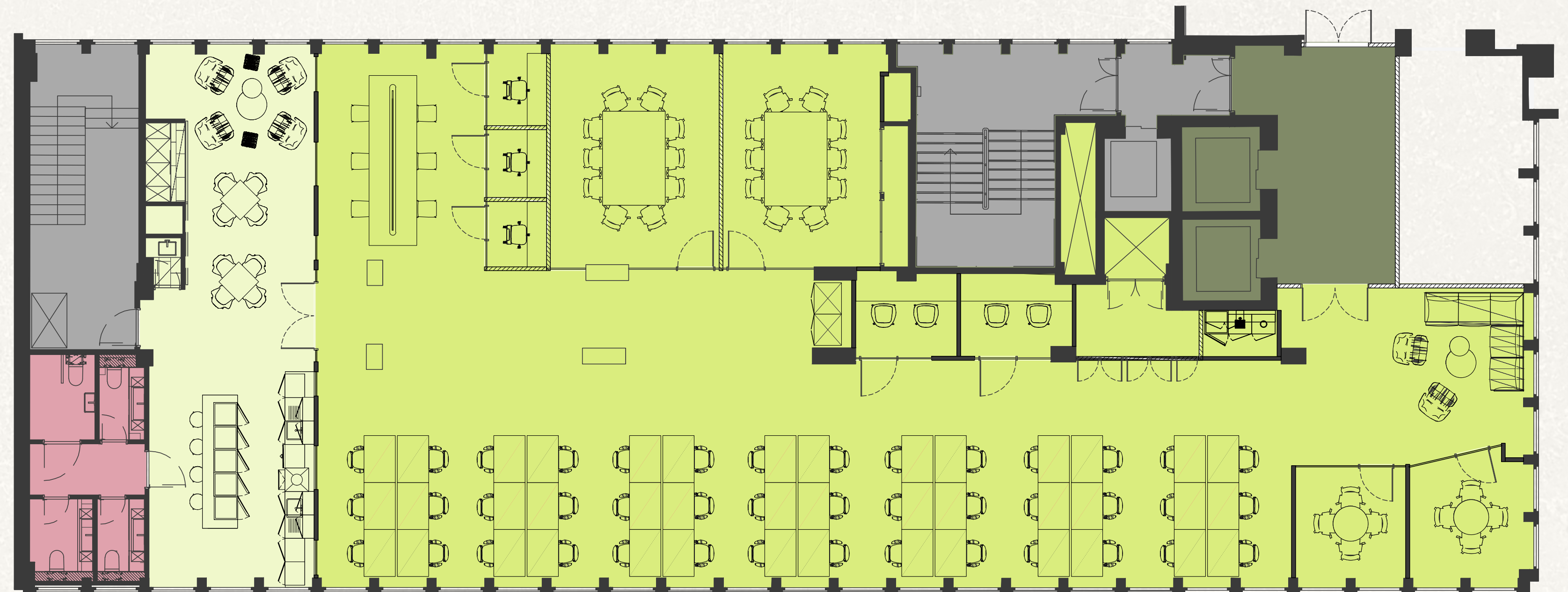
2,713 SQ FT
252 SQ M

PART 3RD FLOOR

KEY ■ Office ■ Kitchen/breakout ■ Core ■ Shared lobby ■ WC ↑
N

FITTED

Arrival Lounge	1
Desks	42
1-person phone booths	3
2-person phone booths	2
4-person meeting room	2
10-person meeting room	2
Collaboration zones	2
Teapoint	1



4,106 SQ FT
381 SQ M

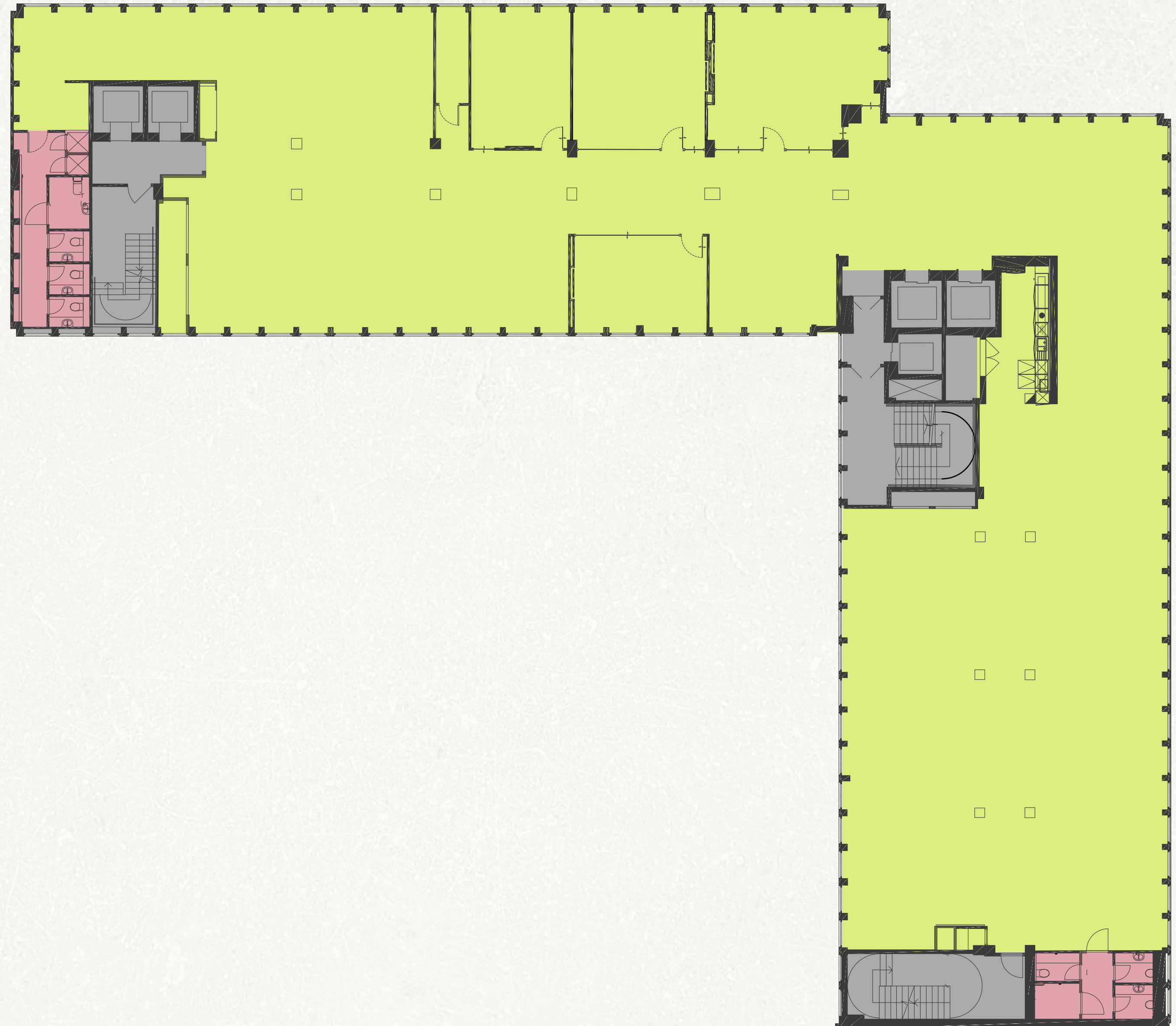
4TH FLOOR

CAT A (CAN BE DELIVERED FITTED)

9,021 SQ FT
838 SQ M

FLOOR CAN BE SPLIT INTO TWO DEMISES

KEY Office Core WC

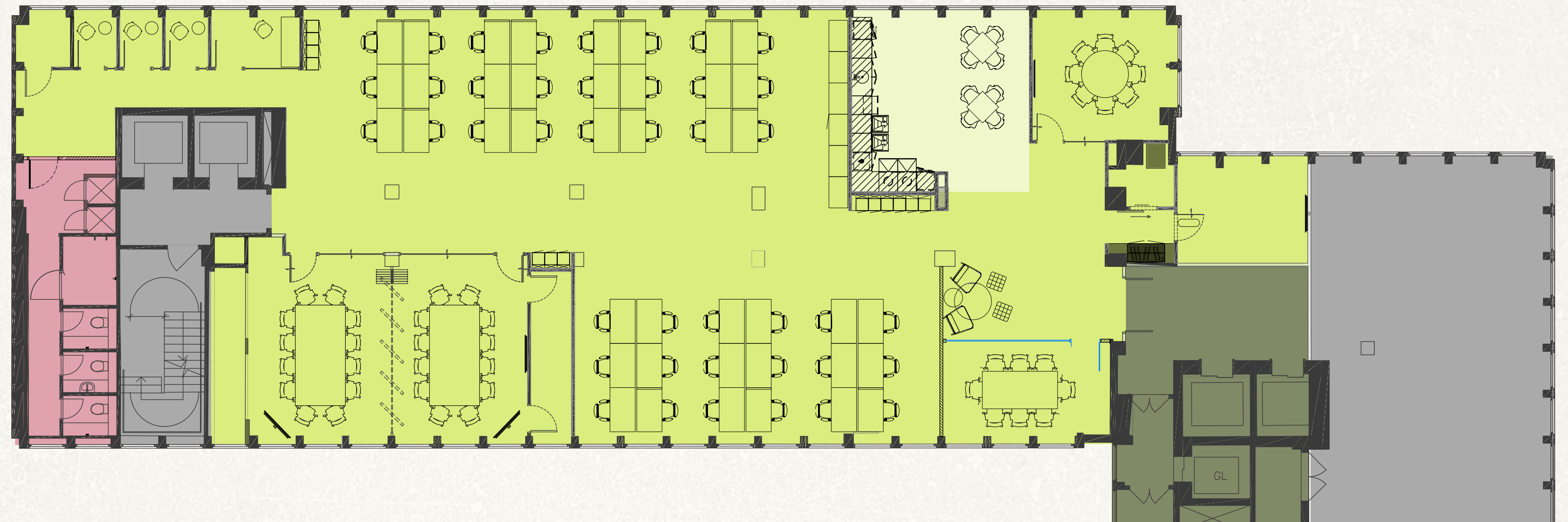


PART 6TH FLOOR

KEY ■ Office ■ Kitchen/breakout ■ Core ■ Shared lobby ■ WC ↑
N

FITTED

Desks	42
6-person meeting room	1
8-person meeting room	2
12-person meeting room	2
1-person phone booths	4
Tea point	1



4,732 SQ FT
440 SQ M

FITTED FLOORS.

The fitted floors have been thoughtfully designed, including contemporary workstations, private meeting rooms and modern breakout areas, with a fully equipped kitchen.

Contemporary finishes



Third floor kitchen



Third floor office space

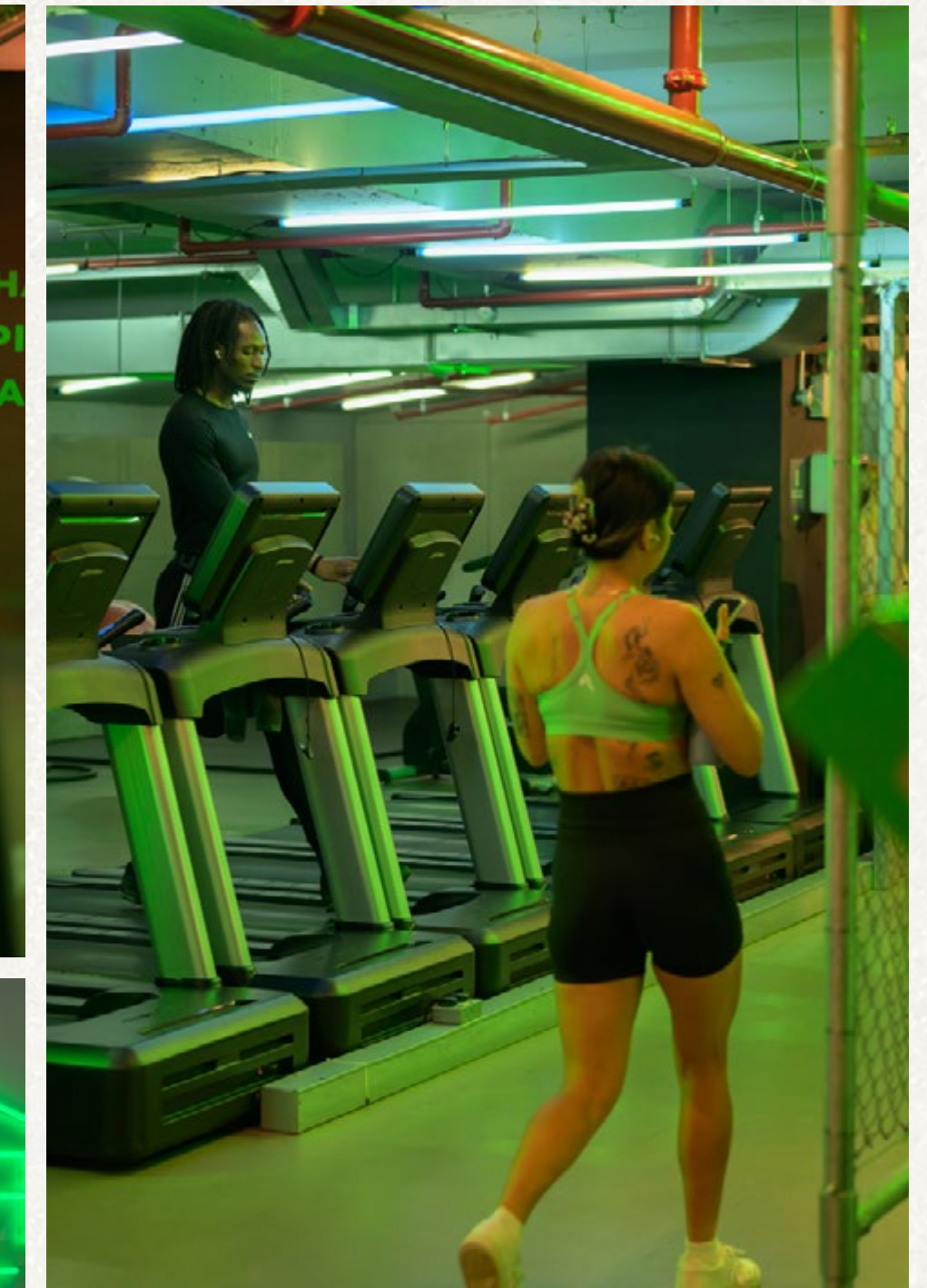


Third floor lobby



Third floor lift lobby

Entrances off the lift lobby provide a private and secure entrance



130
Bike racks

12
Showers

85
Lockers



*Fully-equipped
Buzz Gym within
the building*

END OF TRIP FACILITIES.

Cannon Green benefits from having an on-site gym which offers preferential rates for tenants in the building. For those who cycle or run to the office, there are private showers, secure lockers, and ample cycle storage facilities – supporting a healthier, more active commute and encouraging a balanced lifestyle for all occupants.

WONDERING IF THE GRASS IS GREENER? GET IN TOUCH.

**CANNON
GREEN** EC4



TOM BREMNER

+44 (0) 7715 200 972
tom.bremner@cushwake.com

ALFIE JOHN

+44 (0) 7377 885 814
alfie.john@rx.london

ALEX NOVELLI

+44 (0) 77860 594 752
alex.novelli@cushwake.com

DAN BURN

+44 (0) 7515 607 011
dan.burn@rx.london

ROSIE CONYERS

+44 (0) 7741 094 982
rosie.conyers@cushwake.com

Important Notice: Cushman & Wakefield and RX London, their clients and any joint agents give notice that: 1. They are not authorised to make or give any representations or warranties in relation to the property either here or elsewhere, either on their own behalf or on behalf of their client or otherwise. They assume no responsibility for any statement that may be made in these particulars. These particulars do not form part of any offer or contract and must not be relied upon as statements or representations of fact. 2. Any areas, measurements or distances are approximate. The text, photographs and plans are for guidance only and are not necessarily comprehensive. It should not be assumed that the property has all necessary planning, building regulation or other consents and that Cushman & Wakefield and RX London have tested any services, equipment or facilities. Purchasers must satisfy themselves by inspection or otherwise.

October 2025. | Designed by studio185.london

