



CITY OF LONDON

ADELAIDE HOUSE

LONDON BRIDGE

87,000 SQ FT OF LANDMARK RIVERSIDE OFFICES WITH SPECTACULAR VIEWS.



Indicative view of the communal roof terrace

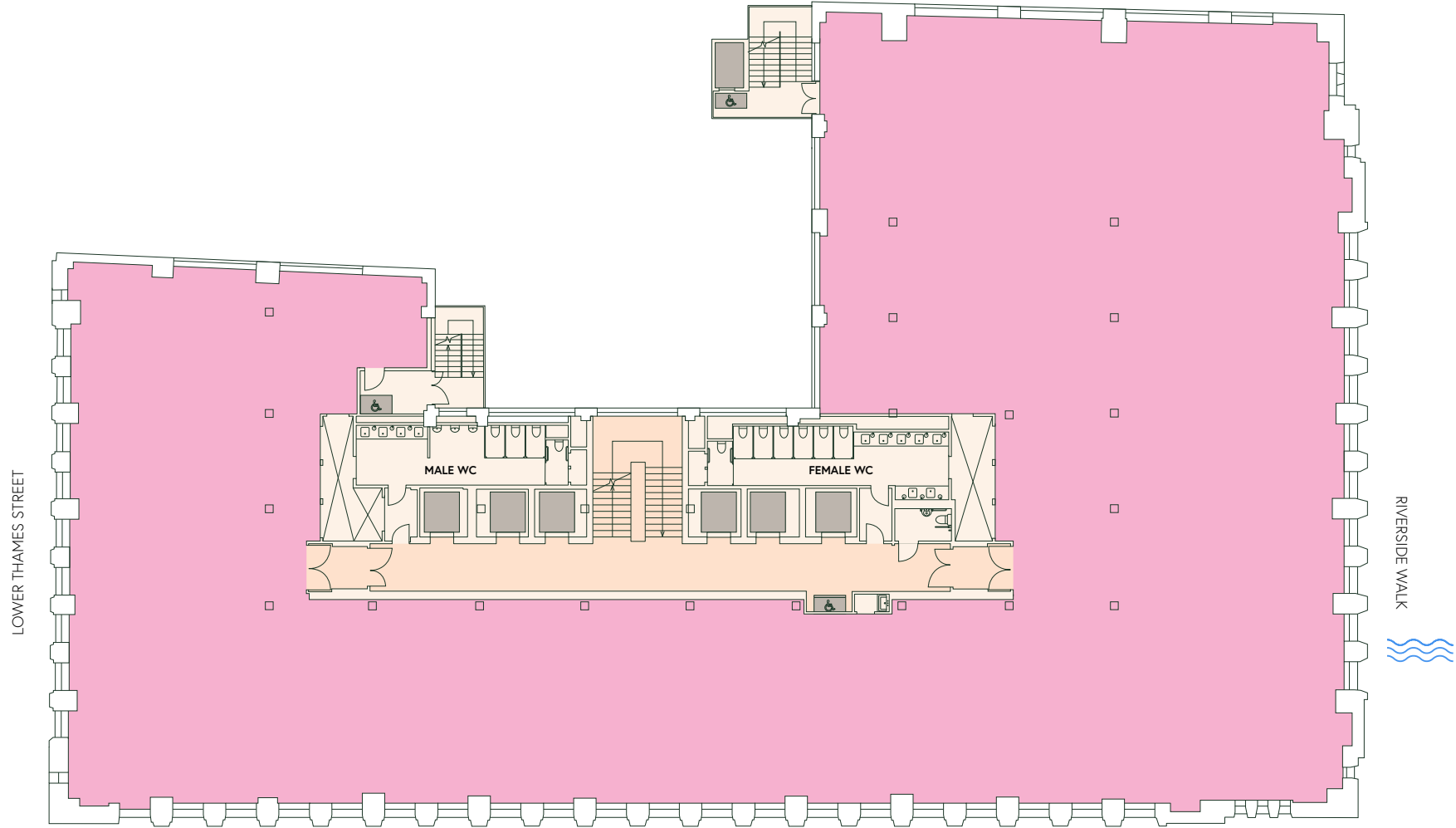


Typical Floor

Office

13,000 SQ FT

1,208.0 SQ M



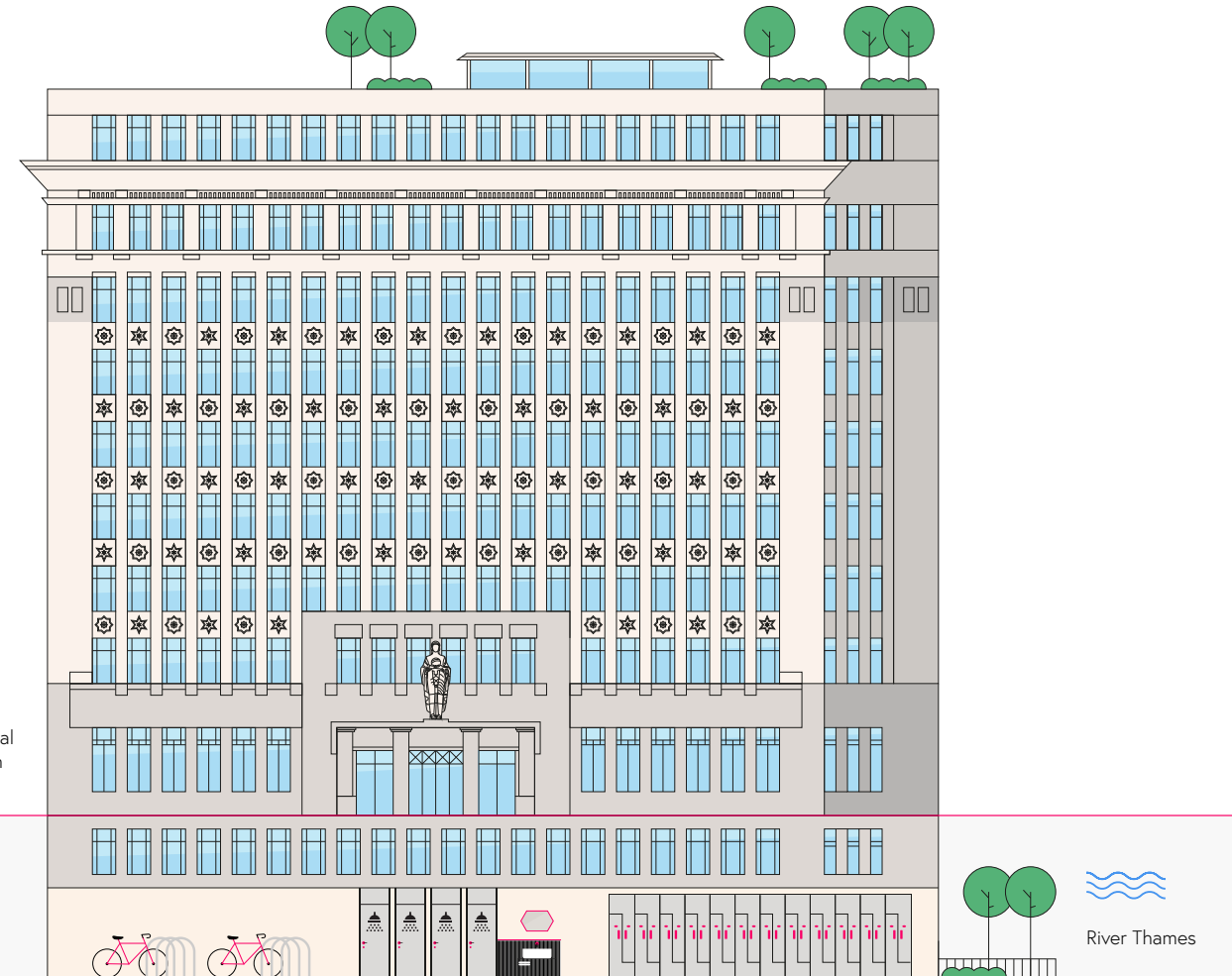
- Office
- Core
- Lobby

*All areas are approximate.

Schedule of Areas

LEVEL	USE	AREA (SQ FT)
9	Terrace	4,526
	Pavilion	1,045
8	LET	
7	LET	
6	LET	
5	Office	13,083
4	Office	13,005
3	Office	13,167
2	Office	13,225
1	Office	13,403
BRIDGE	Office	7,959
	Business Lounge	2,549
	Reception	764
RIVER	Office	13,284
GARDEN	Private Garden	2,083
TOTAL OFFICE		87,126

All areas are approximate.



Main Arrival on London Bridge

River Thames

Building Highlights



Major rebuild with all new services.



29 Showers, 330 lockers & 330 cycle spaces



Ground floor business lounge



New level 9 communal terrace overlooking the river & river level garden



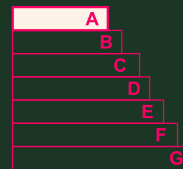
New openable windows



Occupational density of 1:8 sq m



Targeting BREEAM Excellent



Targeting EPC Rating A

AdelaideHouse.London

Important notice relating to the Misrepresentation Act 1967 and the Property Misdescriptions Act 1991: (i) the particulars are set out as a general outline only for guidance of intending purchasers or lessees and do not constitute, nor constitute part of, an offer or contract (ii) all descriptions, dimensions, references to condition and necessary permission for use and occupation, and other details are given in good faith and are believed to be correct, but any intending purchasers or occupiers should not rely on them as statements or representations of fact, but must satisfy themselves by inspection or otherwise as to the correctness of each of them. Q1 2026.

