

170 Vauxhall Bridge Road, Victoria, SW1

Medical Rooms Available



Accommodation

Location

A beautifully refurbished medical space, situated on Vauxhall Bridge Road, between Victoria Station and Pimlico Station.
A prominent corner unit with frontage on Vauxhall Bridge Road and Rochester Row.

Summary

Fully fitted self contained lower ground floor comprising of 5 consulting rooms, serviced by a lift.

Reception and waiting area located on ground floor. Dedicated waiting area on lower ground floor.

Transport

Conveniently located between Victoria station and Pimlico.

Rent

Upon application

Lease

Available on long term sublease or on ad hoc basis



Floorplans

Room 1

137 sq. ft. - 12.7m²

Room 2

135 sq. ft. - 12.5m²

Room 3

167 sq. ft. - 15.5m²

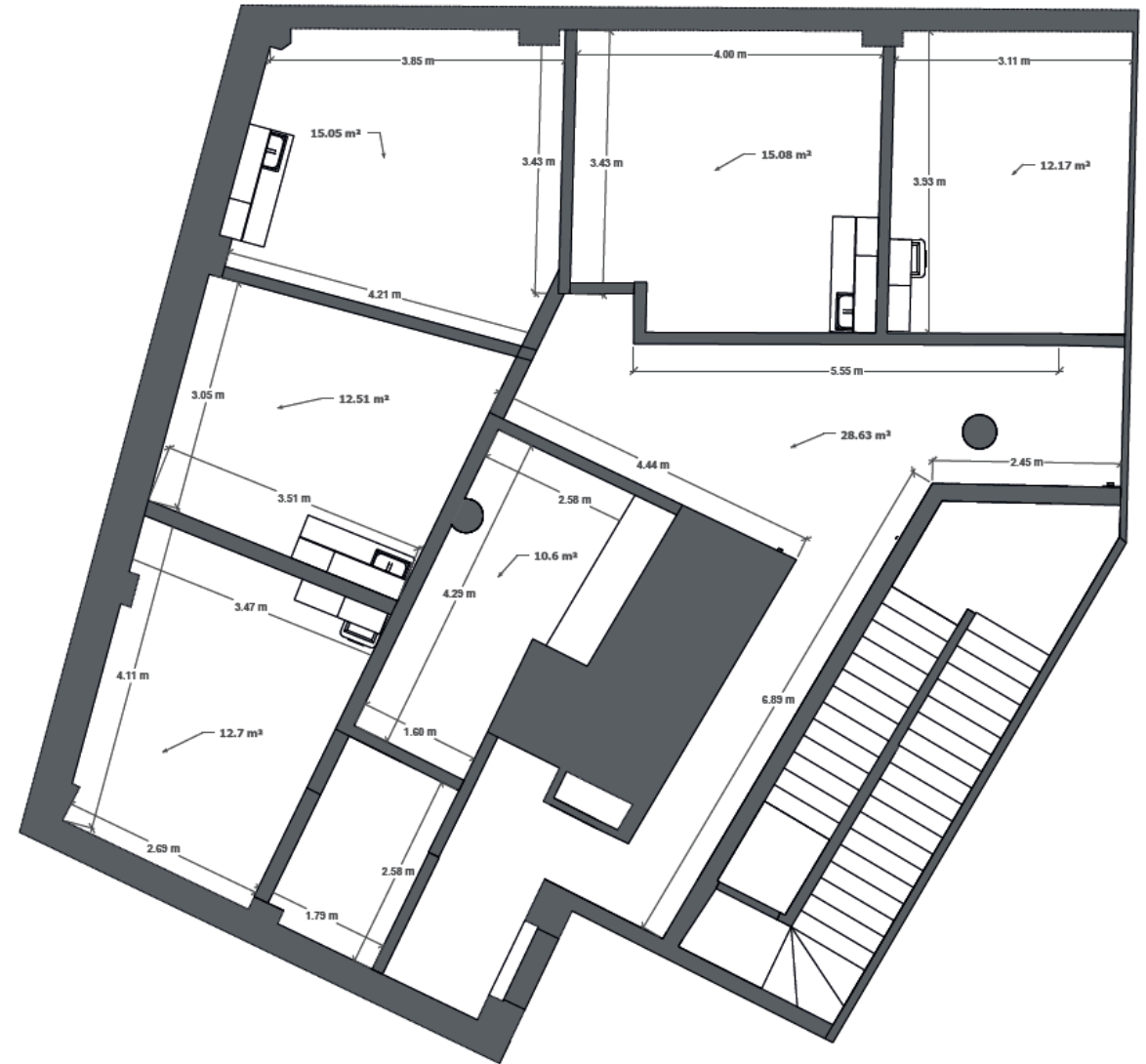
Room 4

161 sq. ft. - 15m²

Room 5

129 sq. ft. - 12m²

All rooms are suitable for most medical uses, consultations and treatments. Fitted with sinks, medical flooring and adequate lighting. Furnished with desk, chair and examination table or bed. There is a staff kitchen and DDA WC on the floor.



Contact us

Evi Georgadidis
07990 564 747
evi.georgadidis@cushwake.com

Jake Lipschitz
07393267713
Jake.Lipschitz@cushwake.com

Location

