



136 HARLEY STREET

CONSULTING ROOM

&

OPERATING THEATRE





Location

A beautifully refurbished medical building, situated in the heart of the Harley Street Medical District.

Summary

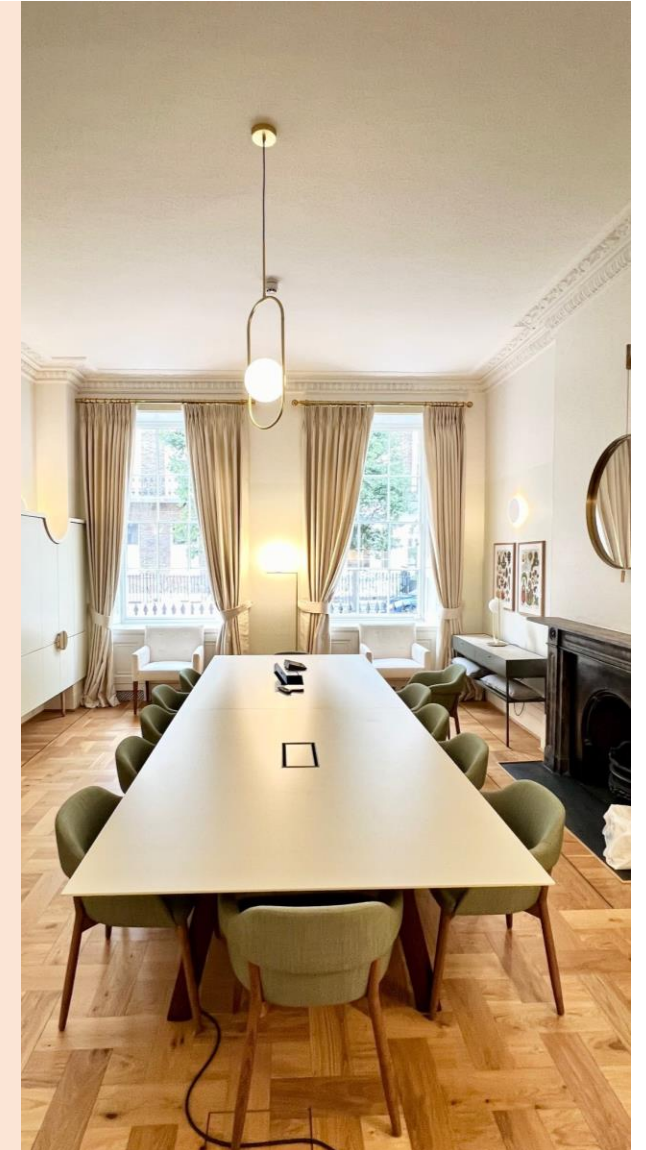
Fully fitted ground floor consulting room 430 sq. ft. (40m2)
New fully fitted operating theatre with 3 recovery bays totaling 635 sq. ft. (50m2)
Reception and waiting area located on ground floor

Transport

Conveniently located closely to Oxford Circus, Bond Street, Regent's Park, Great Portland Street, Baker Street and Marylebone stations.

Rent

Upon application





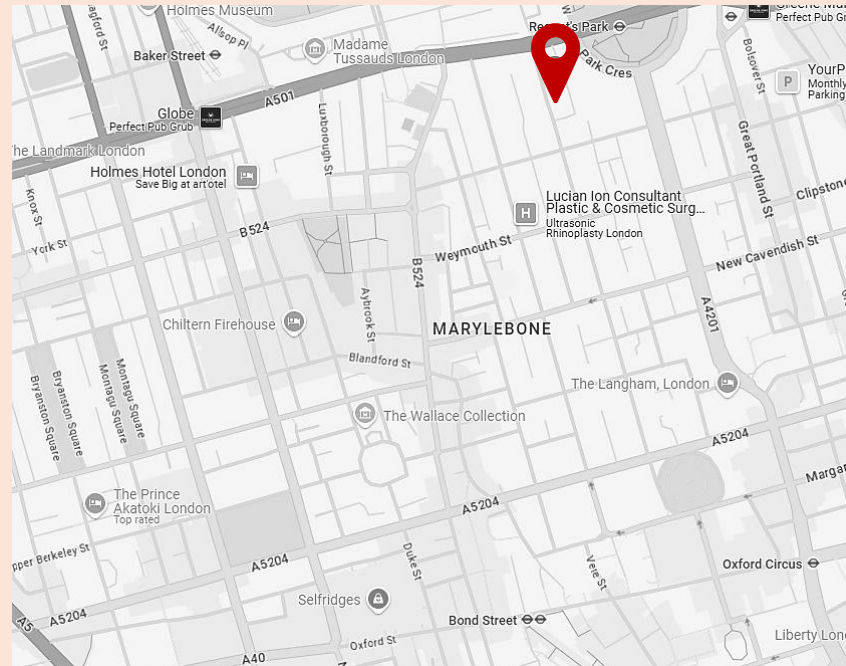
Floorplans

Ground Floor



Lower Ground





Contact

Evi Georgadidis
07990 564 747
evi.georgadidis@cushwake.com



DISCLAIMER: All areas are approximate, measured in according with RICS Code of measuring practice 6th edition. The building may present anomalies in relation to survey/drawn plans. This information must not be relied upon to form the basis of any offer or contract. Cushman & Wakefield on their behalf and for the Vendors or Lessors of this property whose Agents they are, give notice that: 1. These particulars are set out as a general outline only for guidance to intending Purchasers or Lessees, and do not constitute any part of an offer or contract. 2. Details are given without any responsibility and any intending Purchasers, Lessees or Third Parties should not rely on them as statements or representations of fact, but must satisfy themselves by inspection or otherwise as to the correctness of each of them. 3. No person in the employment of Cushman & Wakefield has any authority to make any representation or warranty whatsoever in relation to this property. Subject to contract. January 2025