

PART OF **WREXHAM**  
**INVESTMENT ZONE**

Next Level Logistics by



**WREXHAM1M**

Wrexham Industrial Estate > Wrexham > **LL13 9UT**

**DESIGN & BUILD** HIGH-QUALITY LOGISTICS, DISTRIBUTION  
& MANUFACTURING FACILITY UP TO **1,000,000 SQ FT**

**wrexham1m.co.uk**

lashed.splashes.splash

# INDUSTRIAL AND MANUFACTURING SPACE AT SCALE

**NEW 60-ACRE STRATEGIC LOGISTICS & MANUFACTURING SITE PROVIDING UP TO 1,000,000 SQ FT OF BESPOKE B2/B8 ACCOMMODATION**

## WREXHAM<sup>TM</sup>



**£11.2M NATIONAL  
INSURANCE  
CONTRIBUTIONS**



**£15M  
BUSINESS  
RATES RELIEF**



**£800K STAMP  
DUTY LAND TAX  
EXEMPTION**



**ENHANCED CAPITAL  
ALLOWANCE  
BENEFITS**

\*Based on 1,000,000 SQ FT over 5 years

# INVESTMENT ZONE

We're proud to have played a key role in Wrexham's transformation over the last 20 years

## WREXHAM, A HUB FOR INNOVATION AND GROWTH

From a bold vision to a thriving centre of innovation, Wrexham has attracted global companies like JCB and Kellogg's, becoming a hub for growth and collaboration.

This success is driven by a powerful partnership between public and private sectors, working together to support the growth of both SMEs and international businesses.



### A £160M OPPORTUNITY FOR ADVANCED MANUFACTURING

The £160m Advanced Manufacturing Investment Zone, led by local councils and the Welsh and UK governments, will create a world-class manufacturing cluster in Wrexham. Our developments at Wrexham Industrial Estate – Wrexham 1M, Wrexham 152, and Bridgeway Centre – are central to this exciting initiative.



### DRIVING ECONOMIC GROWTH & JOBS

Since 2006, FI Real Estate Management has committed over £136m to Wrexham's industrial space, with plans to expand to over 3 million sq ft, creating an estimated £12 billion in value over the next 10 years.

The Investment Zone will generate 6,000 new jobs and attract £1bn of investment, with infrastructure improvements benefiting all tenants and supporting local talent development.



### FINANCIAL INCENTIVES TO SUPPORT GROWTH

Tenants at Wrexham Industrial Estate will benefit from business rates relief and Full Stamp Duty Land Tax relief. For example, Wrexham 1M could save tenants over £20m over the next 10 years, accelerating business growth.

With these incentives, Wrexham is poised to become a leading advanced manufacturing hub, drawing international investment and creating a globally significant cluster in North-East Wales.



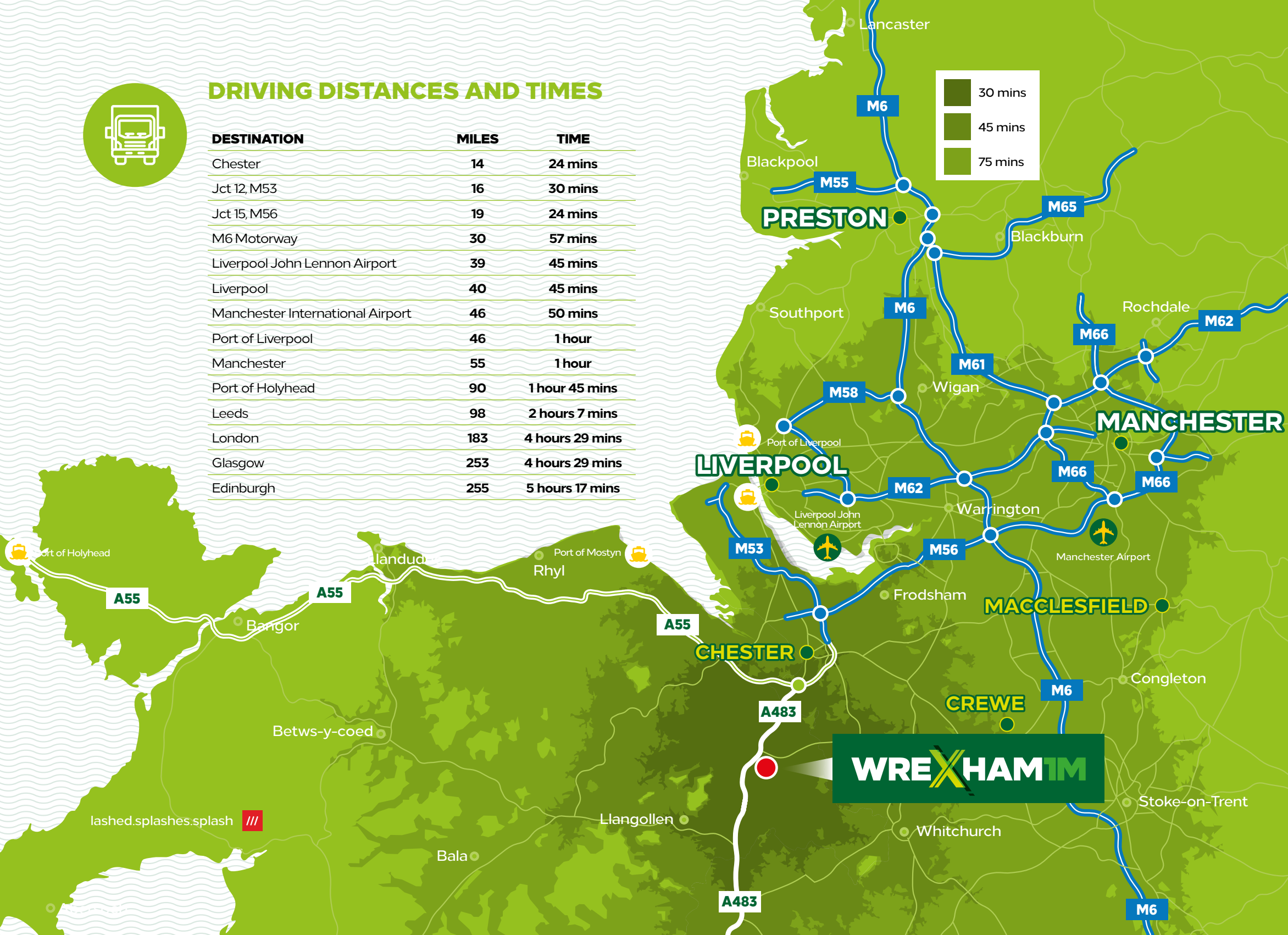
### A COLLABORATIVE FUTURE

We're excited to continue working with local authorities and communities to ensure Wrexham's growth benefits all. These investments will drive the regional economy, creating opportunities for businesses and people alike.



## DRIVING DISTANCES AND TIMES

DESTINATION	MILES	TIME
Chester	14	24 mins
Jct 12, M53	16	30 mins
Jct 15, M56	19	24 mins
M6 Motorway	30	57 mins
Liverpool John Lennon Airport	39	45 mins
Liverpool	40	45 mins
Manchester International Airport	46	50 mins
Port of Liverpool	46	1 hour
Manchester	55	1 hour
Port of Holyhead	90	1 hour 45 mins
Leeds	98	2 hours 7 mins
London	183	4 hours 29 mins
Glasgow	253	4 hours 29 mins
Edinburgh	255	5 hours 17 mins



# EXCEPTIONAL LOCATION



**WREXHAM INDUSTRIAL ESTATE**  
**550** + **10,000** +  
**HECTARES** **EMPLOYEES**  
**340** +  
**BUSINESSES**

**LOCAL WORKFORCE**  
**12,000** | **2,000** | **2,500**  
**IN MANUFACTURING** | **IN DISTRIBUTION** | **READY TO WORK**

**475K PEOPLE WITHIN 30 MINS** .....  
..... **4.8M PEOPLE WITHIN 60 MINS**

Based on Census 2021



**M53  
MOTORWAY**  
16 MILES



**M56  
MOTORWAY**  
19 MILES



**PORT OF  
LIVERPOOL**  
46 MILES



**PORT OF  
HOLYHEAD**  
90 MILES



**LIVERPOOL JOHN  
LENNON AIRPORT**  
39 MILES



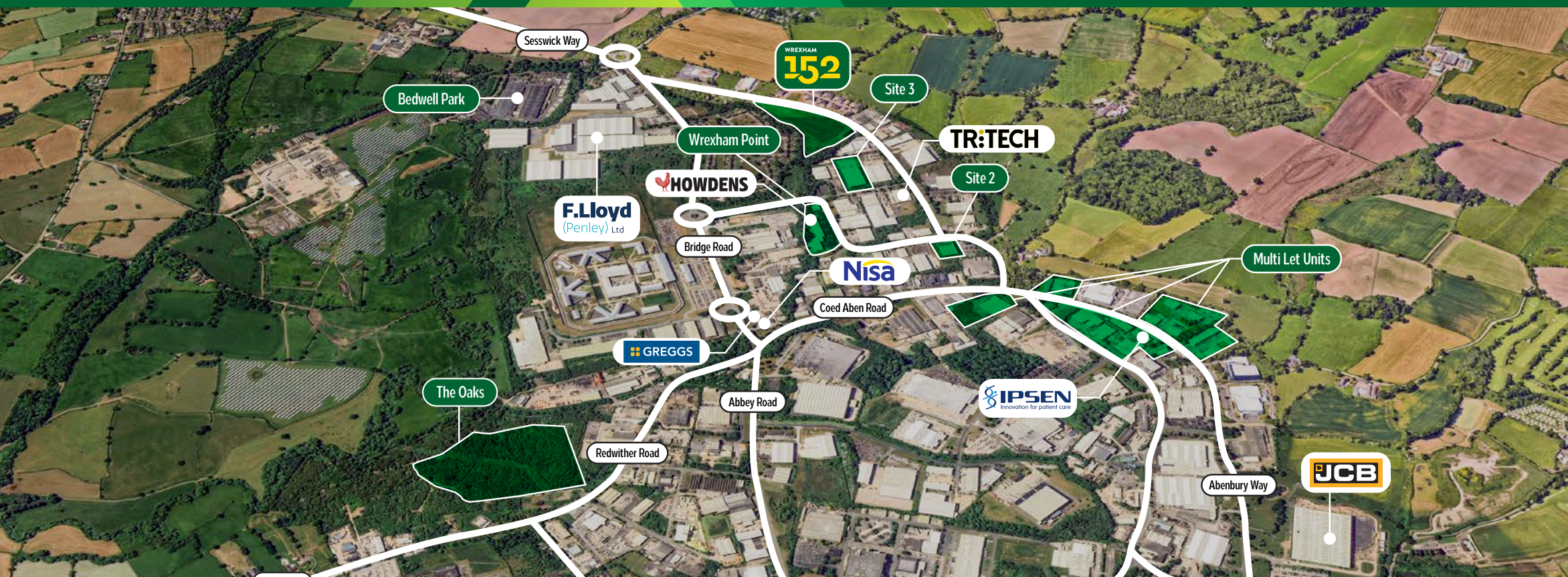
**MANCHESTER  
AIRPORT**  
46 MILES



**WIDNES FREIGHT  
TERMINAL**  
33 MILES

# WREXHAM

## INDUSTRIAL ESTATE





# EXCLUSIVE COMPANY

## WREXHAM INDUSTRIAL ESTATE

Wrexham 1M, a brand-new, state-of-the-art scheme from FI Developments, is a 60-acre strategic logistics and manufacturing site in the heart of Wrexham Industrial Estate, the UK's second-largest business park.

This new development is part of FI Real Estate Management's long-standing investment in Wrexham and the wider area. It has invested more than £136m

in Wrexham Industrial Estate since 2006, with commercial partners generating £50m of economic benefit to the region each year.

Wrexham Industrial Estate is already home to over 340 businesses, including manufacturing sector names such as JCB, TriTech, Bonaprene Products, and Hoya Lens, making it a prime location and a thriving community for ambitious businesses.

### KEY

- MAJOR OCCUPIERS
- FI REM SCHEME

# BUILDING WREXHAM'S FUTURE

At FI Developments, we're excited to be leveraging our best-in-class team to meet growing market demand and deliver Industrial sites, such as Wrexham 1M.

By bringing the entire build process in house, FI Developments guarantees deliverability with shorter timelines. We're equipped to handle your bespoke property requirements, from concept to completion.

As an essential component of our business, FI Developments works closely with our in-house teams to execute an expanding pipeline of projects across the UK.

This seamless collaboration enhances our industrial and commercial offerings.

Our construction experts possess the knowledge and experience to satisfy increasing market demand for new, high-quality industrial and commercial spaces.

With a 7.5m sq ft development pipeline, we're creating training and employment opportunities for local communities, while facilitating business growth in their respective areas.



[wrexham1m.co.uk](http://wrexham1m.co.uk)

# SPECIFICATION



**BESPOKE  
DESIGN  
AND BUILD**



**UNIT SIZES  
UP TO  
1M SQ FT**



**50KN/M²  
FLOOR  
LOADINGS**



**SECURED  
POWER  
UP TO 5MW**



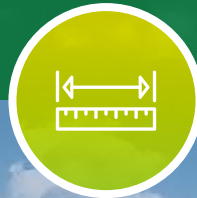
**SECURE  
& GATED  
SITE**



**154  
HGV/TRAILER  
SPACES**



**BUILDING  
HEIGHTS 20M  
TO HAUNCH**



**YARD  
DEPTHS  
50M**



**115  
DOCK  
LEVELLERS**



**27 EURO DOCK &  
LEVEL ACCESS  
DOORS**





**CIRCA 30 ACRES  
OF ECOLOGY  
& WELLBEING  
AREAS**



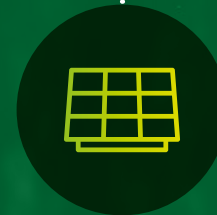
**TARGET A  
ENERGY  
PERFORMANCE**



**TARGET  
BREEAM  
EXCELLENT**



**TARGET CARBON  
NET ZERO IN  
CONSTRUCTION**



**SOLAR  
PANEL-READY  
ROOFS**

# SUSTAINABILITY **EXPLAINED**



**EV  
PARKING  
SPACES**



**ACCESSIBLE  
PARKING  
SPACES**



**ROOF  
LIGHTS  
15%**



**CYCLE  
STORE**



**RAIN  
WATER  
HARVESTING**



Next Level Logistics by



# WXM934

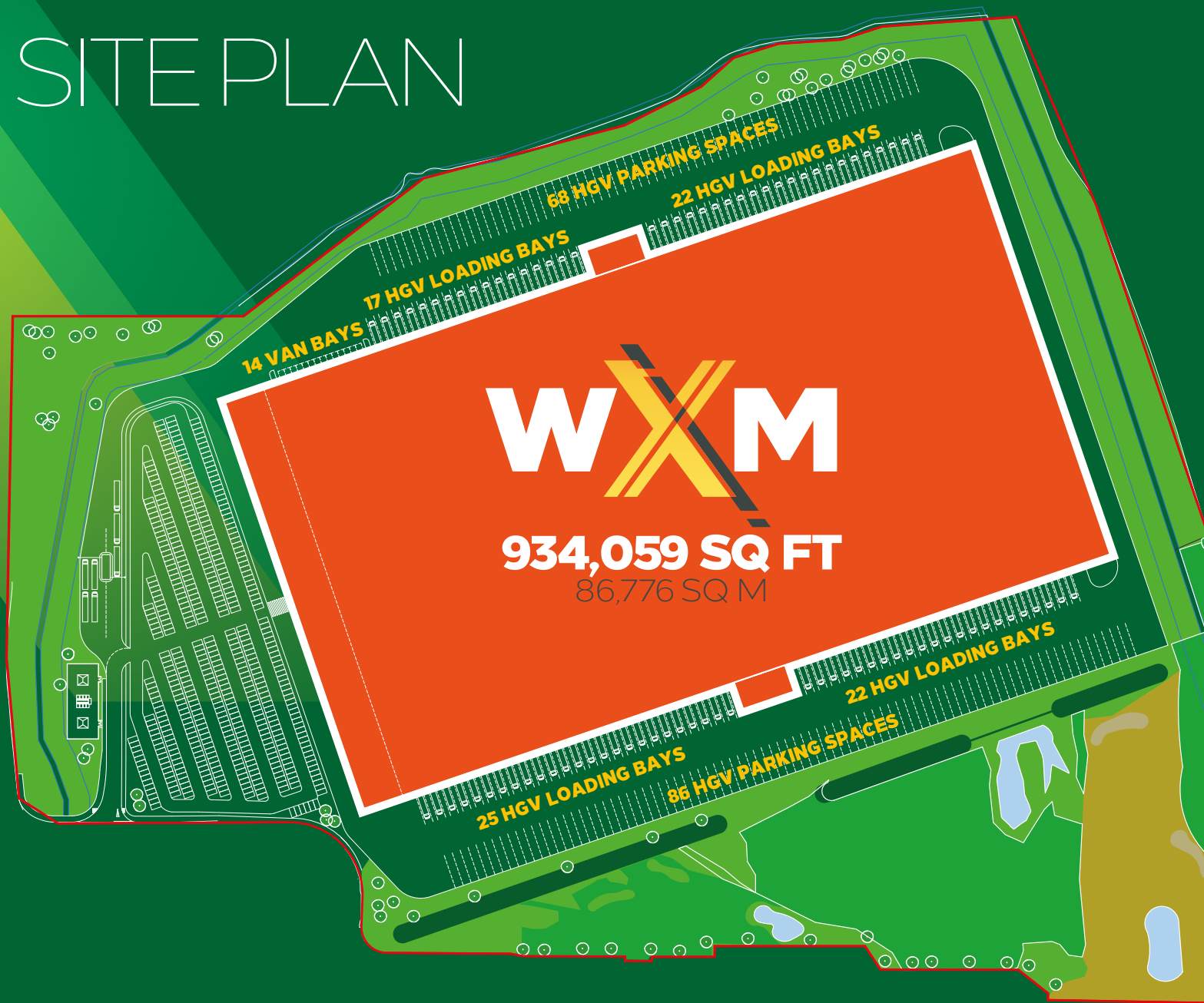


# WXM934

## SITE PLAN

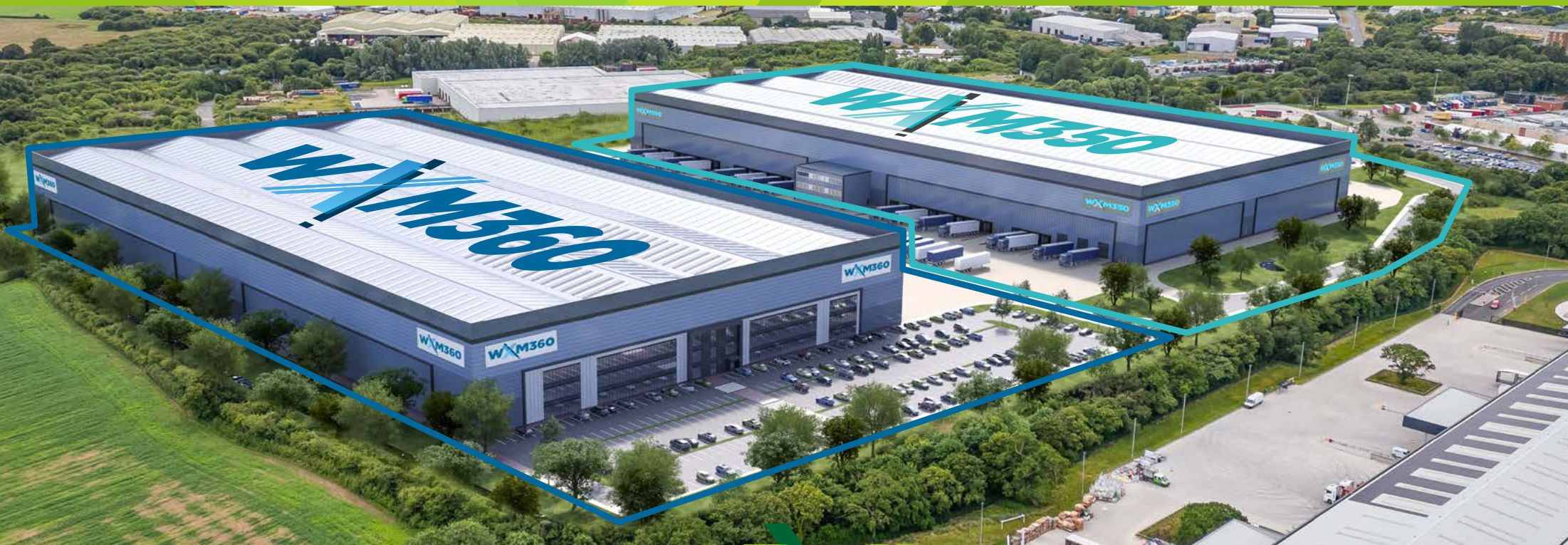
	SQ M	SQ FT
Ground Floor	77,136	830,000
Office Mezzanine	3,856	41,505
Storage Mezzanine	5,785	62,269
<b>TOTAL</b>	<b>86,777</b>	<b>934,059</b>

Car Spaces	497
Trailer Spaces	154
Dock/Level Access Doors	115
HGV Loading Spaces	193
Van Bays	14
Eaves Height	20m
Floor Loading	50 kN/sq m
Yard Depth	50m, North & South
Power Supply	Up to 5MW



[wrexham1m.co.uk](http://wrexham1m.co.uk)

**EXCEED** YOUR EXPECTATIONS



# WREXHAM™

Wrexham Industrial Estate > Wrexham > LL13 9UT

**DESIGN & BUILD OPTIONS, TWO HIGH-QUALITY LOGISTICS & DISTRIBUTION UNITS**  
**WXM350 350,000 SQ FT & WXM360 360,000 SQ FT**

# EXPANSIVE SPECIFICATION

## FEATURES

The units could benefit from the following base specification:



**UNIT SIZES  
UP TO  
1M SQ FT**



**50KN/M²  
FLOOR  
LOADINGS**



**POWER  
UP TO  
5MW**



**SECURE  
& GATED  
SITE**



**154  
TRAILER  
SPACES**



**BUILDING  
HEIGHTS 20M  
TO HAUNCH**



**YARD  
DEPTHS  
50M**



**115  
DOCK  
LEVELLERS**



**27 EURO DOCK &  
LEVEL ACCESS  
DOORS**

**WXM360**

**WXM350**

# WREXHAM1M

TAKE A  
**360° TOUR**



SITE PLAN

[wrexham1m.co.uk](http://wrexham1m.co.uk)

# WXM350

	SQ M	SQ FT
Ground Floor	32,516	350,000
Office Mezzanine	1,625	17,500
Storage Mezzanine	2,438	26,250
<b>TOTAL</b>	<b>32,516</b>	<b>350,000</b>

Car Spaces	344
Trailer Spaces	95
Dock Doors	55
Level Access Doors	6
Euro Docks	16
Eaves Height	20m
Floor Loading	50 kN/sq m
Yard Depth	50m, East and West
Power Supply	Up to 2.5MW

# WXM360

	SQ M	SQ FT
Ground Floor	33,445	360,000
Office Mezzanine	1,672	18,000
Storage Mezzanine	2,508	27,000
<b>TOTAL</b>	<b>33,445</b>	<b>360,000</b>

Car Spaces	355
Trailer Spaces	95
Dock Doors	36
Level Access Doors	14
Euro Docks	3
Eaves Height	20m
Floor Loading	50 kN/sq m
Yard Depth	50m
Power Supply	Up to 2.5MW

# WREXHAM™



# FI DEVELOPMENTS: READY TO DELIVER **GUARANTEED DELIVERABILITY**

At FI Developments, we leverage our best-in-class team to meet the growing market demand for premium industrial and commercial spaces

By bringing the entire build process in-house, our construction arm guarantees deliverability with shorter timescales. We're equipped to handle your bespoke property requirements from inception to completion.

As an essential component of our business, FI Developments works closely with our construction team to execute our expanding pipeline of new-build projects across the UK.

This seamless collaboration enhances our industrial and commercial offerings.

Our construction experts possess the knowledge and experience necessary to satisfy the increasing market demand for new, high-quality industrial and commercial spaces.

With a 7.5 million square foot new-build pipeline, we're creating training and employment opportunities for local communities while facilitating business growth in their respective areas.

[fi-developments.com](https://fi-developments.com)

Next Level Logistics by  
**FI DEVELOPMENTS**  
DESIGN | BUILD | RENT



**DESIGN**



**BUILD**



**RENT**



wrexham1m.co.uk

# WREXHAM1M

Next Level Logistics by

 **FI DEVELOPMENTS**  
DESIGN | BUILD | RENT  
**0845 500 6161**  
www.FI-developments.com

earmstrong@fi-rem.com  
**07740 546 216**

bbyrne@fi-rem.com  
**07721 605 132**

sratcliffe@fi-rem.com  
**07825 973 651**

 **CUSHMAN & WAKEFIELD**  
**0161 235 8998**  
cushmanwakefield.co.uk

laurence.davies@cushwake.com  
**07385 410 942**

rob.ptaylor@cushwake.com  
**07825 193 365**

**LegatOwen**  
CHARTERED SURVEYORS  
**01244 408200**  
legatowen.co.uk

markdiaper@legatowen.co.uk  
**07734 711 409**

harrietcope@legatowen.co.uk  
**07548 845 167**

**B8**  
**0161 375 6000**  
www.b8re.com

alex@b8re.com  
**07951 277 612**

jon@b8re.com  
**07738 735 632**

The Agents, for themselves and for the Seller/Lessor of this property whose agents they are, give notice that: 1. These particulars do not constitute any part of an offer or a contract; 2. All statements contained in these particulars are made without responsibility on the part of the Agent(s) or the Seller/Lessor; 3. None of the statements contained in these particulars is to be relied upon as a statement or representation of fact; 4. Any intending Buyer or Tenant must satisfy themselves by inspection or otherwise as to the correctness of each of the statements contained in these particulars; 5. The Seller/Landlord does not make or give, and neither the Agent(s) nor any person in their employment has any authority to, make or give any representation or warranty whatever in relation to this property. April 2025. Designed and produced by Creativeworld. T: 01282 858200.  
\*Illustrative Masterplan and supporting information subject to change.