

77

# Shaftesbury Avenue

AVAILABLE NOW: 6,000 - 27,000 SQ FT  
OF NEWLY REFURBISHED CAT A SPACE



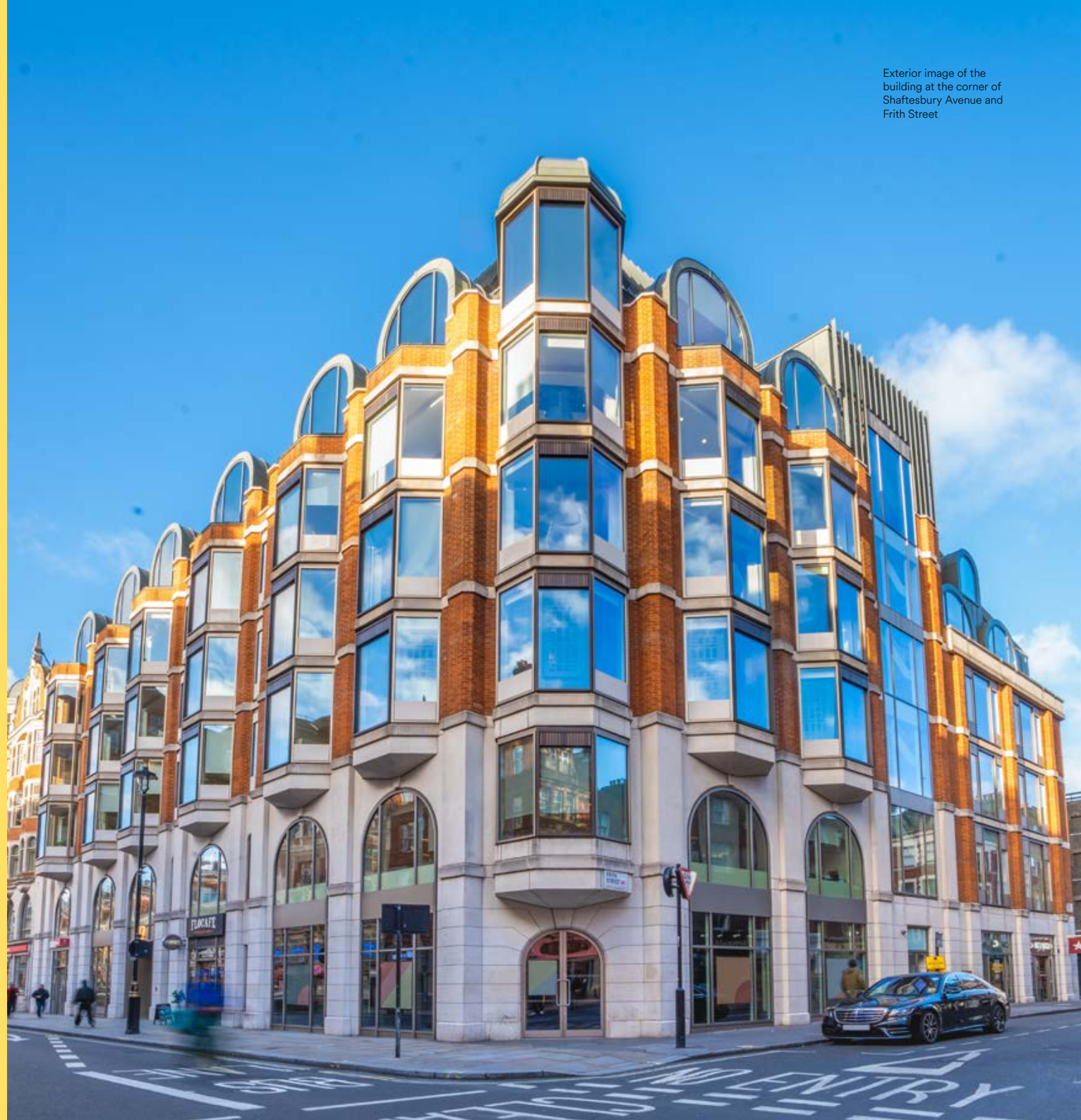
**77 Shaftesbury Avenue is an iconic office building with 26,900 sq ft available office space to let.**

**The reception area, 3rd, 4th and 6th floors have been comprehensively refurbished to offer light and welcoming workspaces.**

**The building offers showers and changing facilities, cycle storage and a private roof terrace on the 6th floor offering views across Soho.**



77 Shaftesbury Avenue lies in vibrant Soho and is just a few minutes' walk to Piccadilly Circus and the newly opened Elizabeth Line at Tottenham Court Road station.



Exterior image of the building at the corner of Shaftesbury Avenue and Frith Street





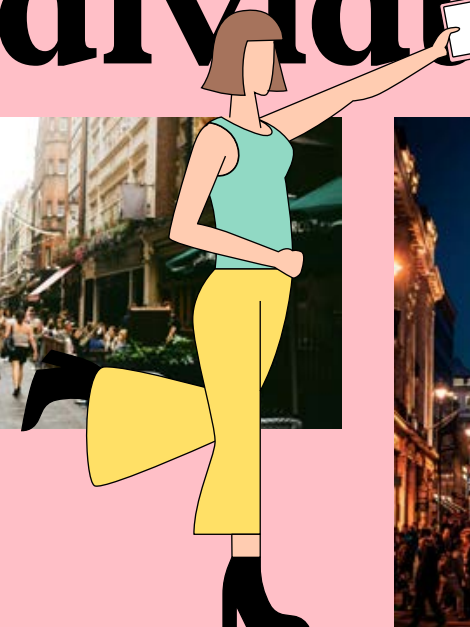
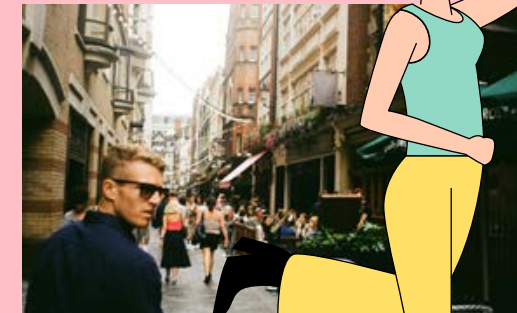
# Soho: the home of



Buzzing with  
some of London's  
best restaurants,  
entertainment  
& nightlife.



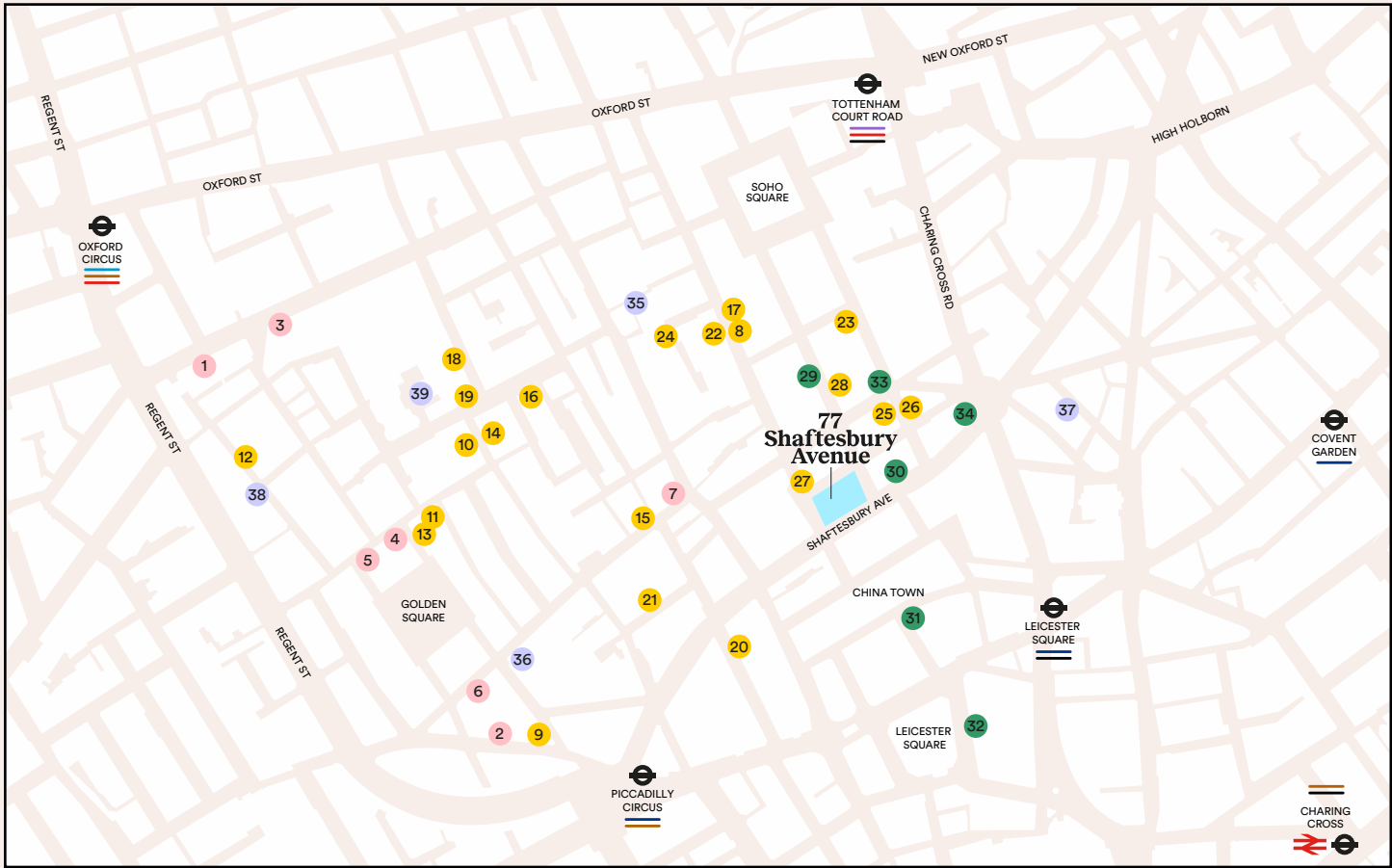
# individuality





# Central location, great connections

Seven London underground stations within a 15 minute walk, Soho's connectivity, along with its creative spirit and eclectic mix of occupiers, makes it a premium central London location.



## RETAIL

- 1 - Liberty
- 2 - Whole Foods
- 3 - Levi's
- 4 - Ganni
- 5 - B&sh
- 6 - Rapha
- 7 - JW Anderson

## FOOD & DRINK

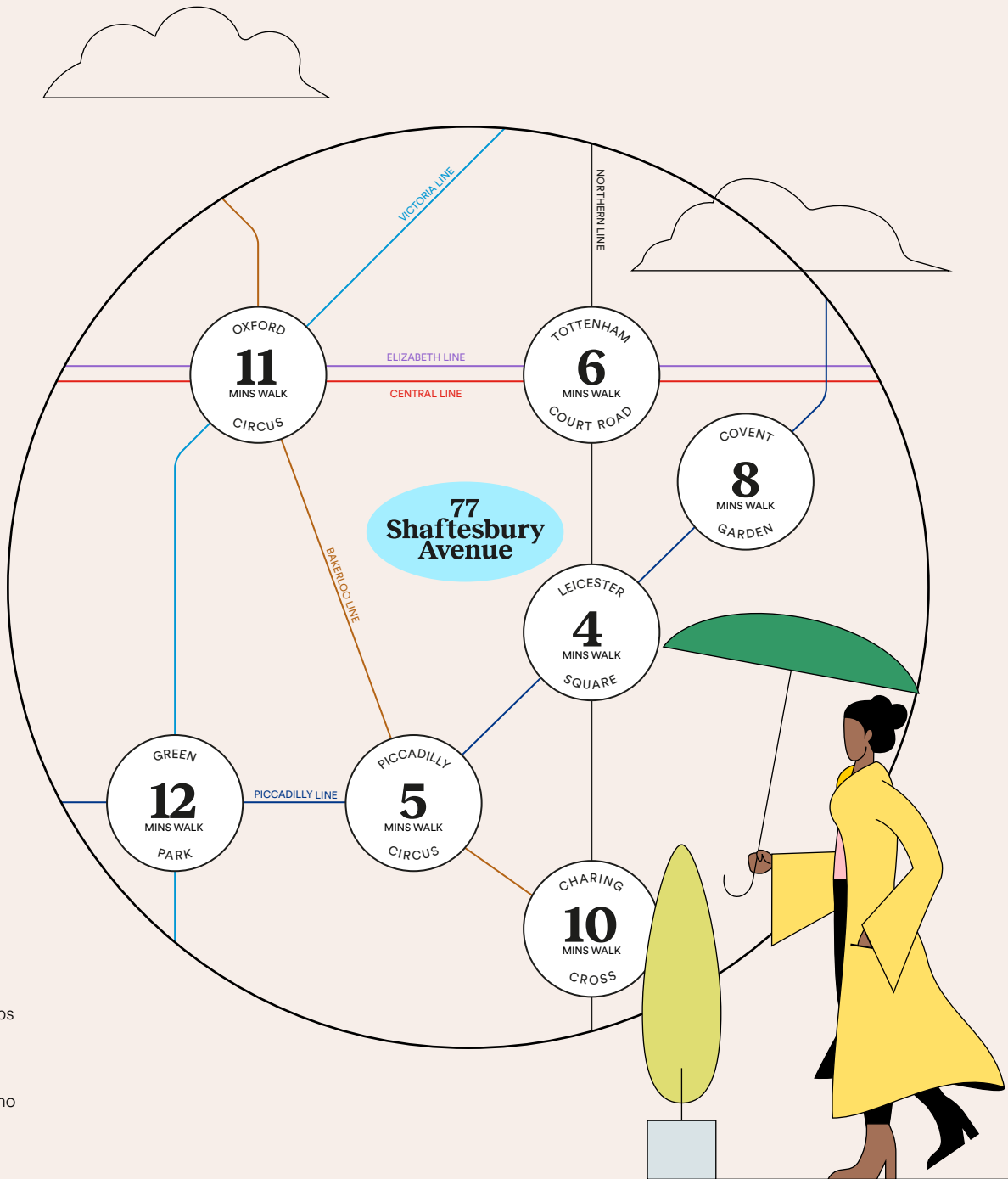
- 8 - Quo Vadis
- 9 - Brasserie Zedel
- 10 - Mildreds
- 11 - Sticks 'n' Sushi
- 12 - Dishoom
- 13 - Bob Bob Ricard
- 14 - Andrew Edmunds
- 15 - Randall & Aubin
- 16 - Temper
- 17 - Barrafina
- 18 - Social Eating House
- 19 - Brindisa
- 20 - The Palomar
- 21 - Boca di Lupo
- 22 - Soho House
- 23 - Lina Stores

## ENTERTAINMENT

- 24 - Refuel
- 25 - Kettner's Townhouse
- 26 - The Coach & Horses
- 27 - The French House
- 28 - Bar Italia
- 29 - Ronnie Scott's
- 30 - Curzon Cinema
- 31 - Prince Charles Cinema
- 32 - Odeon Cinema
- 33 - Prince Edward Theatre
- 34 - Palace Theatre

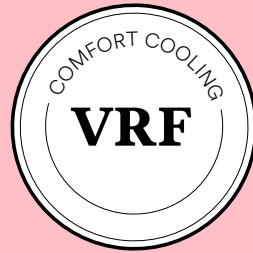
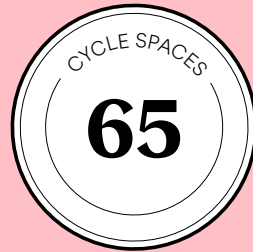
## GYMS

- 35 - Soho Fitness Labs
- 36 - Third Space
- 37 - Digne Fitness
- 38 - Barry's Soho
- 39 - F45 Training Soho

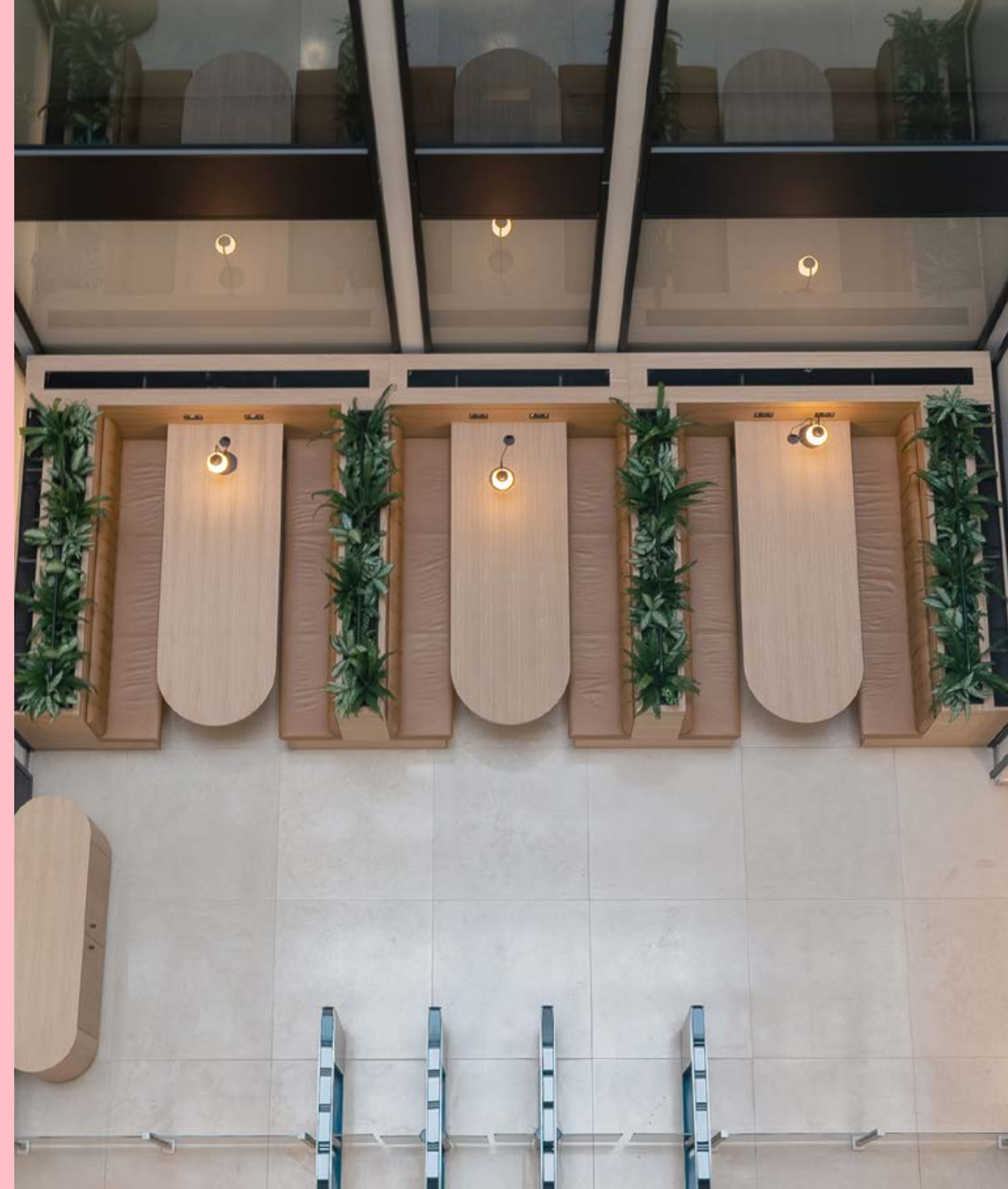


# Building highlights

77 Shaftesbury Avenue offers all the premium amenities you would expect to find in central London's most desirable offices, including changing rooms, cycle storage, a private roof terrace and communal workspace with self-service coffee in the reception area.



Right - Communal workspace in the atrium







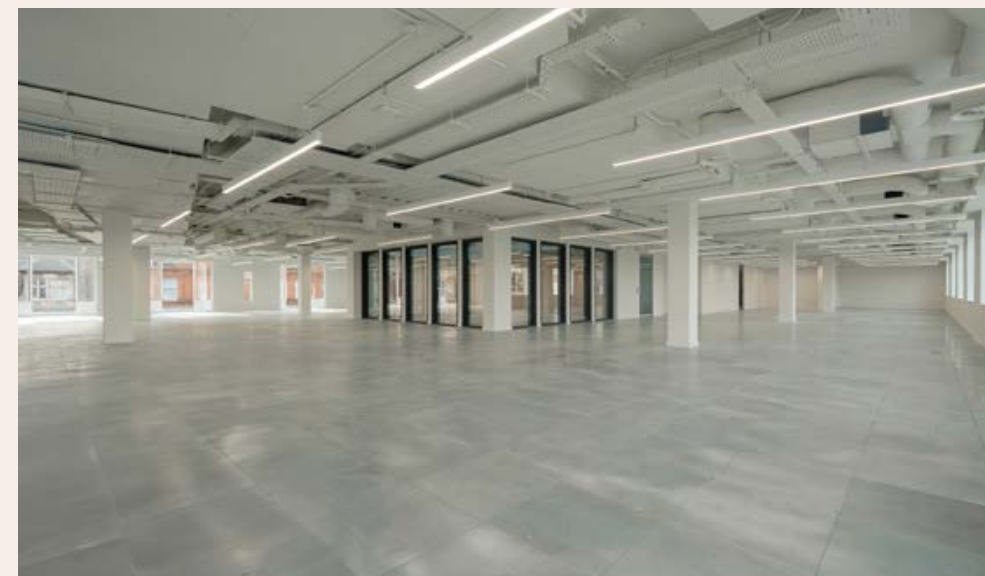
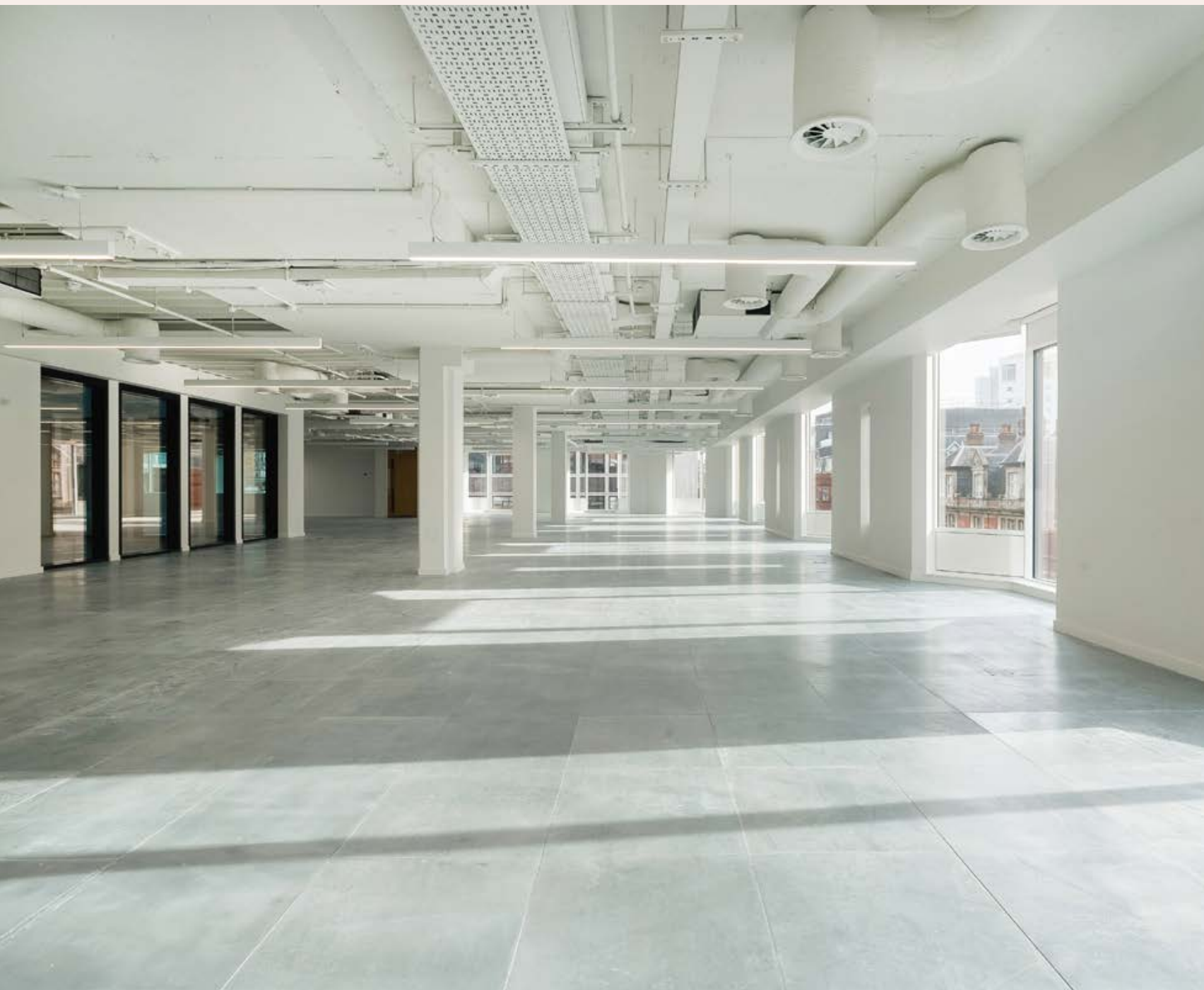
Left - 6th floor office space  
Bottom left - 6th floor office space  
Below - 6th floor private roof terrace







Top left - Reception area  
 Bottom left - Coffee and communal workspace in atrium  
 Right - Atrium



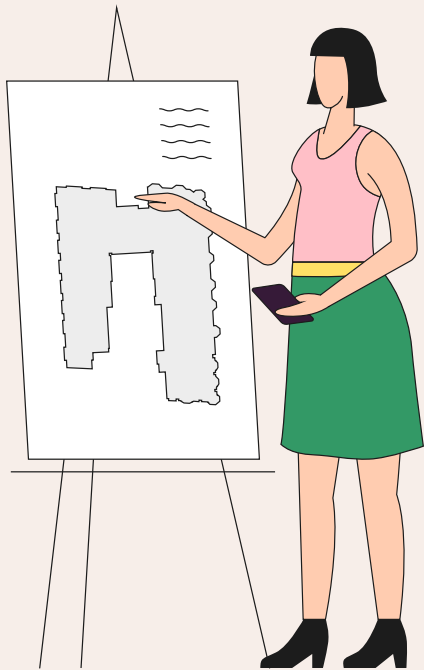
Left - 4th floor office space  
Top right - 3rd floor office space  
Bottom right - 4th floor office space



# Floorplans

## Accommodation

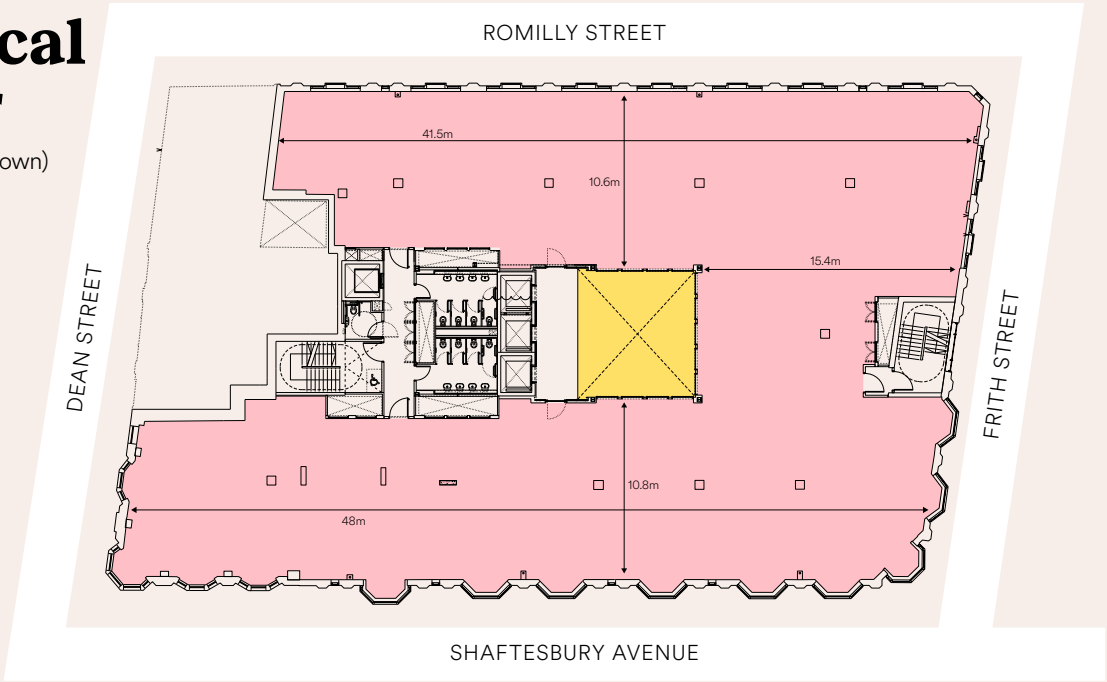
| FLOOR | SQ FT  | SQ M  |
|-------|--------|-------|
| 6th   | 6,035  | 561   |
| 4th   | 10,107 | 939   |
| 3rd   | 10,749 | 999   |
| TOTAL | 26,891 | 2,499 |



## Typical floor

(4th floor as shown)

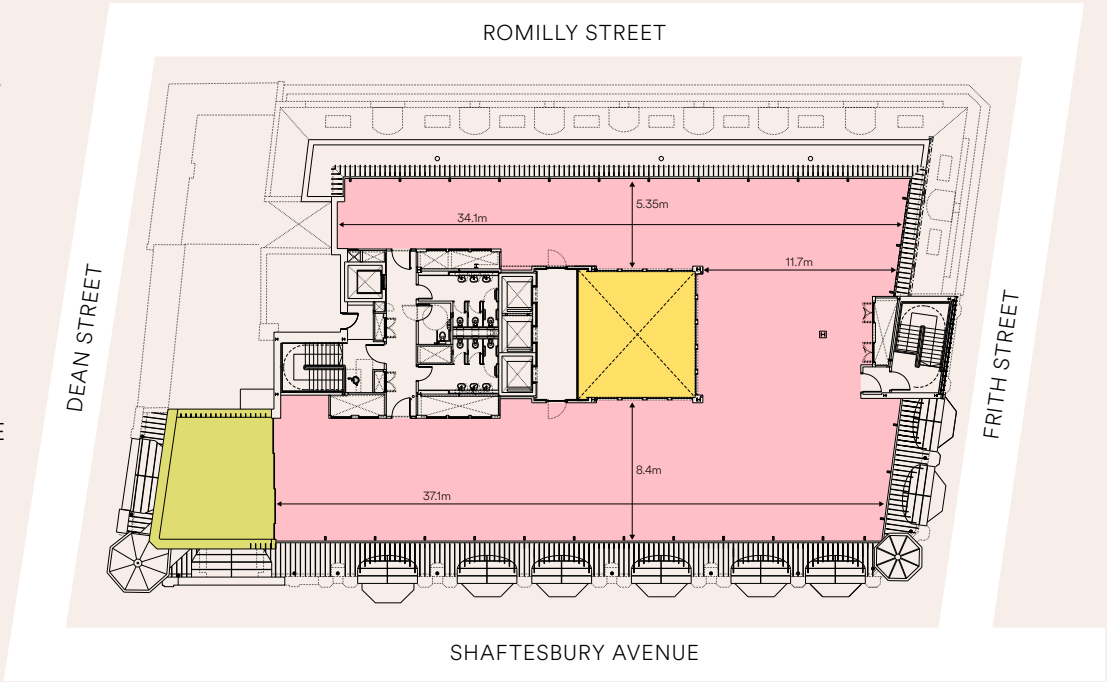
- OFFICE
- ATRIUM



4th floor office space

## 6th floor

- OFFICE
- ATRIUM
- PRIVATE ROOF TERRACE

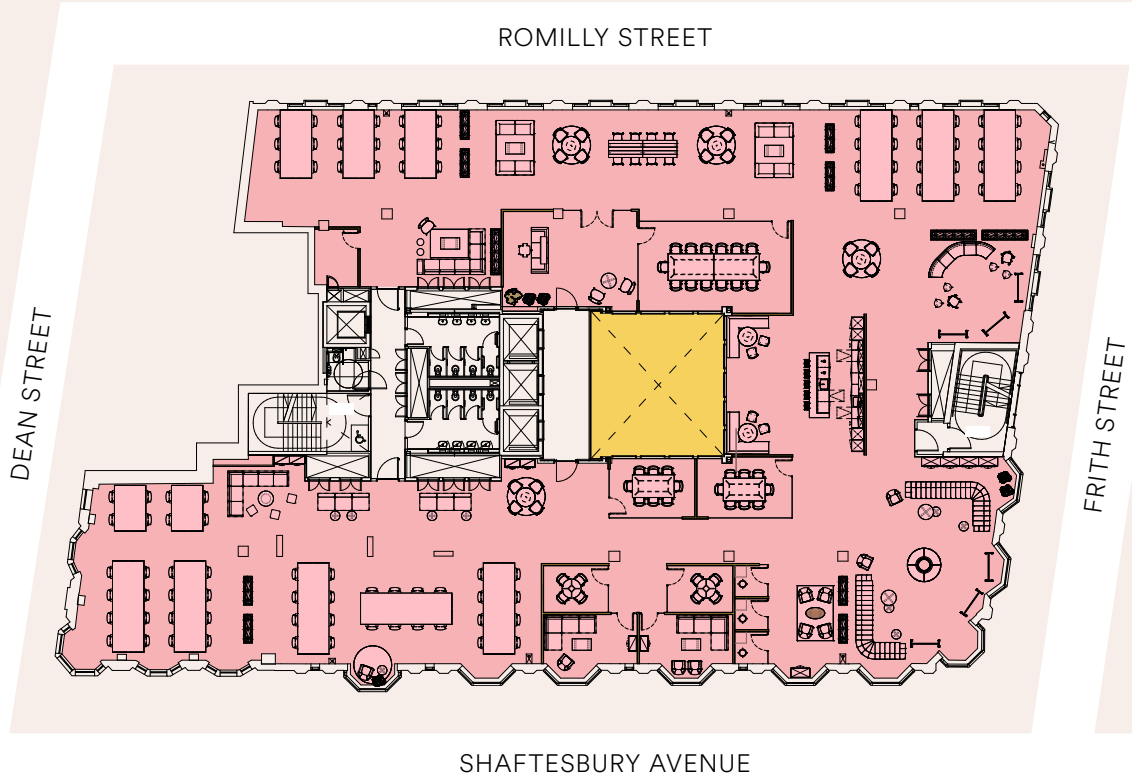


# Space plans

## Typical floor

(4th floor as shown)

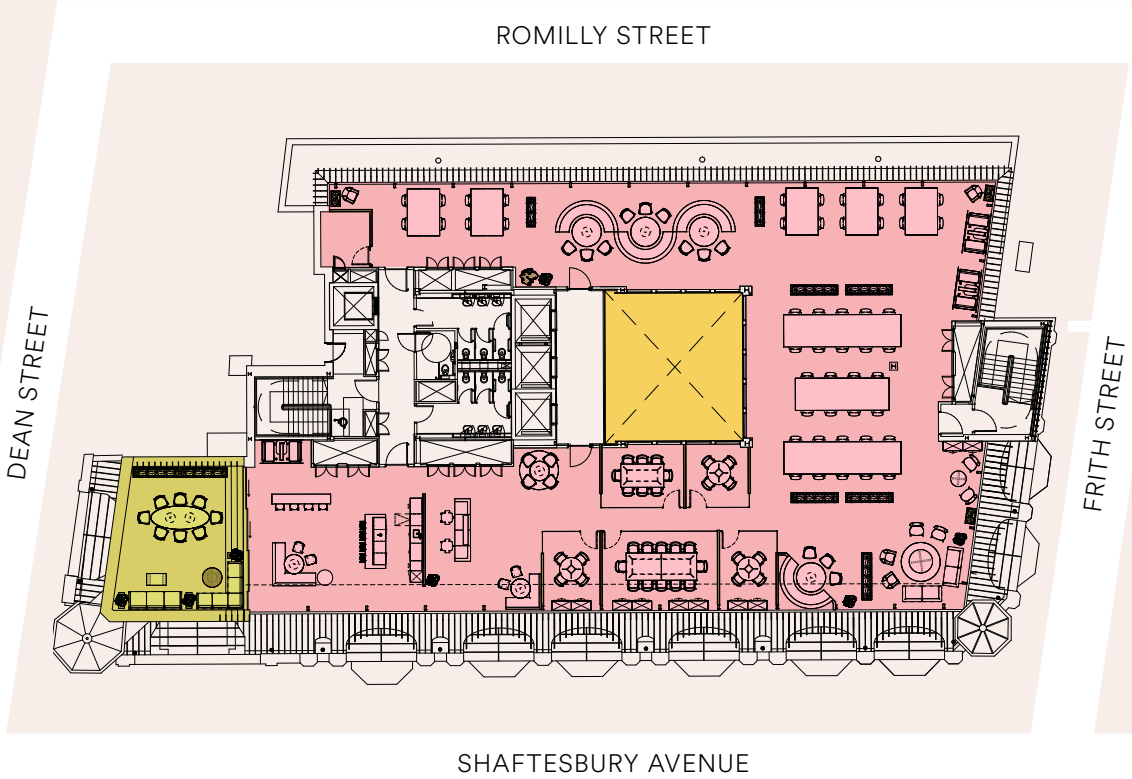
OFFICE   ATRIUM



INDICATIVE SPACE PLAN: 1 PERSON PER 12M / 90 DESKS

## 6th floor

OFFICE   ATRIUM   PRIVATE ROOF TERRACE



INDICATIVE SPACE PLAN: 1 PERSON PER 12M / 48 DESKS



# Get in touch

## CBRE

CELESTE SAVAGE  
T: +44 (0)7880 460 242  
E: celeste.savage@cbre.com

NATHALIE SPINK  
T: +44 (0)7385 414 222  
E: nathalie.spink@cbre.com

ADAM COSGROVE  
T: +44 (0)7500 872 851  
E: adam.cosgrove@cbre.com

## CUSHMAN & WAKEFIELD

JOEL RANDALL  
T: +44 (0)7525 897 012  
E: joel.randall@cushwake.com

HECTOR MACNEAL  
T: +44 (0)7885 201 163  
E: hector.macneal@cushwake.com

ANDY TYLER  
T: +44 (0)7973 836 236  
E: andy.tyler@cushwake.com

77  
Shaftesbury  
Avenue

77SHAFTESBURYAVENUE.CO.UK

