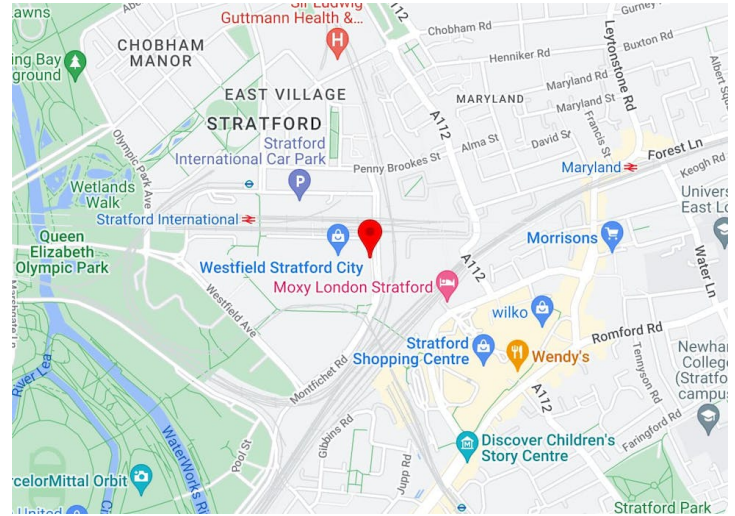




One Stratford Place, London, E20 1EG

21,000 sq ft of ideally connected workspace sitting above Stratford Station at the heart of one of London's most innovative neighbourhoods.

- Remodelled communal roof terrace
- BREEAM 'Excellent'
- 2.85m floor to ceiling height
- Cycle spaces
- Double height reception
- LG7 lighting
- Occupational density 1:10
- Shower facilities



Summary

Available Size	10,000 to 21,007 sq ft / 929.03 to 1,951.61 sq m
Rent	£39.50 per sq ft
Service Charge	£12 per sq ft
Car Parking	N/A
Estate Charge	N/A
EPC	B (31)

Description

One Stratford Place is prominently located within the heart of buzzing Stratford.

The building has recently benefitted from a remodelled roof terrace and renovation of the common areas for the use of all tenants.

Location

One Stratford Place is ideally positioned for transport links from Crossrail, the Central and Jubilee lines, as well as Stratford's mainline station (with links to St Pancras and London City Airport).

The property is also on the doorstep of Westfield Stratford, which is the 11th largest urban shopping centre in Europe, as well as London's Olympic Park.

Accommodation

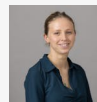
The accommodation comprises the following:

Name	sq ft	sq m	Availability
10th	21,007	1,951.61	Available
Total	21,007	1,951.61	



Alex Novelli

0203 296 2133 | 0786 059 4752
alex.novelli@cushwake.com



Olivia Hart

07825861813
olivia.hart@cushwake.com



