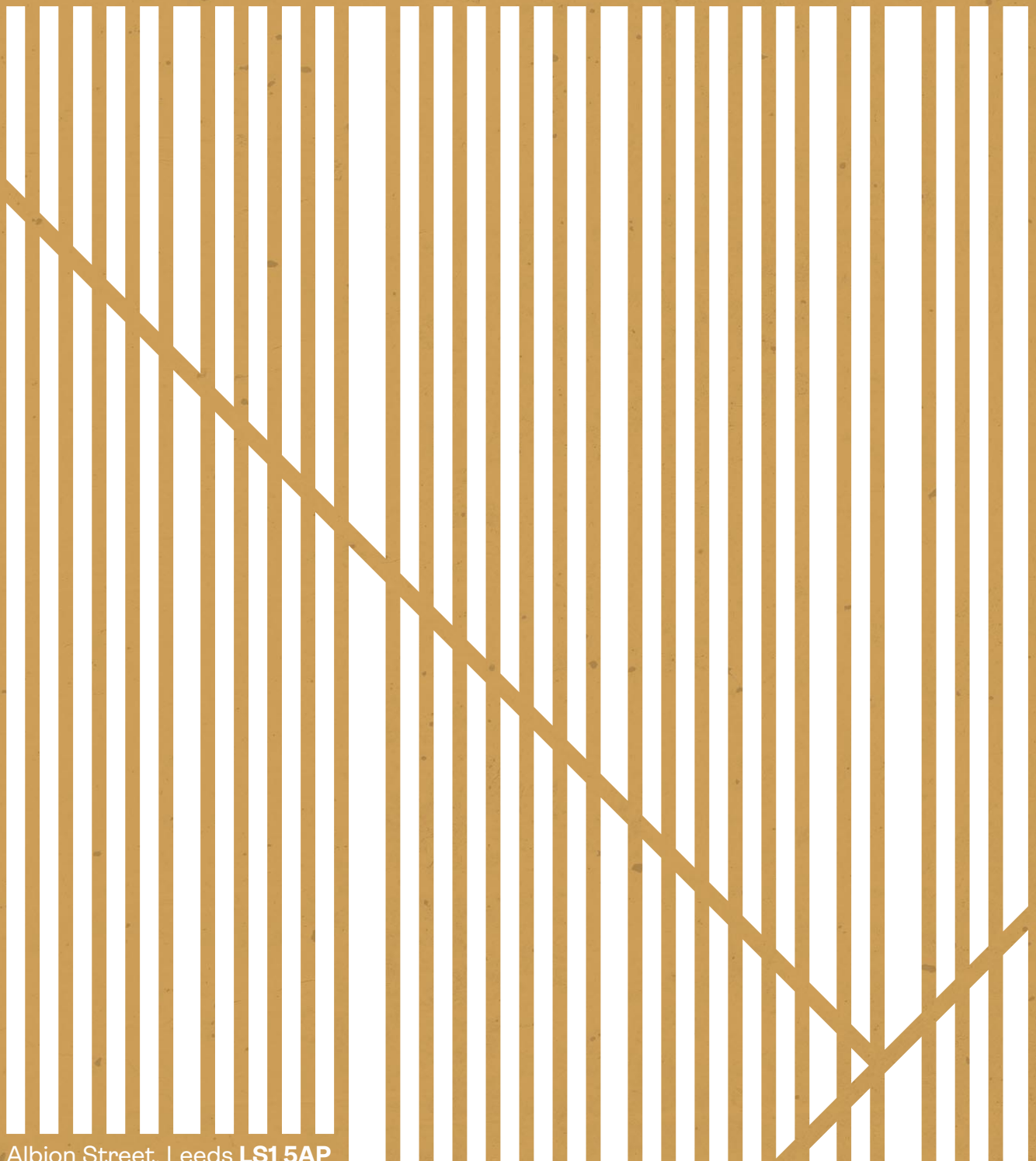


Airedale House

1,060 - 6,324 sq ft

High quality offices to let in the heart of Leeds



Albion Street, Leeds **LS1 5AP**

Airedale House

Airedale House is a 6 storey building providing high quality office accommodation on floors 3 to 6.

The vacant office accommodation is situated at 3rd floor and 6th floor level and provides high quality office space.



Space that works

Innovative energy efficient work space that benefits from the following specification:

- | | | | | |
|---|---|---|---|---|
|  |  |  |  |  |
| Energy efficient design | PIR controlled LED lighting | Suspended ceilings | Kitchen facilities | Showers |
|  |  |  |  |  |
| Double glazed windows | Air conditioning | Two 8-person passenger lifts | Male & Female WC facilities | High-quality meeting rooms |

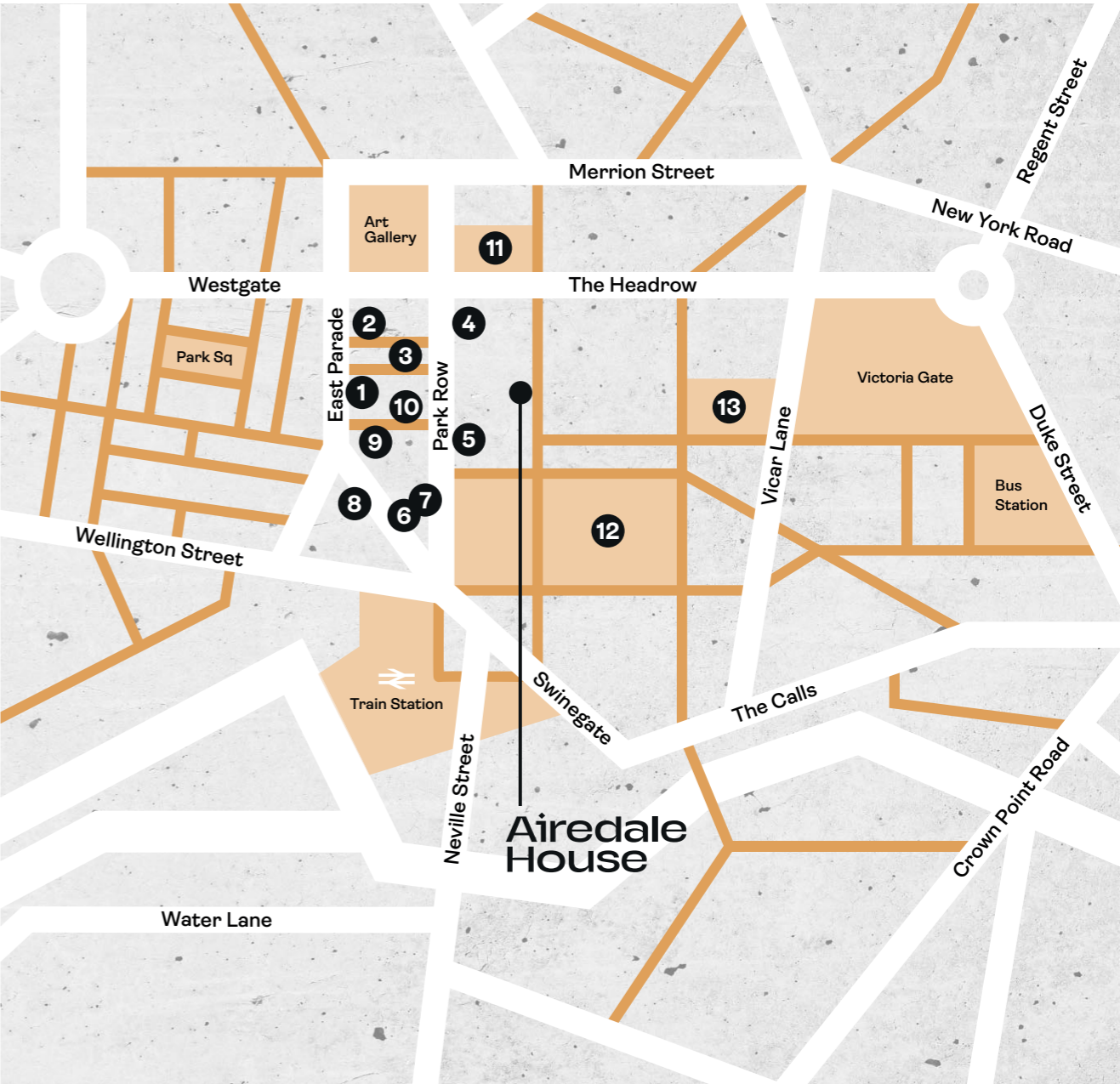


Unrivalled location

Airedale House is prominently situated on Albion Street within the heart of the prime commercial district of Leeds City Centre. The Property benefits from being in close proximity to an abundance of restaurants, bars and retail stores. Airedale House is also within a short walk of the Trinity Leeds shopping centre, as such it provides the perfect location for staff convenience and client entertaining.

Albion Street is a busy pedestrian thoroughfare benefiting from excellent public transport links with numerous bus stops and Leeds City Station within a short walk.

- | | | | |
|---|------------------------|----|---------------|
| 1 | All Bar One | 7 | Banyan |
| 2 | San Carlo | 8 | Sous Le Nez |
| 3 | Sukhothai | 9 | Black House |
| 4 | Gaucha | 10 | Lost & Found |
| 5 | El Gato Negro | 11 | The Light |
| 6 | Restaurant Bar & Grill | 12 | Trinity Leeds |
| | | 13 | Victoria Qtr |



Ready for immediate occupation



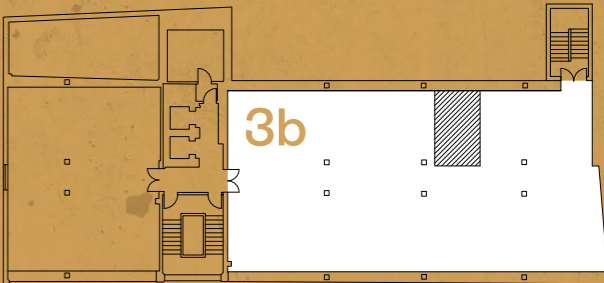
Accommodation

There is one remaining suite available in Airedale House on the 3rd Floor and two suites available on the 6th Floor.

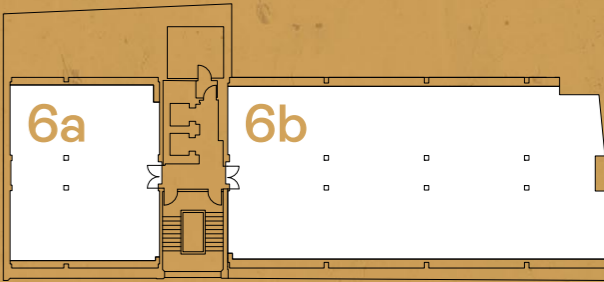
Suite 3b	2,632 sq ft
Suite 6a	1,060 sq ft
Suite 6b	2,623 sq ft
Total	6,324 sq ft

Terms

Each suite is available by way of new full repairing and insuring lease for a term of years to be agreed.



3rd Floor



6th Floor

Sustainability

Energy Saving Technologies

Thermal modelling has been undertaken to target key areas to improve the buildings insulation characteristics.

'Intelligent' lighting systems within office areas, incorporate daylight and passive infrared sensors to reduce energy consumption.

Financials

The Government paid annual subsidy (Feed in Tariff) will be transferred to the service charge. This provides a long term financial cash benefit to reduce the running costs of the building.

EPC rating of B. This is extremely important considering ongoing discussions to levy differing business rate multipliers dependent on EPC level.

Energy Harvesting Technologies

A 6kWp Photovoltaic solar panel system is installed on the roof which will generate electricity for the core areas of the building.

By utilising these technologies it is anticipated that there will be a 25% reduction in CO² emissions.



Innovative energy efficient work space

Rental

Full details are available on application from the joint sole letting agents.

Car Parking

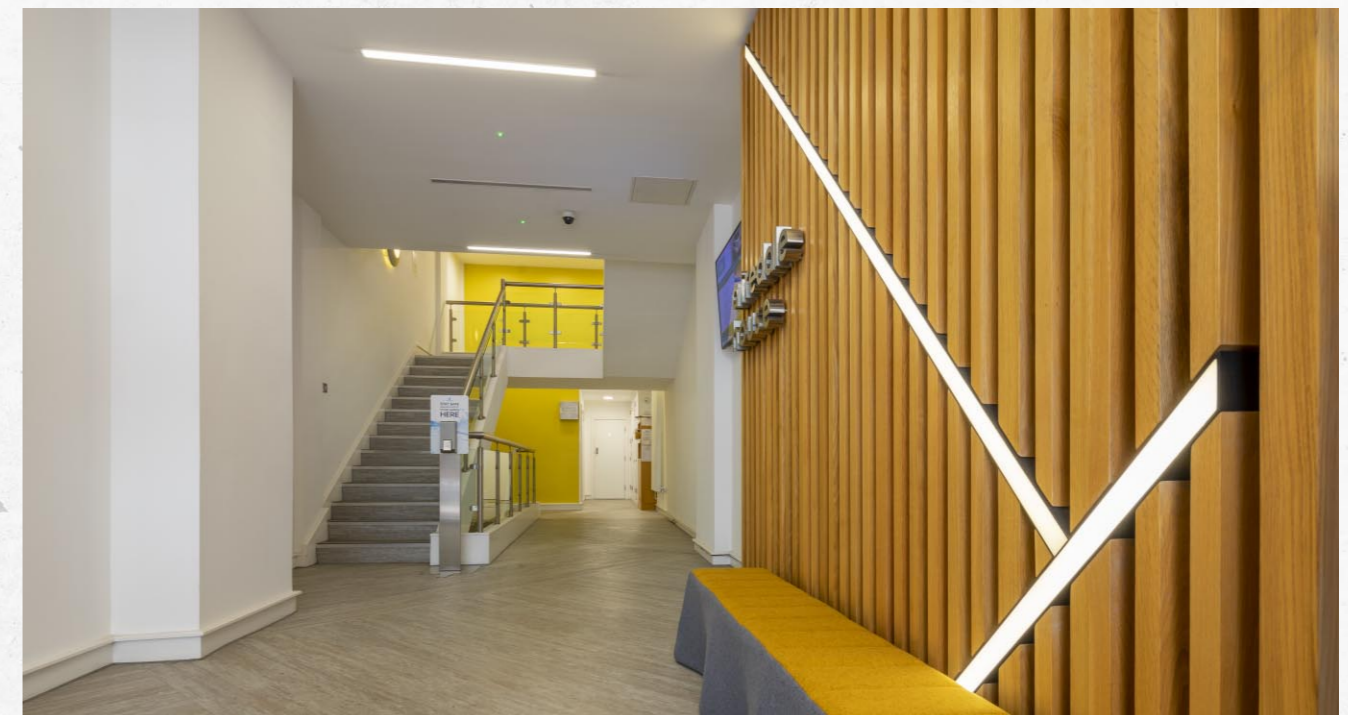
Airedale House benefits from on-site secure parking.

Rateable Value

We recommend all interested parties make their own enquiries to the VOA.

EPC

Airedale House has an EPC rating of B(46). A full copy of the EPC is available on request.



Viewing & further information

Strictly by appointment via the joint letting agents:



James Jackson

jamesjackson@cartertowler.co.uk

Clem McDowell

clemmcdowell@cartertowler.co.uk



Sam Jamieson

sam.jamieson@cushwake.com

Alice Gilman

alice.gilman@cushwake.com

IMPORTANT NOTICE RELATING TO THE MISREPRESENTATION ACT 1967 AND THE PROPERTY MISDESCRIPTION ACT 1991

Carter Towler and Cushman & Wakefield for themselves and for the vendors or lessors of this property, whose agents they are, give notice that: a) all particulars are set out as a general outline only for the guidance of intending purchasers or lessees and do not comprise any part of an offer or contract; b) all descriptions, dimensions, references to condition and necessary permissions for use and occupation and other details are given in good faith and are believed to be correct but any intending purchasers or tenants should not rely on them as statements or representations of fact but must satisfy themselves by inspection or otherwise as to the correctness of each of them. c) no person in the employment of Carter Towler and Cushman & Wakefield has any authority to make any representation of warranty whatsoever in relation to this property. The date of this publication is July 2024.