

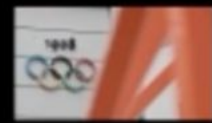


Fitted offices at 1 Wood Crescent

Television Centre presents:
Fully-fitted, hassle free workspaces
available on flexible lease terms

Fitted offices at 1 Wood Crescent

With three suites ranging from 44 – 60 desks, we are able to offer an easy ready-made solution for your business. Either simply furnished or a fully-managed offering, we can take the stress out of your move allowing you to get working from day one.



WHITE CITY



Location

WHITE CITY PLACE 

ITV
BBC
Gravity Media
Autolus
Jellycat
Synthase

L'Oreal
Novartis
ME+EM
Huckletree
Butternut Box

Imperial College London
ScaleSpace
Airbus

WEST Youth Zone

Wood Lane Station 



1 Wood Crescent

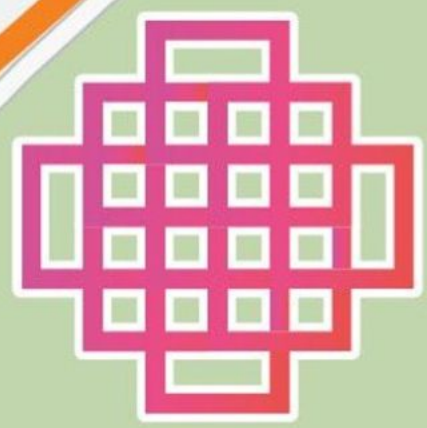


White City Station 

Royal College of Art

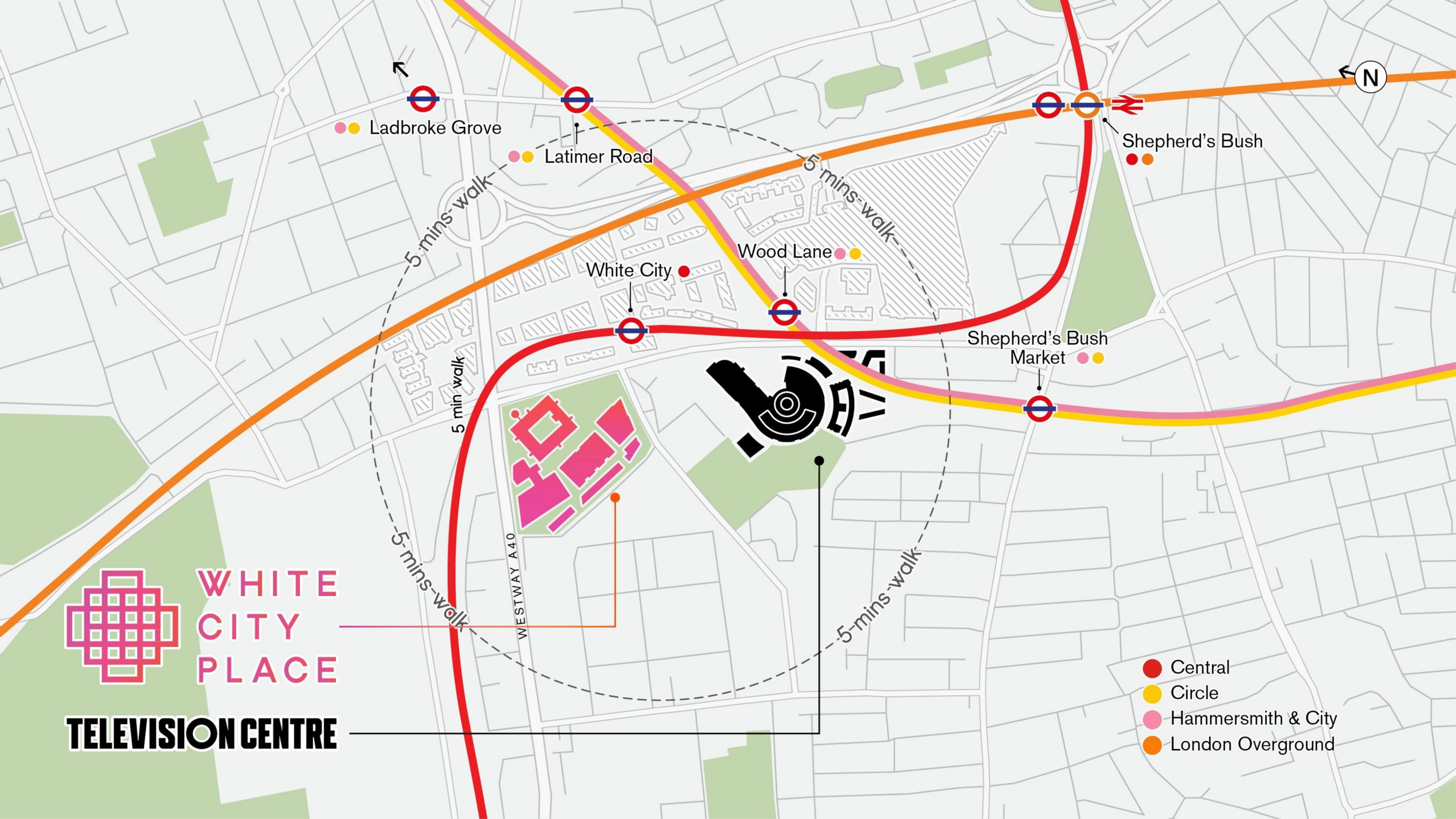
TELEVISION CENTRE

BBC Worldwide
BBC Studio Works
Publicis
PVH
Calvin Klein
Tommy Hilfiger
The White Company
White City House (Soho House)



WHITE
CITY
PLACE

TELEVISION CENTRE



Ladbrooke Grove

Latimer Road

Shepherd's Bush

5 mins-walk

5 mins-walk

Wood Lane

White City

Shepherd's Bush
Market

5 min-walk

5 mins-walk

WESTWAY A40

5 mins-walk

- Central
- Circle
- Hammersmith & City
- London Overground

Your options

1 Wood Crescent has 3 brand new, fitted, premium workspaces available fully-managed. Choose from a menu of services designed to remove unnecessary hassle and stress. We'll take care of your working environment, you take care of your business.

What you bring with you:

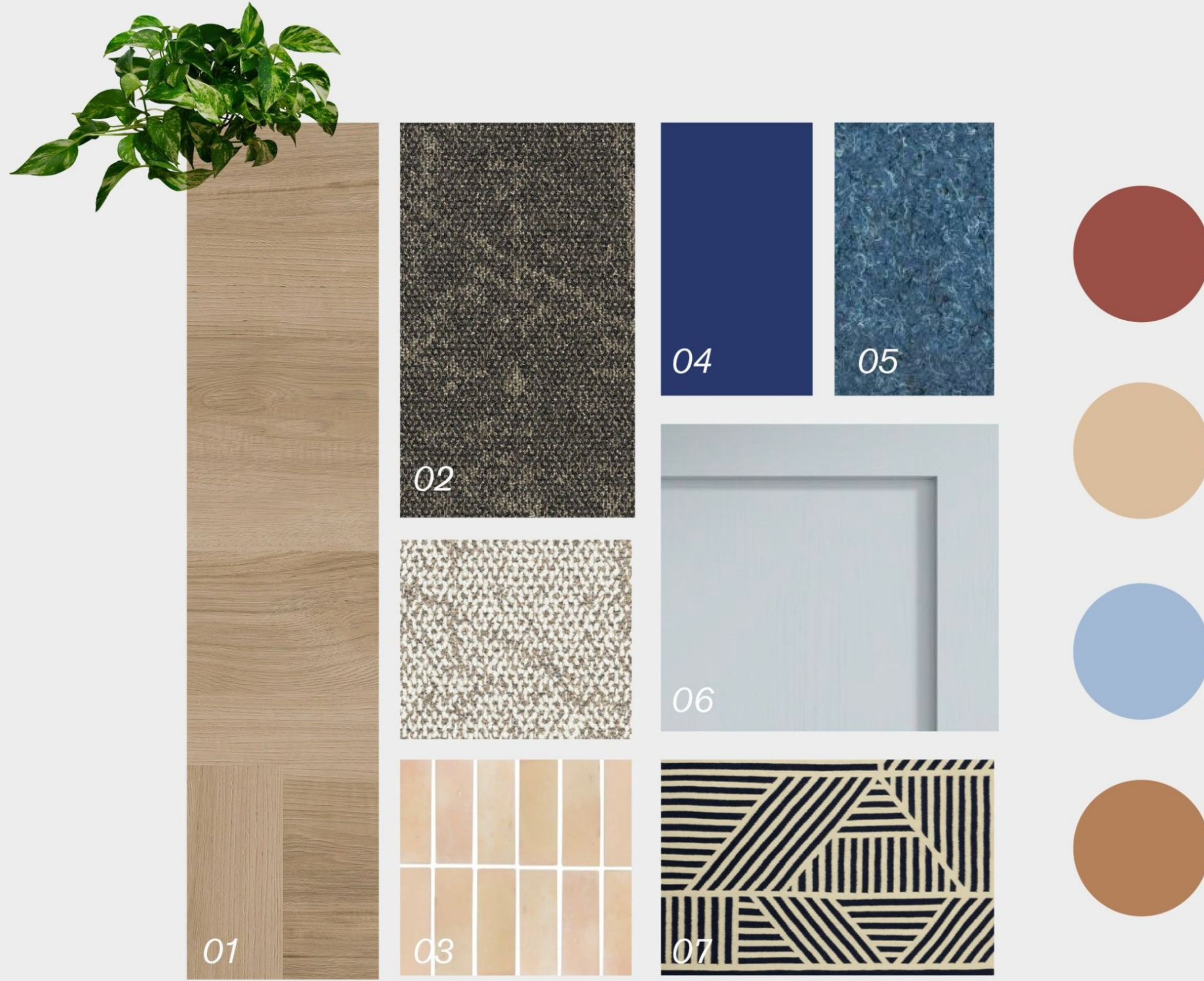
- Company branding
- Coffee machines
- AV equipment and desktops
- Contents insurance

Services included in your monthly rent	Fitted	Fully Managed – all inclusive
Brand new, premium fit out	●	●
Fully furnished and dressed	●	●
Flexible lease terms	●	●
Access to end of trip bike and changing facilities	●	●
Utilities and building insurance		●
M&E maintenance		●
Cleaning		●
Planting installation and upkeep		●
10 GB connectivity		●
Monthly breakfasts		●
Rent	●	●
Business rates		●
Service charge		●
Estates charge		●

Look and feel



Look and feel



- 01 Vinyl flooring
- 02 Carpet
- 03 Tile splashback
- 04 Studio Table colour
- 05 Recycled denim surfaces
- 06 Mist teapoint doors
- 07 Podcast space rug

Floorplan

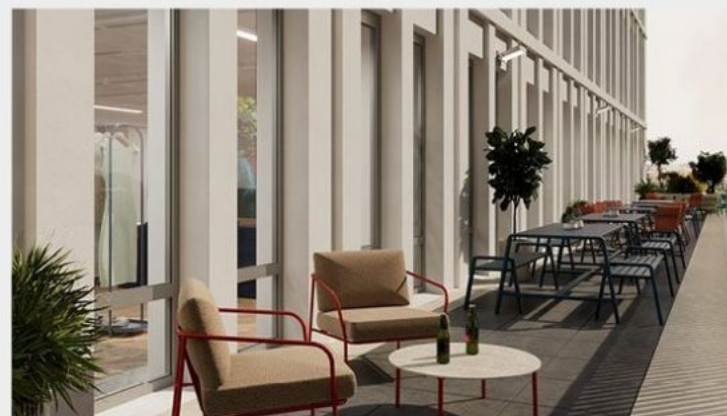
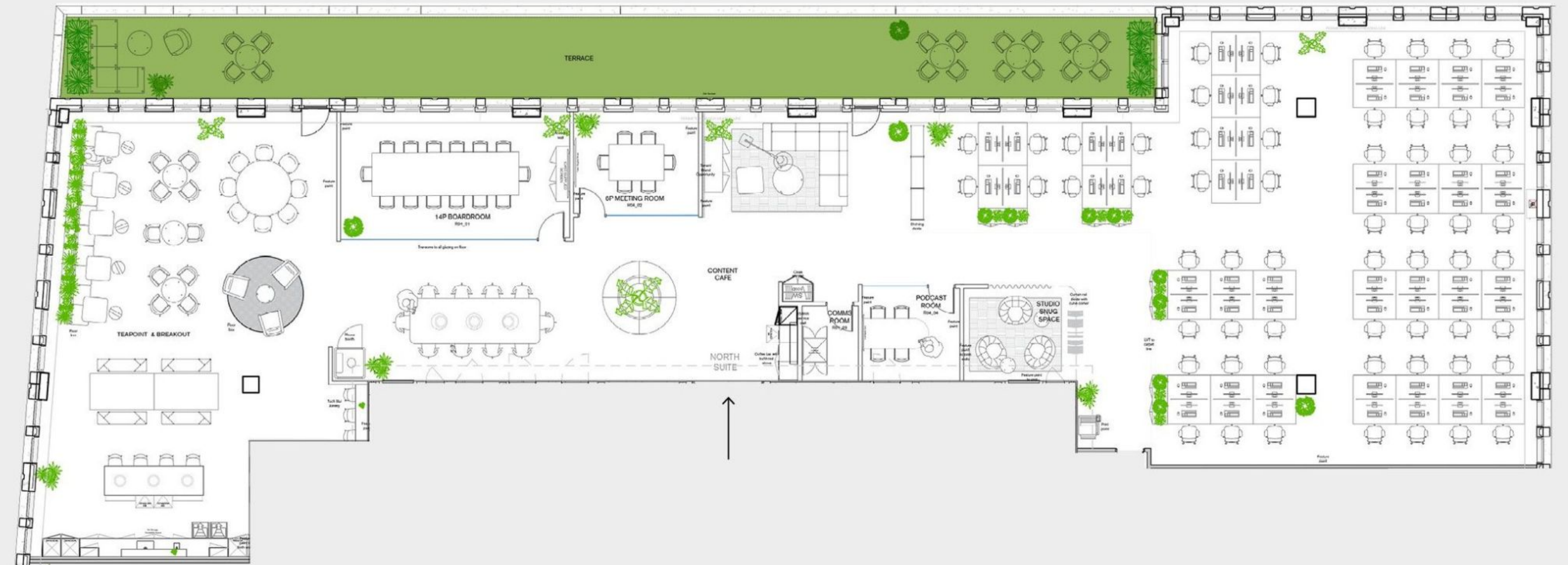
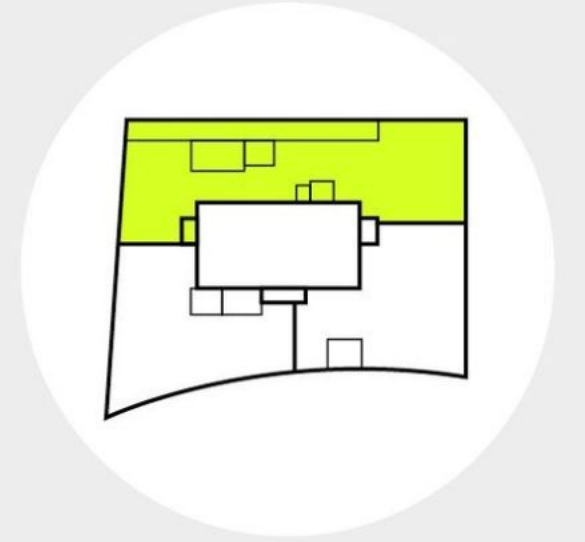
The 4th floor at 1 Wood Crescent has been fitted and furnished to provide three suites ranging in size from 4,379 to 5,977 sq ft of quality ready-to-use office space.

Each suite has been designed to provide the perfect balance of collaborative and efficient workspace allowing your business to do what you do best without the hassle.



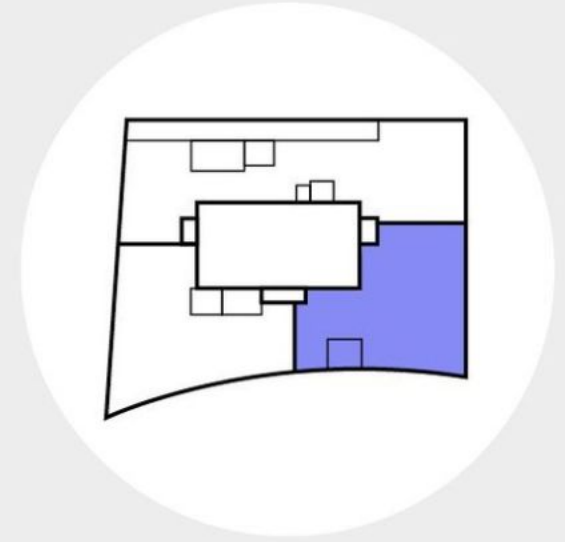
North Suite

Desk size:	1400 x 800 mm
Desk quantity:	60 desks
Floor area:	5,977 sq ft
Private terrace:	1,009 sq ft (furnished)



- 14 seat Board room
- 2 x 4-6 seat meeting rooms
- Podcast/informal meeting room
- Kitchenette and breakout areas
- Touchdown zone
- Client coffee bar
- Fully connected
- 1,000 sq ft furnished private terrace
- Exceptional natural light throughout
- Access to bike, shower and changing facilities

East Suite



Desk size: 1400 x 800 mm

Desk quantity: 44 desks

Floor area: 4,379 sqft

- 10 seat board room
- 2x 4-8 seat meeting rooms
- Kitchenette and breakout areas
- Touchdown zones
- Fully connected
- Ability for own reception desk
- Fully connected
- Exceptional natural light
- Access to bike, shower and changing facilities



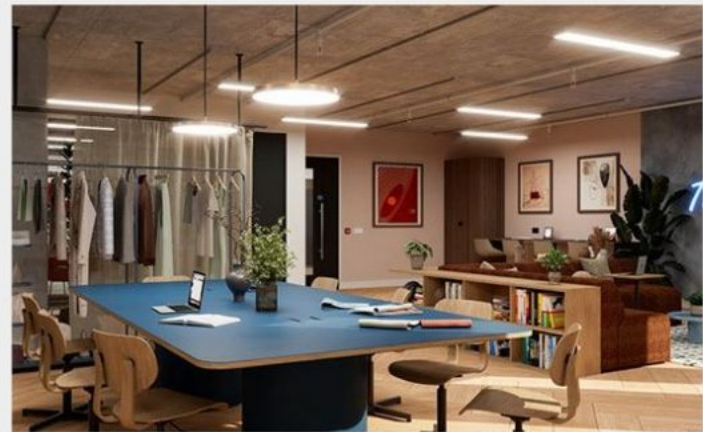
West Suite

Desk size: 1400 x 800 mm

Desk quantity: 46 desks

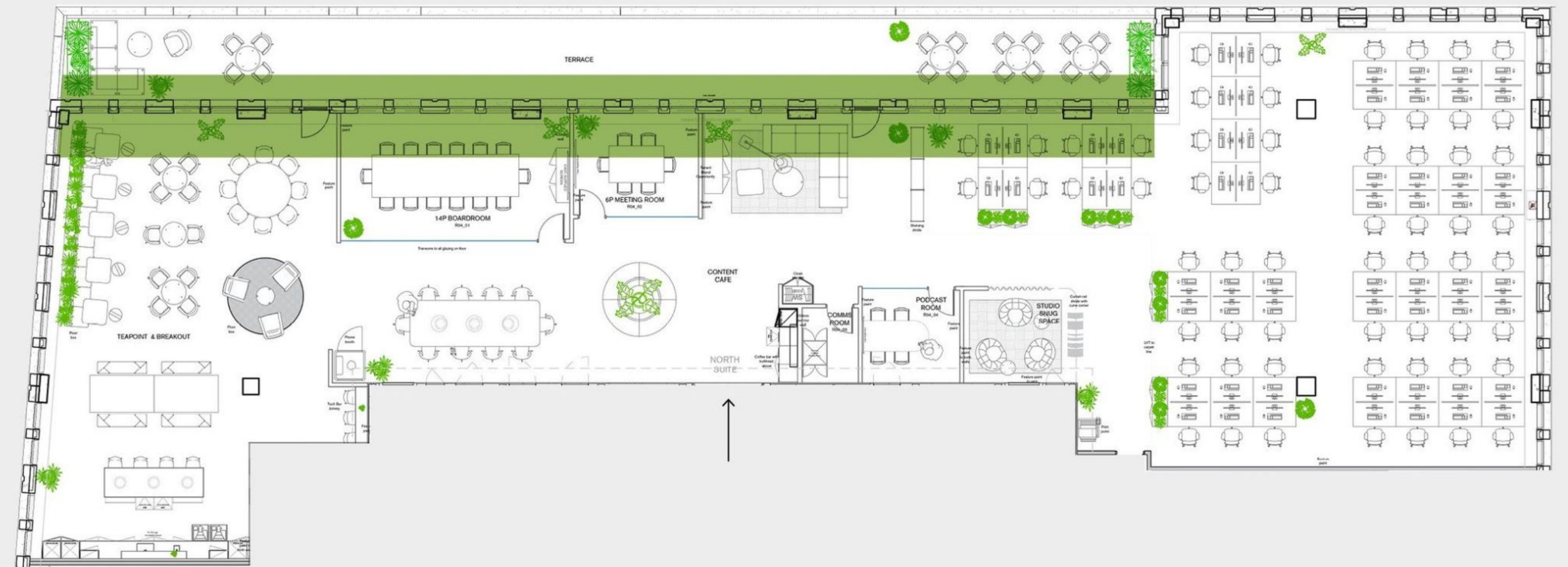
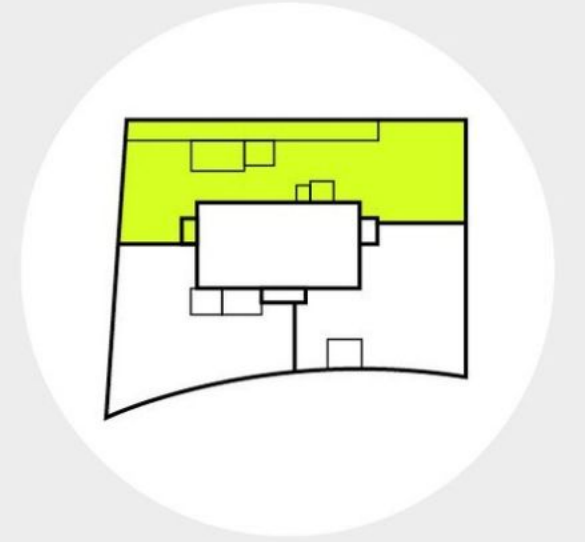
Floor area: 4,560 sqft

- 10 seat board room
- 8 seat meeting room
- Kitchenette and breakout areas
- Touchdown zones
- Fully connected
- Ability for own reception desk
- Fully connected
- Exceptional natural light
- Access to bike, shower and changing facilities



North Suite

Desk size:	1400 x 800 mm
Desk quantity:	60 desks
Floor area:	5,977 sq ft
Private terrace:	1,009 sq ft (furnished)



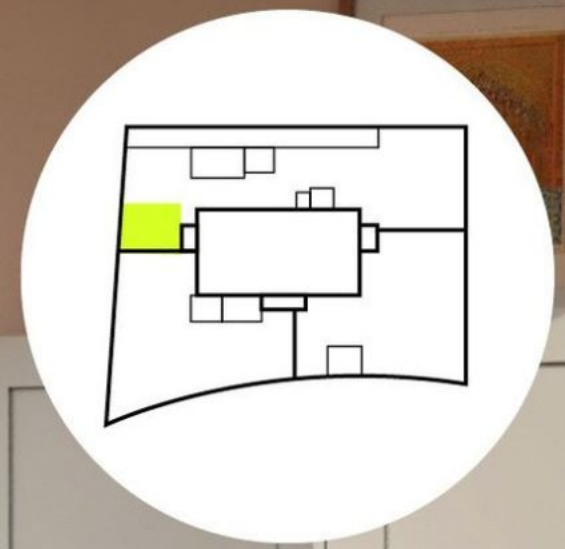
- 14 seat Board room
- 2 x 4-6 seat meeting rooms
- Podcast/informal meeting room
- Kitchenette and breakout areas
- Touchdown zone
- Client coffee bar
- Fully connected
- 1,000 sq ft furnished private terrace
- Exceptional natural light throughout
- Access to bike, shower and changing facilities



Indicative view of North Suite reception area



Indicative view of North Suite board room



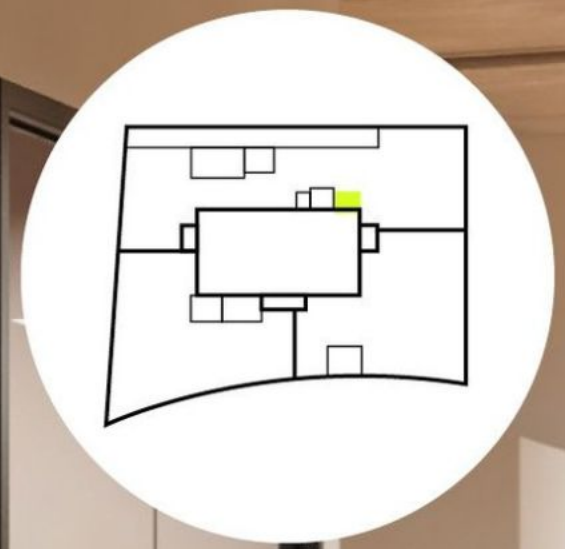
Indicative view of North Suite kitchen area



Indicative view of West Suite breakout area

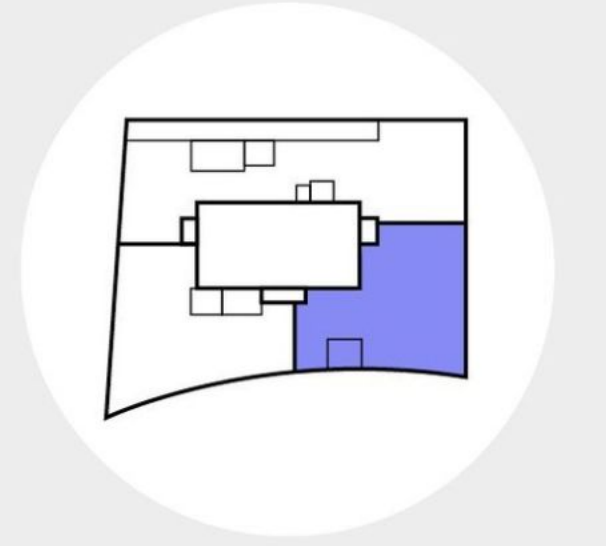


View of North Suite terrace area



Indicative view of North Suite studio area

East Suite



Desk size: 1400 x 800 mm

Desk quantity: 44 desks

Floor area: 4,379 sqft

- 10 seat board room
- 2x 4-8 seat meeting rooms
- Kitchenette and breakout areas
- Touchdown zones
- Fully connected
- Ability for own reception desk
- Fully connected
- Exceptional natural light
- Access to bike, shower and changing facilities





Indicative view of East Suite meeting area



Indicative view of East Suite board room



Indicative view of East Suite breakout area

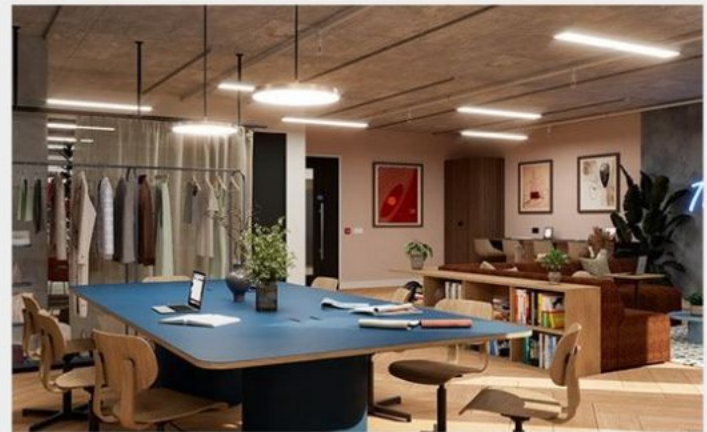
West Suite

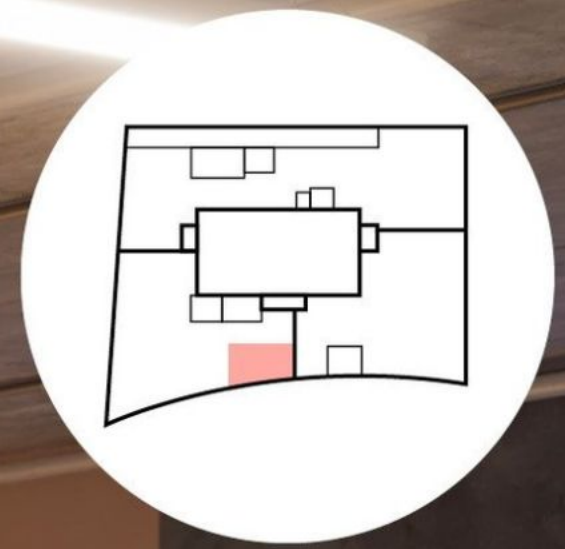
Desk size: 1400 x 800 mm

Desk quantity: 46 desks

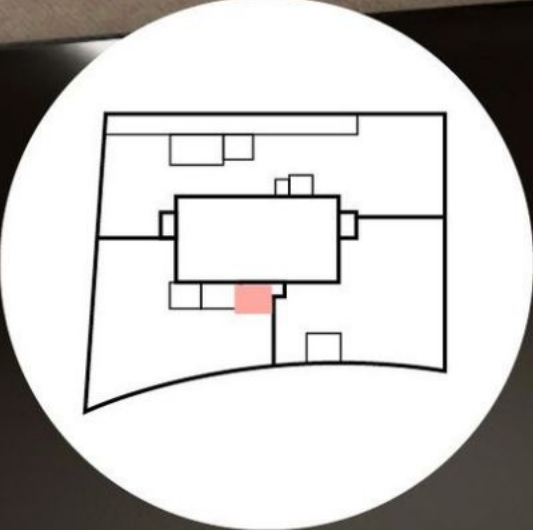
Floor area: 4,560 sqft

- 10 seat board room
- 8 seat meeting room
- Kitchenette and breakout areas
- Touchdown zones
- Fully connected
- Ability for own reception desk
- Fully connected
- Exceptional natural light
- Access to bike, shower and changing facilities

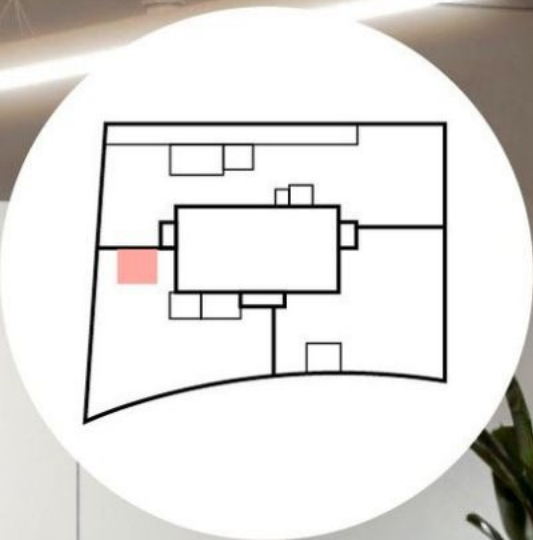




Indicative view of West Suite meeting area



Indicative view of West Suite board room



Indicative view of West Suite break out area