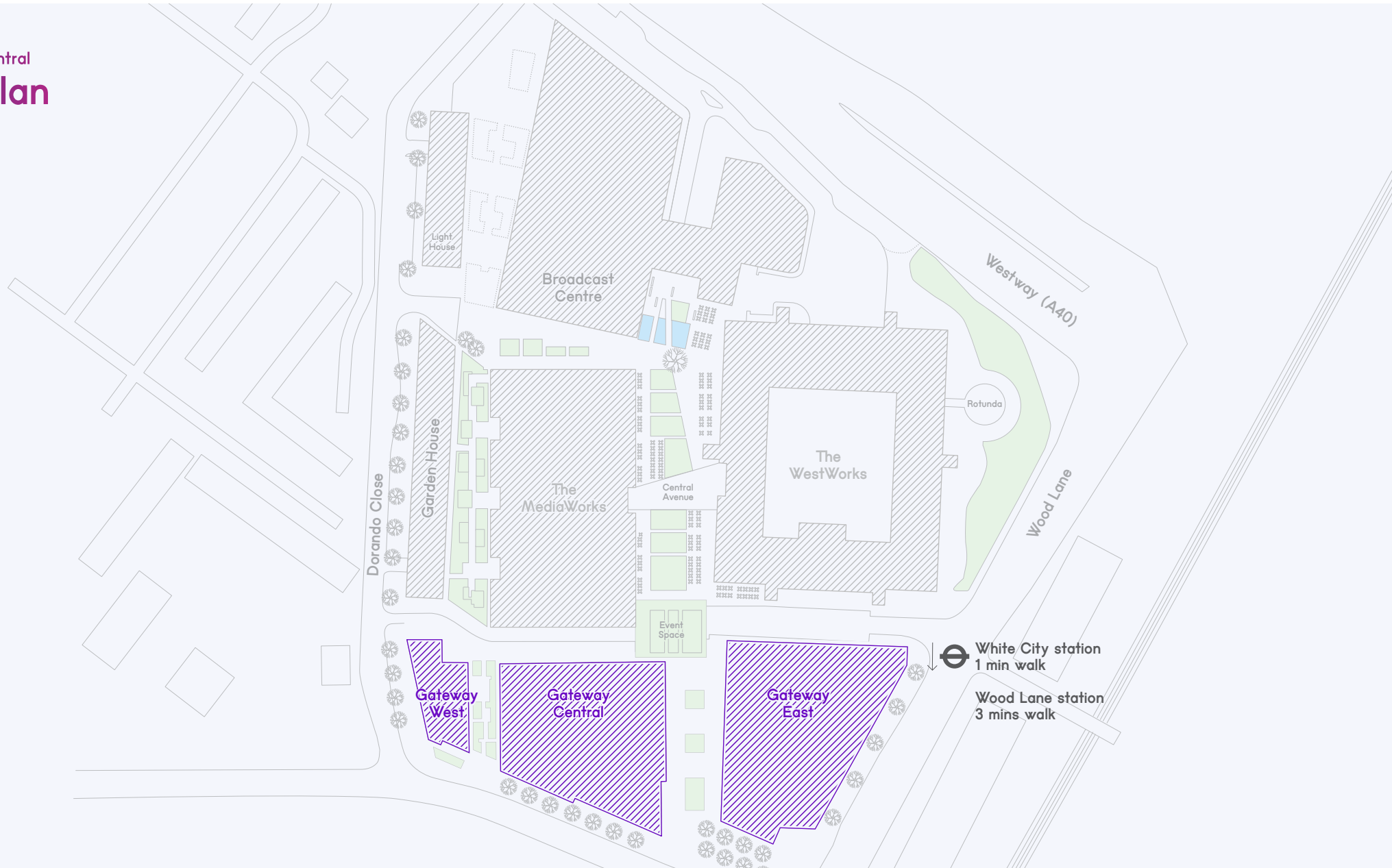


WHITE
CITY
PLACE

GATEWAY CENTRAL

Availability 26,000 – 157,000 sq ft

Gateway Central
Site Plan



Just off Wood Lane



Connect with a creative campus



4th floor terrace



The Building

Gateway Central is a ten-storey building bordered by tree-lined avenues and energetic shared spaces. Five floors are pre-let to L'Oréal as their new HQ, with 157,212 sq ft office space available.

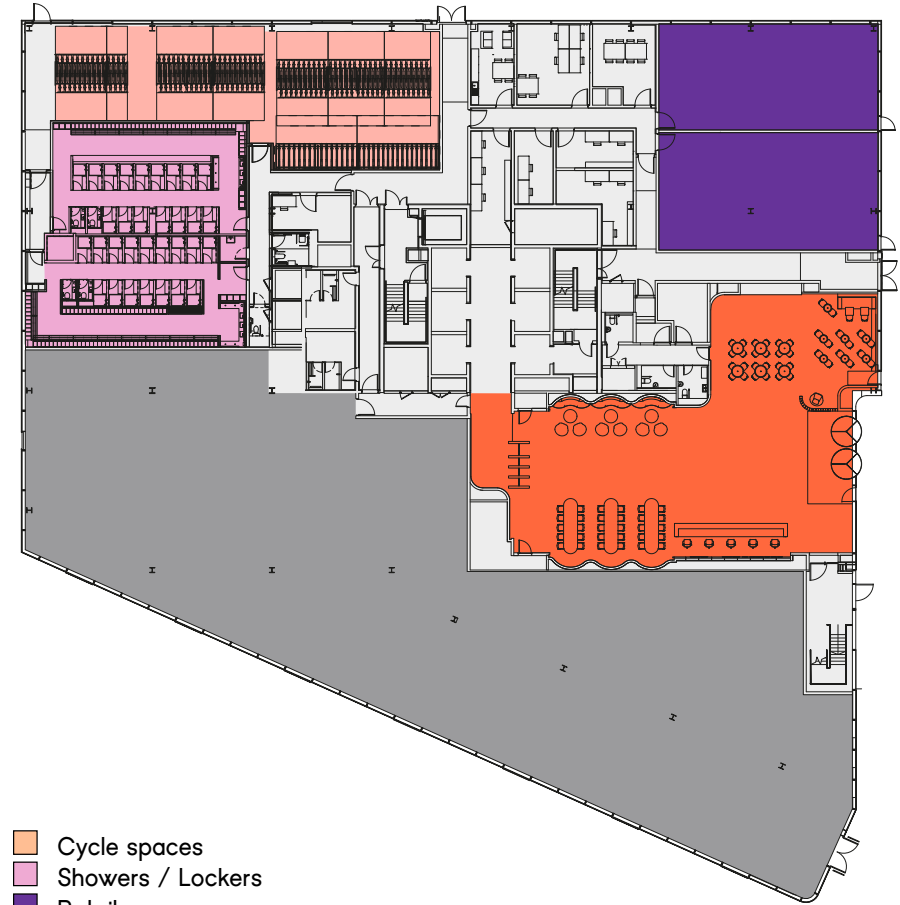
- 6,000 sq ft terrace on the 4th floor
- 293 cycle spaces with 293 lockers and 33 showers
- 2.9m minimum floor to ceiling height
- BREEAM Outstanding
- Wired Score Platinum
- Occupational density 1:8 sq m
- Four pipe fan coil air conditioning
- LED lighting with presence detectors
- Diverse incoming power

Gateway Central is set to be completed by Q3 2022.

Gateway Central
Reception



Ground floor



- Cycle spaces
- Showers / Lockers
- Retail
- Reception / Cafe
- L'Oréal Academy

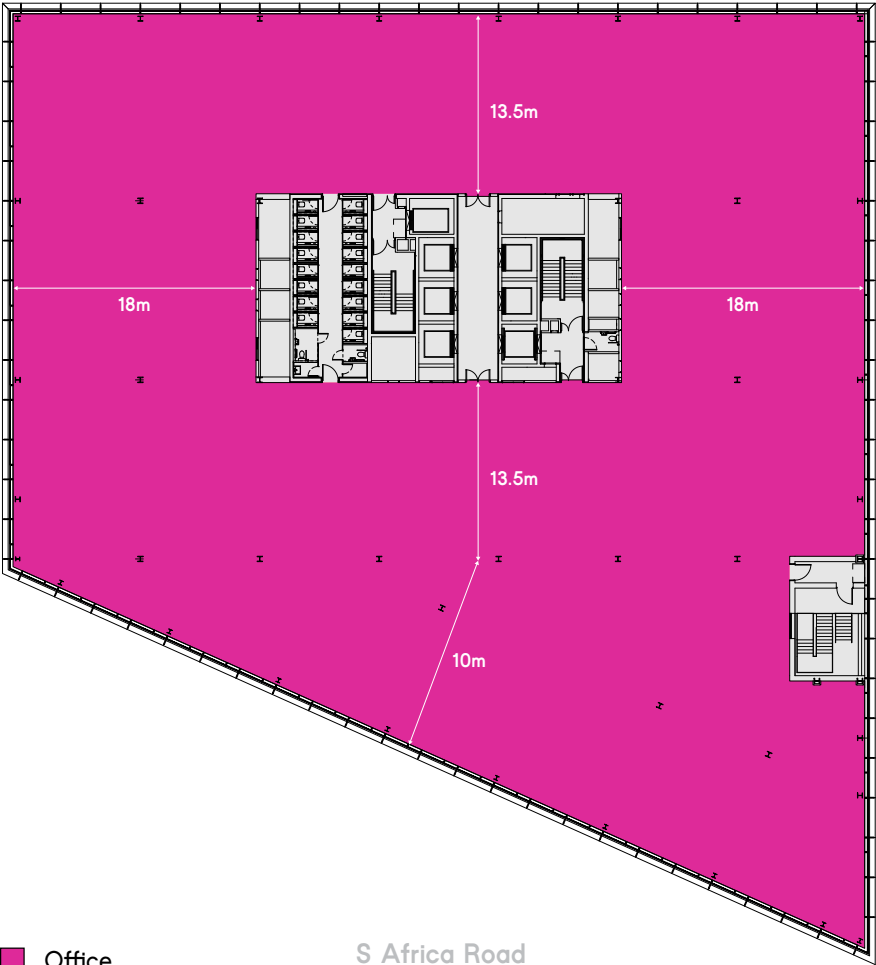
S Africa Road

Areas

Floor	sq ft	Occupiers
6 to 10	110,990	L'Oréal
5	27,797	Available
4	27,204	Available
Terrace	6,000	
3	34,490	Available
2	34,490	Available
1	34,463	Available
Reception	5,270	
Retail	2,715	
Basement	293 cycle spaces 293 lockers 33 showers 12 car parking spaces	
Office total	157,212	

The areas listed are the approximate net internal areas.
All areas will be subject to on-site verification on completion of the scheme.

Typical floors 1–3



Contacts

Cushman & Wakefield

Andy Tyler | Joel Randall | Charles Dady | Henry Harrison
0207 935 5000

Knight Frank

Ian McCarter | Jonny Lee | Roddy Abram | Andy Nixon
0207 629 8171

STANHOPE

