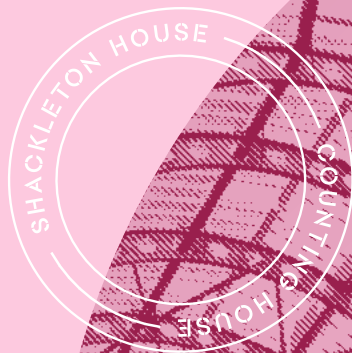




HAYS-GALLERIA.COM



[Introduction](#)

[Location](#)

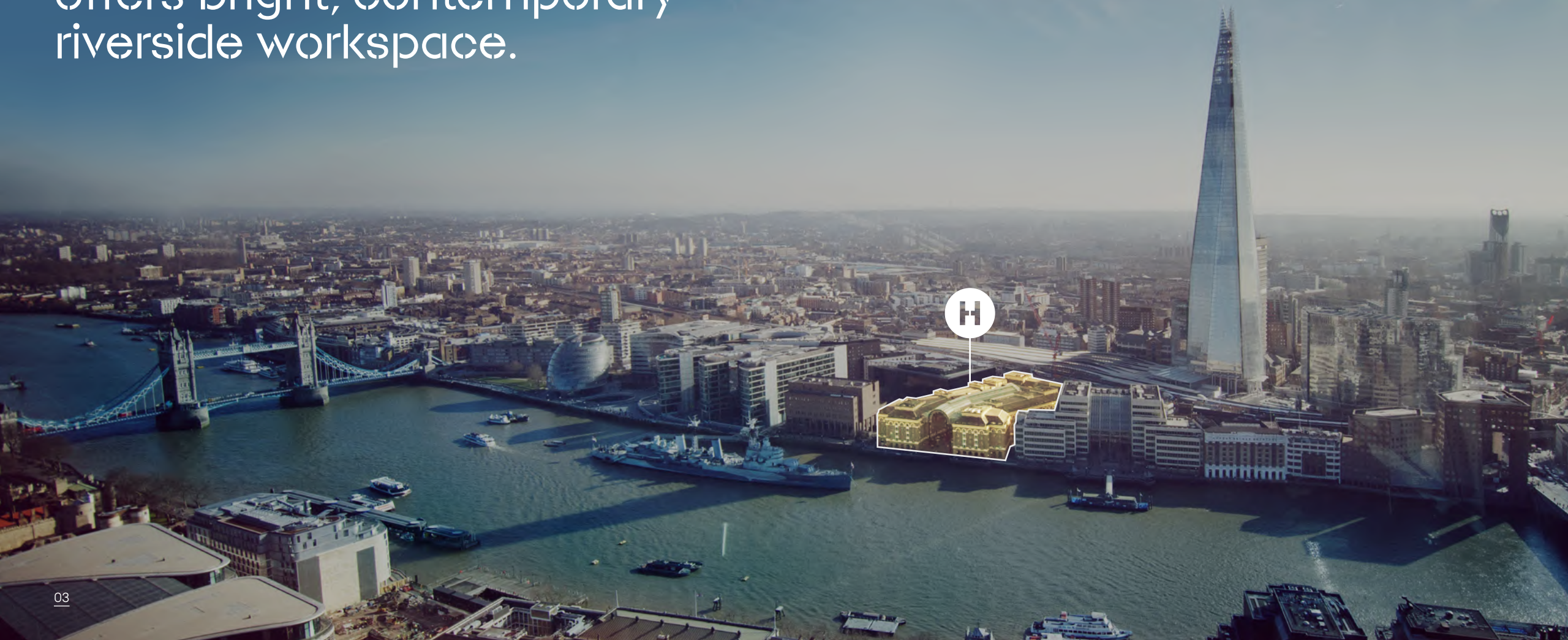
[Campus](#)

[Availability](#)

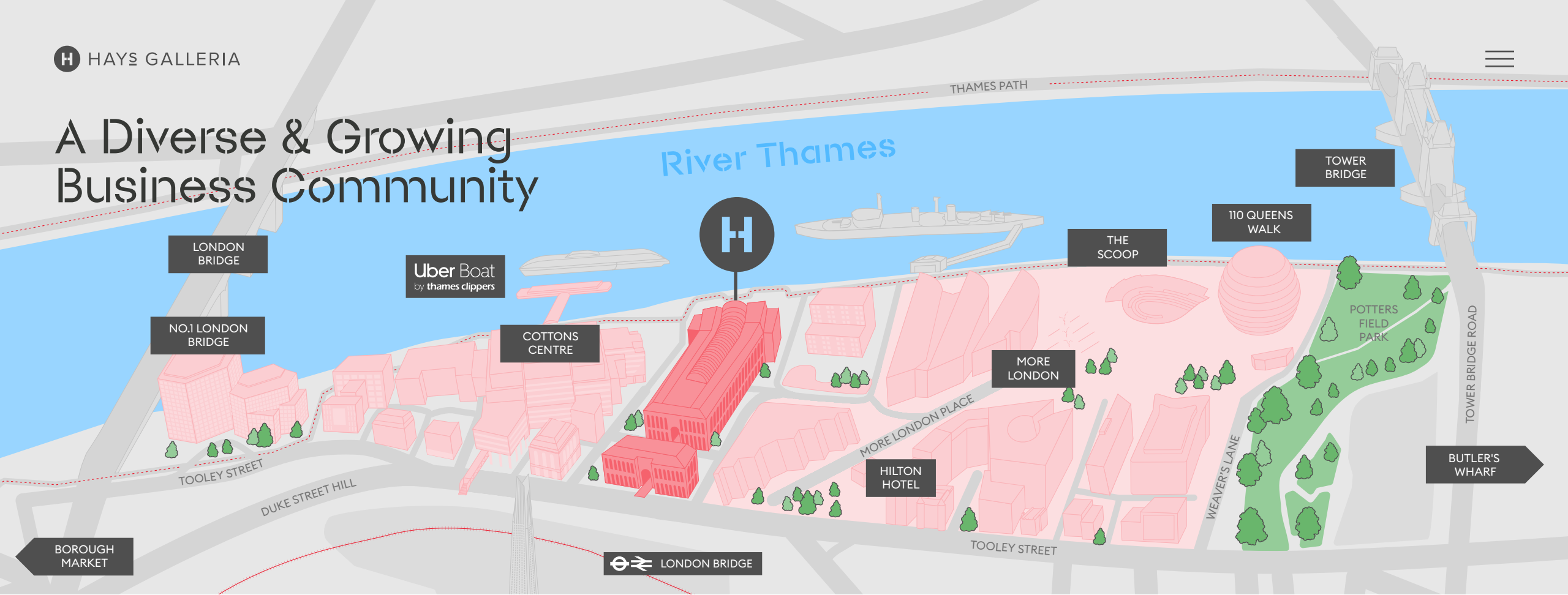
[Specification](#)

[Contact](#)

Positioned on the doorstep
of London Bridge, Hay's Galleria
offers bright, contemporary
riverside workspace.



A Diverse & Growing Business Community



Aēsop®

CHARLES TYRWHITT
JERMYN STREET LONDON

terra firma

Jacobs

Z O P A

axs

southeastern

H|M Hilson
Moran
part of the Tyréns Group

Kobalt



CLA

lightspeed



NORTON ROSE FULBRIGHT



ANNINGTON

abpi

pwc

Social
Enterprise UK

EY

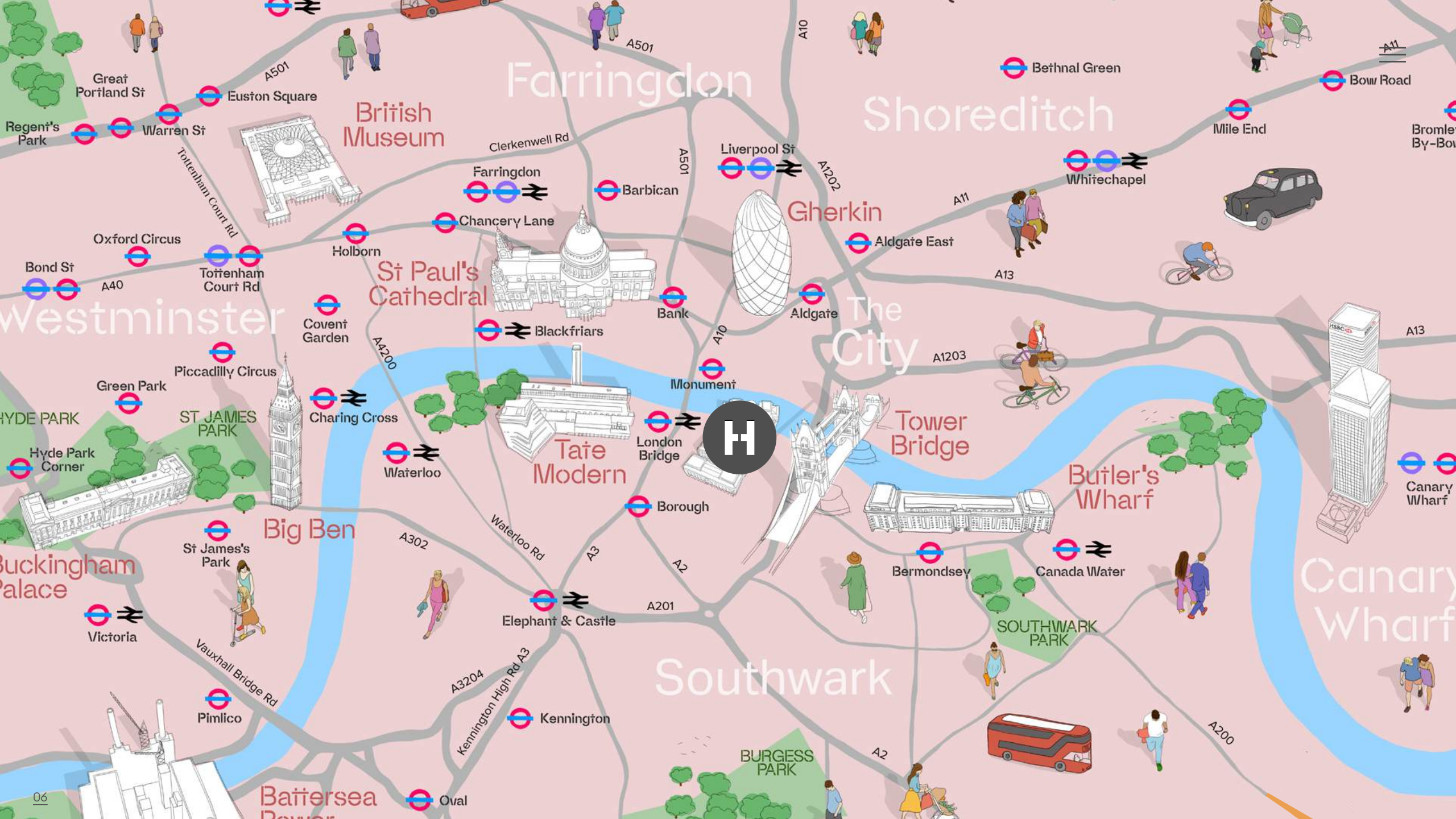
IDX™

AVON

EASTALPHA

THE LOCATION





Farringdon

Shoreditch

Westminster

The City

Southwark

Canary Wharf

British Museum

St Paul's Cathedral

Tate Modern

Tower Bridge

Butler's Wharf

Big Ben

Buckingham Palace

BURGESS PARK

SOUTHWARK PARK

Battersea



Indulge the Taste Buds

Over a 140 of the Capital's finest eateries and drinking holes all lie within a 10 minute walk.

Eat & Drink

140+ Bars & Restaurants
Within a 5 minute walk



Pizza Pilgrims



José



1751 Distillery

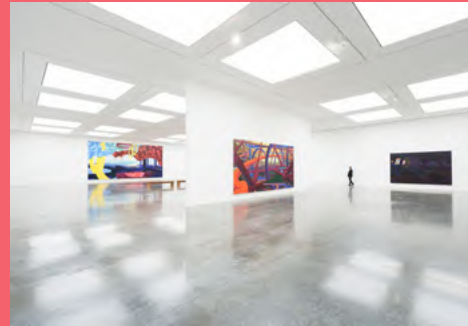
Brimming with Culture

From the Tate Modern to The White Cube Gallery, The London Bridge Theatre to The Globe, Hay's Galleria is surrounded by the very best London has to offer.

Art



Fashion and Textile Museum



The White Cube Gallery



& Culture



Tate Modern

7 Galleries & Theatres

Within a 5 minute walk

An Eclectic Offering

Borough Market, Bermondsey Street, Maltby Street Market and Southbank are all in immediate proximity.



Borough Market



Maltby Street Market

Markets



Vinegar Yard



3 Food Markets

Within a 5 minute walk

Brilliantly Connected

Hay's Galleria benefits hugely from its proximity to London Bridge station.

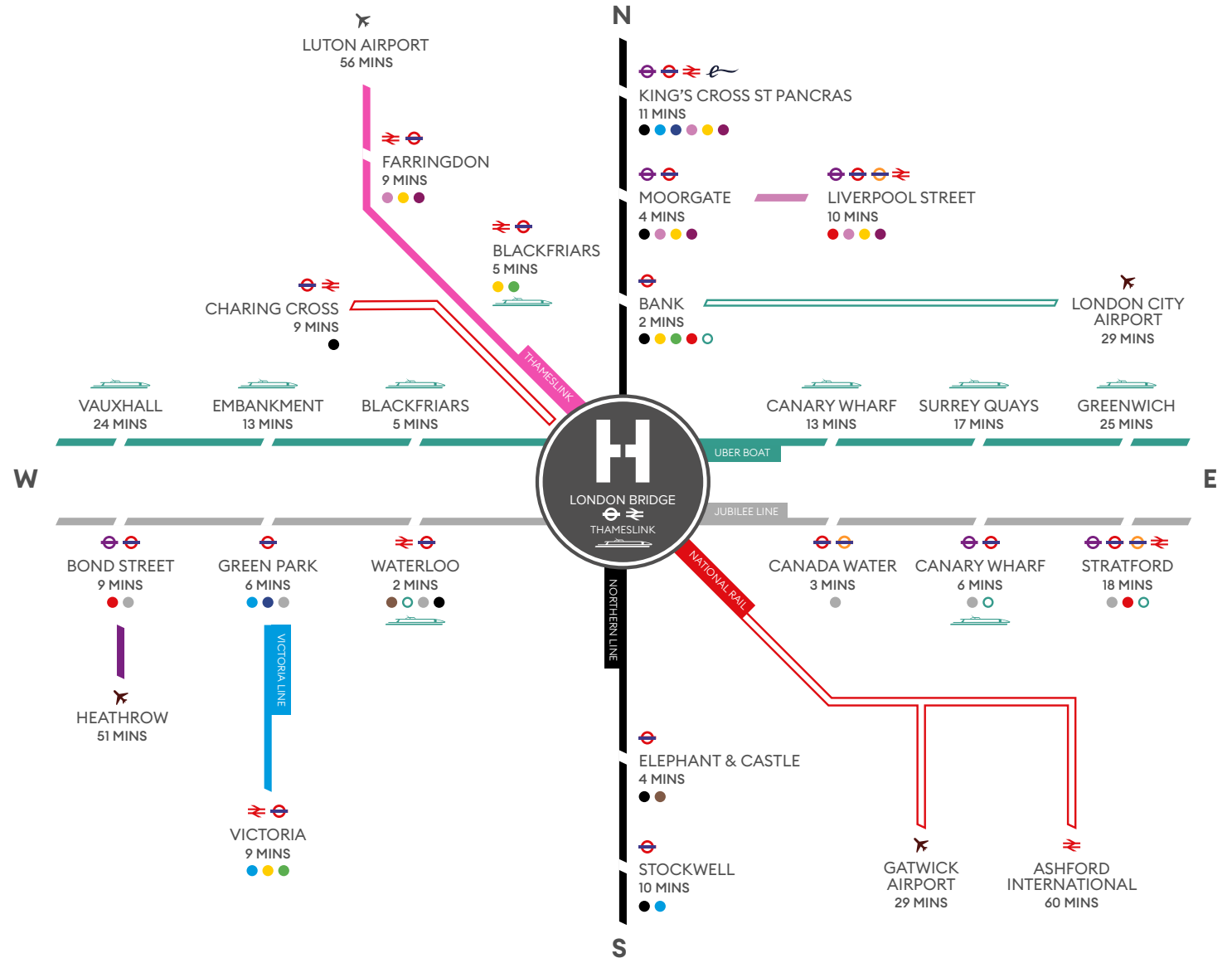
Being directly opposite the station allows rapid access to all corners of London and beyond.

A train every 4–5 minutes from London Bridge to Farringdon station.

London Underground & Mainline Services

Central	District	DLR	National Rail
Jubilee	Northern	Thameslink	Overground
Victoria	Hammersmith & City	Thames Clippers	
Piccadilly	Metropolitan	Elizabeth Line	
Circle	Bakerloo	TFL	

The Jubilee Line is the only line to intersect every London Underground Line.
All times sourced from Transport for London and Google Maps.





THE CAMPUS



Steeped in History

Built in the 1850s, Hay's Wharf took deliveries from ships from all over the world and the area became known as the "Larder of London".



Ships being unloaded at Hay's Wharf ▲



▲ Workers receiving shipping crates to be stored in the warehouses

1920



Hay's Wharf Cartage Company Ltd van along a snowy A30, near Basingstoke, Hampshire.



▼ Russian sailors delivering gold to London



1927

1935



▲ Barges moored at Hay's Wharf



A World-Class Estate Brimming With Activity



London Bridge City is teeming with all-year-round festivals, markets and stunning events to satisfy the needs of everyone.

Ole & Steen ▼



▼ Tower Bridge



1751 ▲

▼ The Scoop





▲ View of the Galleria



View of Hay's Galleria ▲

An Exceptional Waterside Campus



Hay's Galleria is packed with food, drink and shopping opportunities. Fantastic on and off-site amenities give tenants a truly rare variety of choice and convenience.



AVAILABILITY



Availability

SHACKLETON HOUSE

38,680 SQ. FT

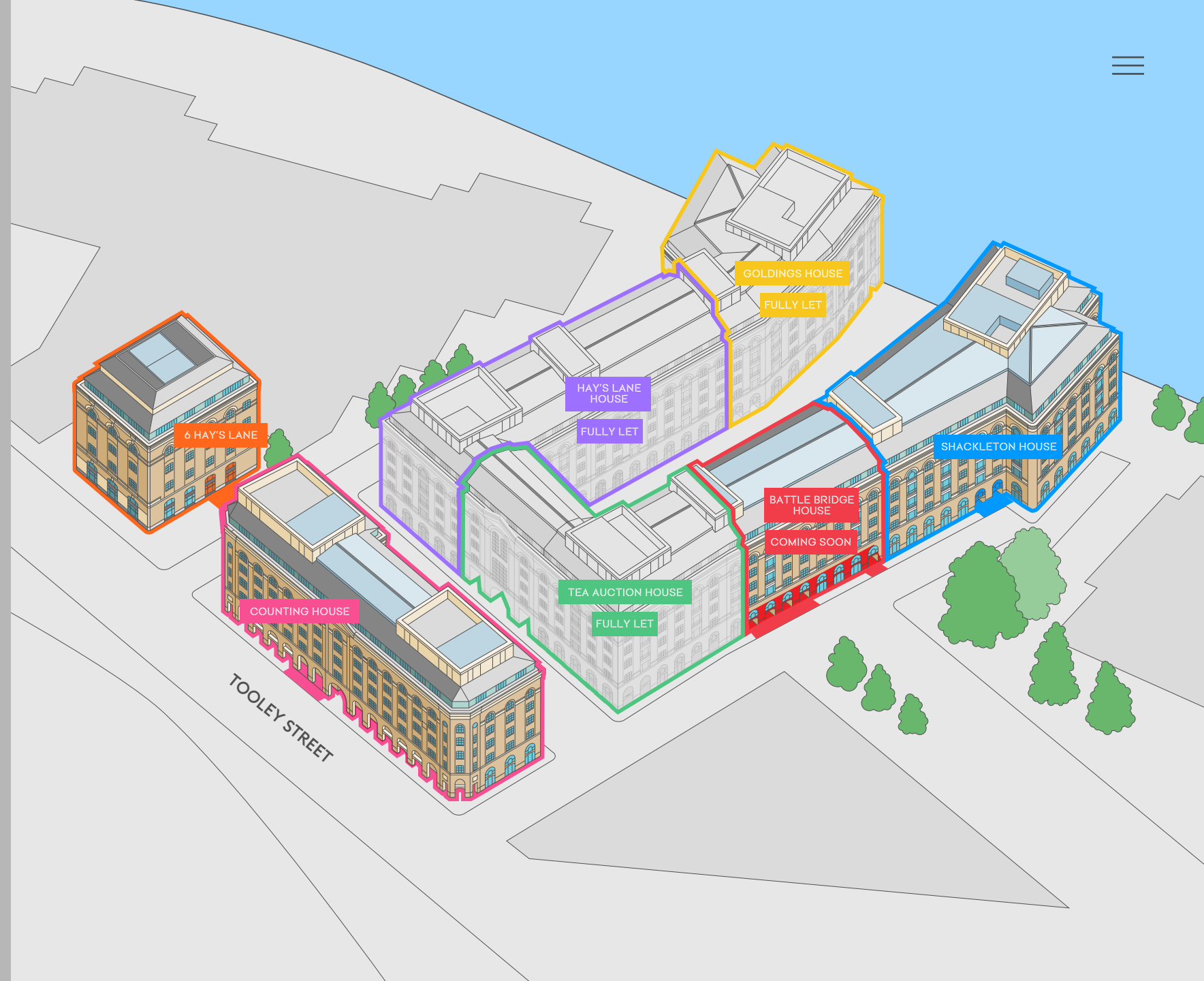
COUNTING HOUSE

20,778 SQ. FT

6 HAY'S LANE

10,938 SQ. FT

Contemporary Warehouse Office Space



London's Most Exciting Riverside District



FLOOR	SHACKLETON HOUSE	COUNTING HOUSE	6 HAY'S LANE
5	LET	LET	3,340
4	13,080	LET	LET
3	13,000	10,903	LET
2	LET	10,685	3,808
1	12,600	LET	3,790
TOTAL (SQ. FT)	38,680	20,778	10,938

Availability

SHACKLETON HOUSE



LEVEL 5: **LET**

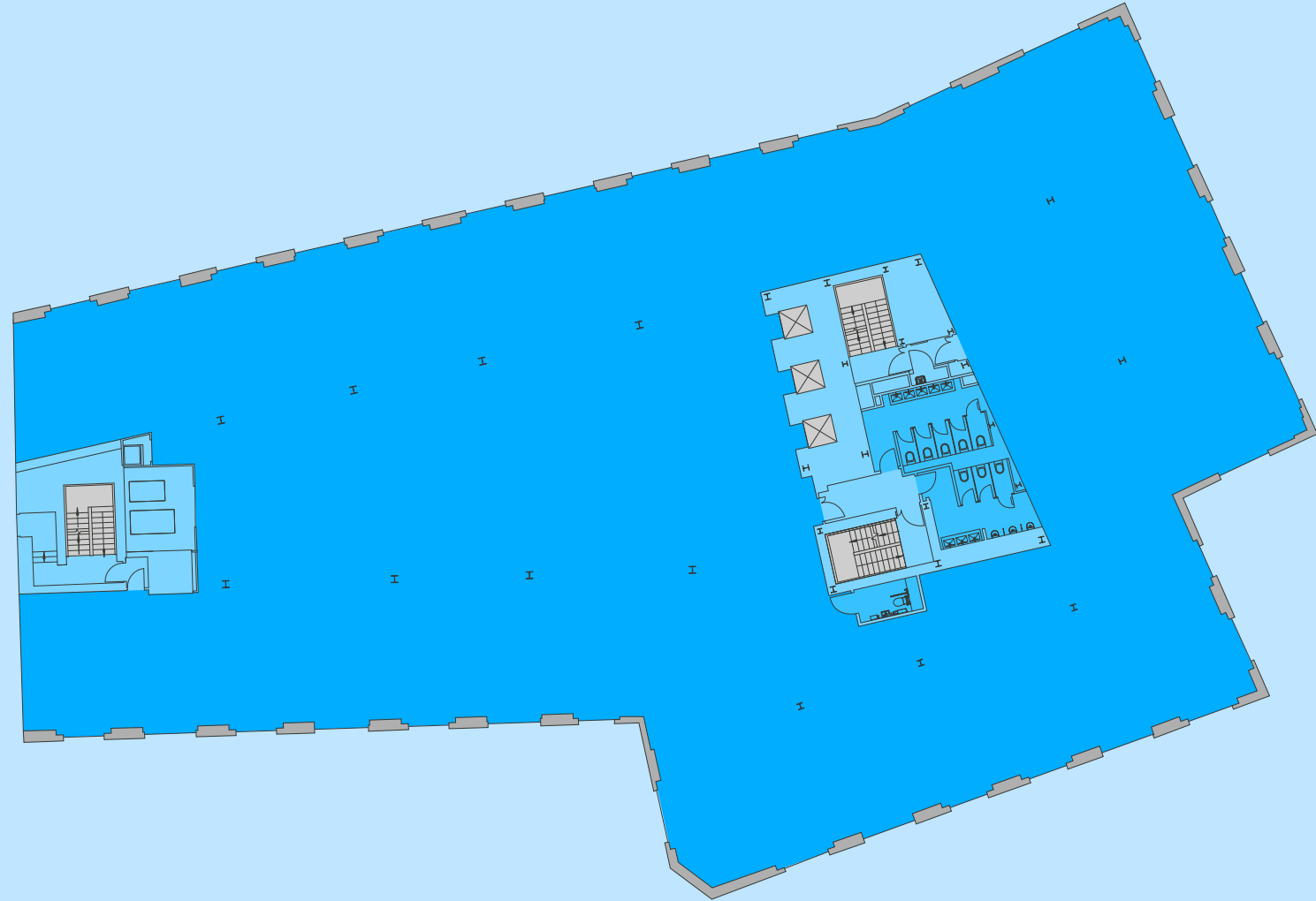
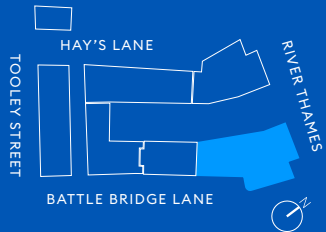
LEVEL 4: **13,080 SQ FT**

LEVEL 3: **13,000 SQ FT**

LEVEL 2: **LET**

LEVEL 1: **12,600 SQ FT**

Typical Floor



- Office
- Core
- Lifts / Stairs
- WC

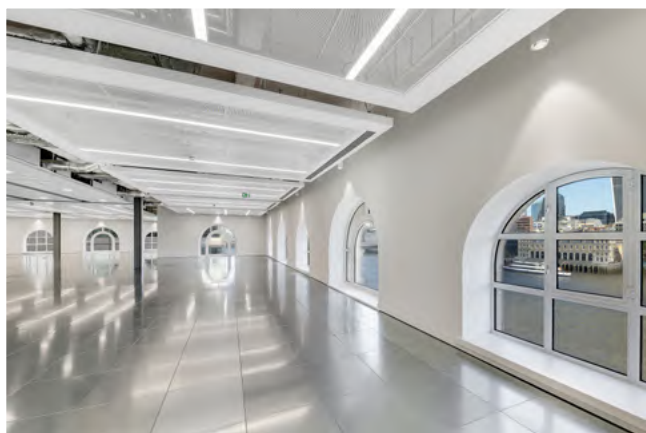
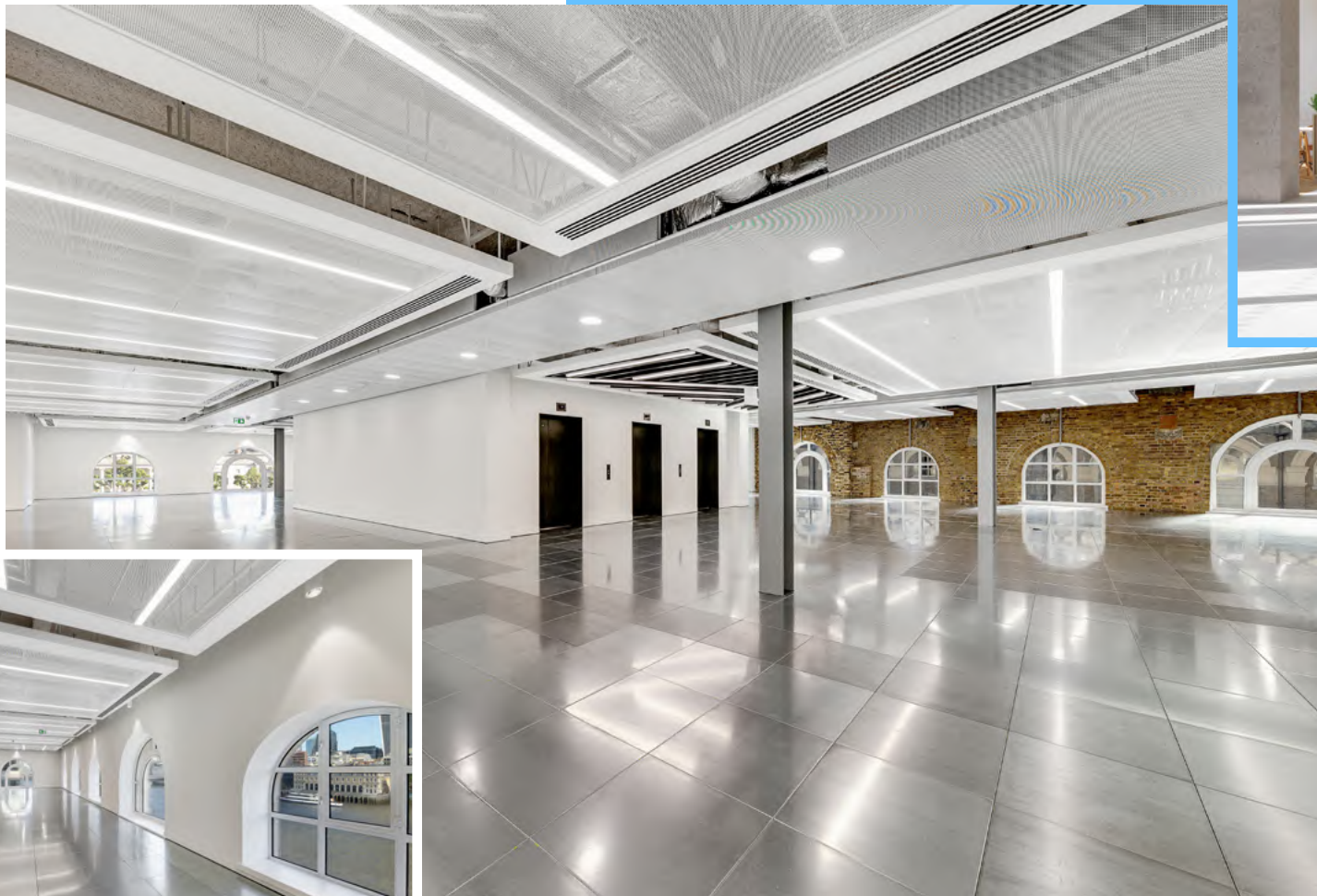
Indicative floorplan



[View online stacker](#)







▲ Level 4 CAT A workspace



▲ Indicative CGI view of the new reception

SHACKLETON HOUSE

Q1 2025



▲ Indicative CGI view of the new reception





Stunning Views

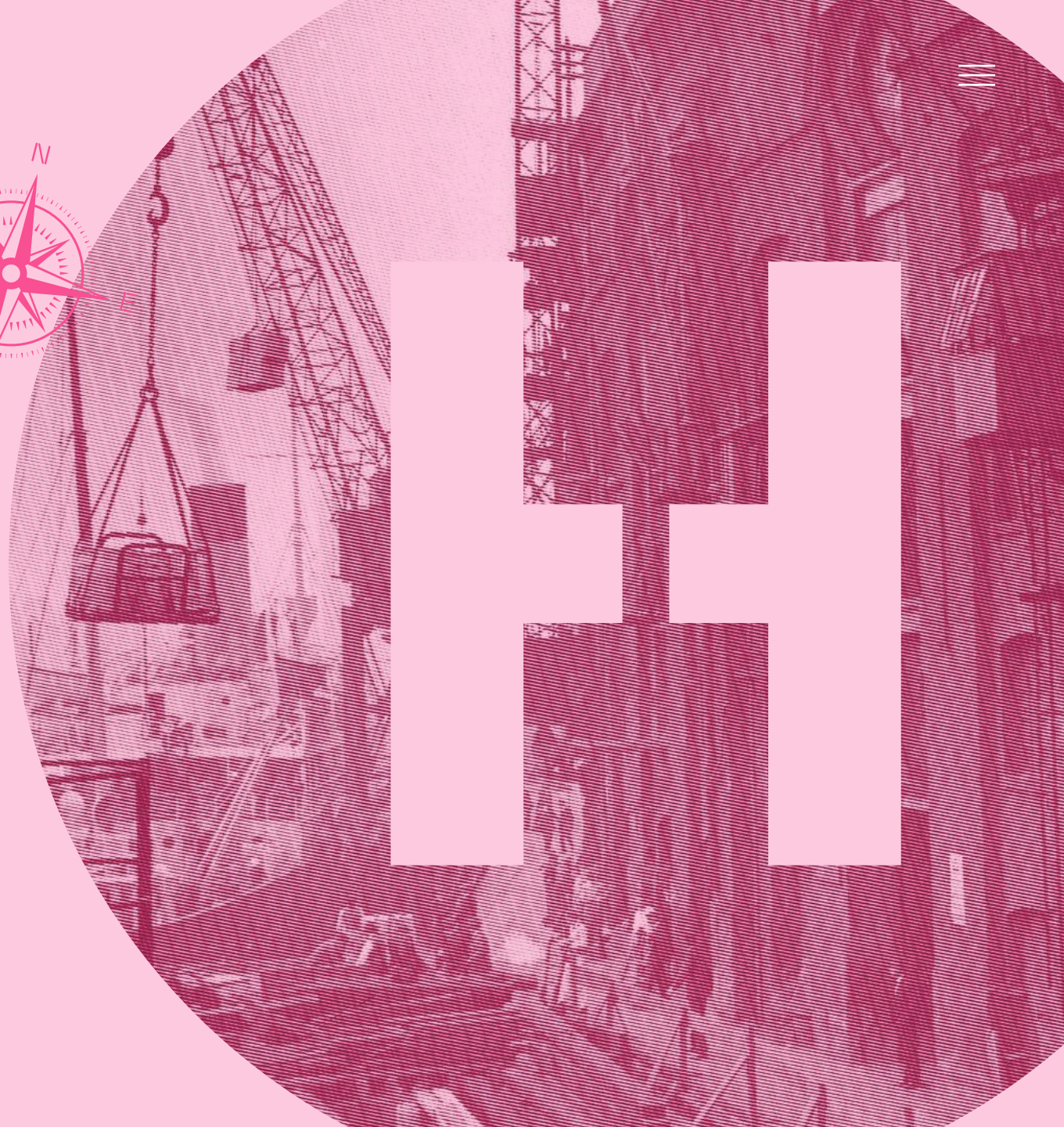
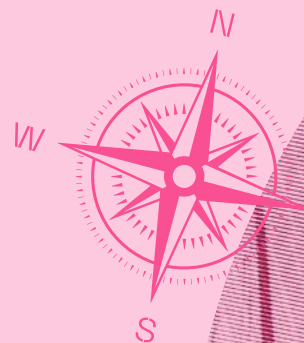
Positioned directly by The River Thames, Shackleton House offers stunning panoramic riverside views. In view you can see HMS Belfast, Tower Bridge and the City.



▲ The Queen's Walk



COUNTING HOUSE



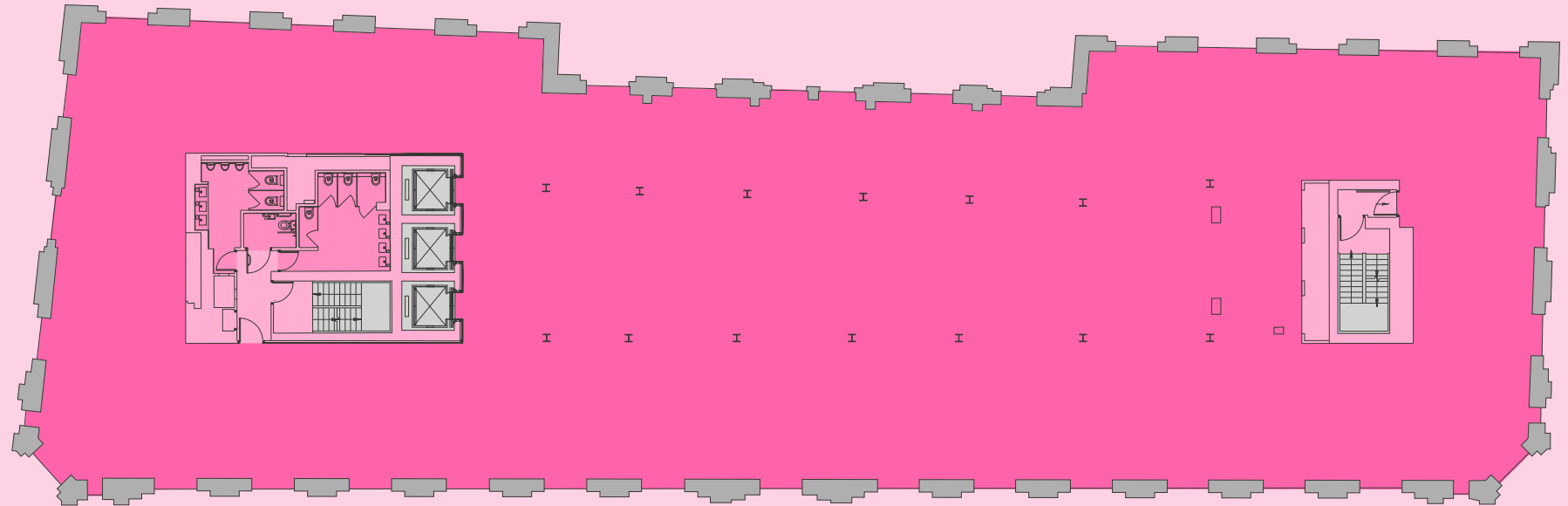
LEVEL 5: **LET**

LEVEL 4: **LET**

LEVEL 3: **10,903 SQ FT**

LEVEL 2: **10,685 SQ FT**

LEVEL 1: **LET**

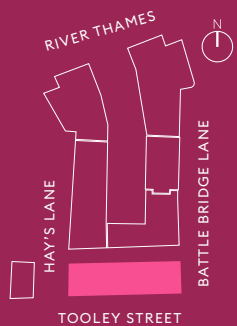


- Office
- Core
- Lifts / Stairs
- WC

Indicative floorplan

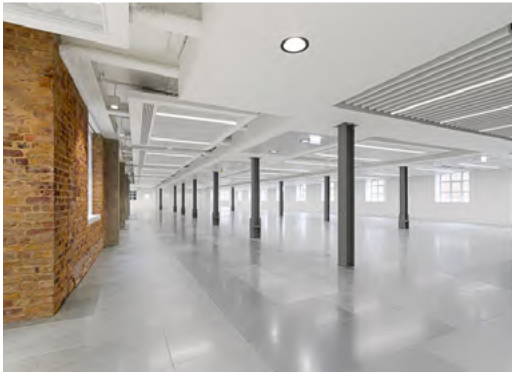


[View online stacker](#)



Contemporary & Flexible Workspace

Fronting onto Tooley Street, Counting House boasts bright, light and modern workspace with exposed brickwork and feature columns, positioned opposite London Bridge Station.



▲ CAT A workspace

▼ Flooded with natural light



Within an Historical Context

Summary Specification



Car parking
available



New end of trip
facilities



Occupancy
ratio 1:8*



4-Pipe fan coil air
conditioning



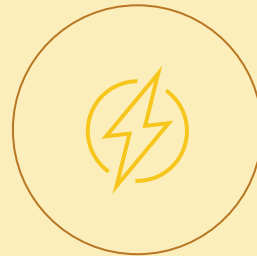
Heritage
features



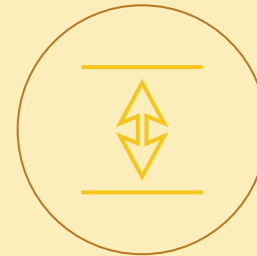
Riverside
campus



Openable
windows



100% renewably
generated
electricity



3m floor-to-soffit
height



EPC B

*Bathroom occupancy ratio 1:10

Enquiries



Tim Plumb
+44 (0) 7768 146 280
tim.plumbe@cushwake.com

James Taylor
+44 (0) 7899 843 767
james.taylor@cushwake.com

Hector Macneal
+44 (0) 788 520 1163
hector.macneal@cushwake.com

Tom Fayers
+44 (0) 7973 821 247
tom.fayers@cushwake.com

A scheme by

**ST
MARTINS**

Whilst the statements contained in these particulars are given in good faith and as a general guide to the property they do not form any part of an offer or contract. Neither the lessor, or any person in the employment of Cushman & Wakefield has any authority to make or give any representation or warranty whatsoever in relation to this property. Interested parties must satisfy themselves by inspection or otherwise as to the correctness of these particulars. Q4 2024.


LONDON BRIDGE CITY