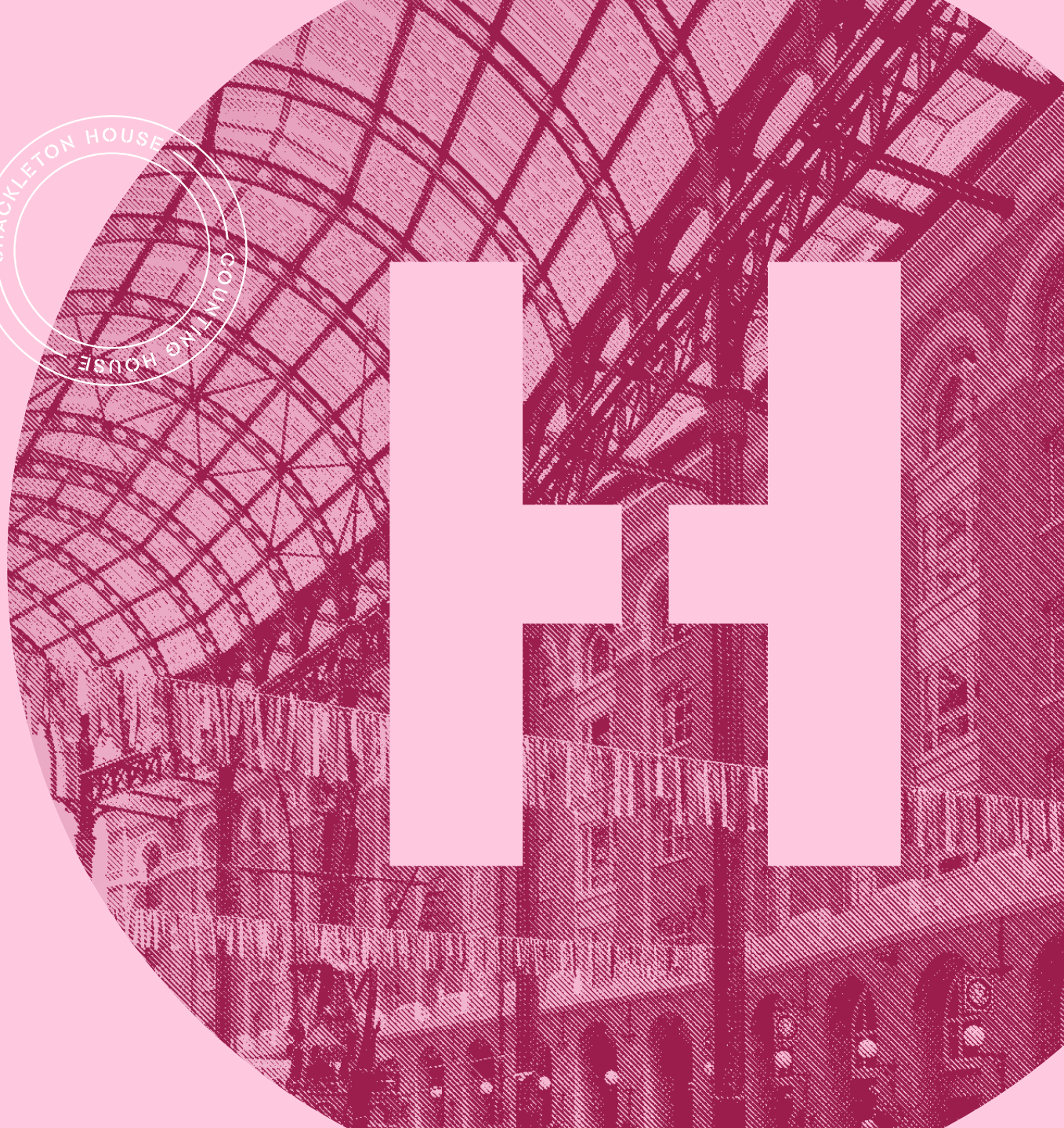
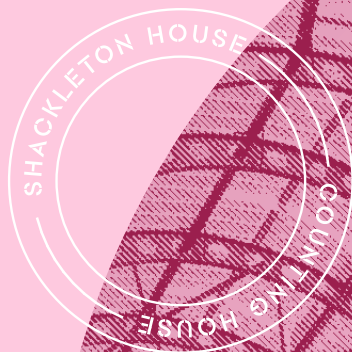




HAYS-GALLERIA.COM



[Introduction](#)

[Location](#)

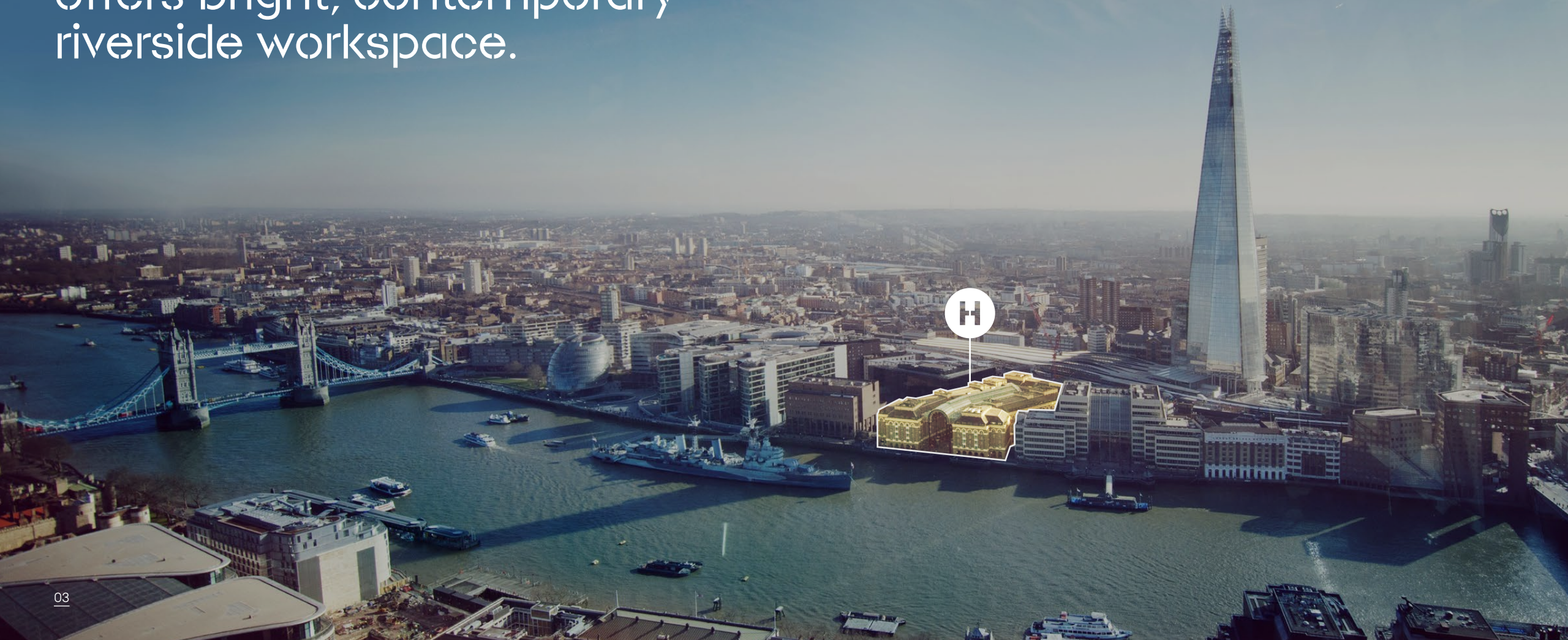
[Campus](#)

[Availability](#)

[Specification](#)

[Contact](#)

Positioned on the doorstep
of London Bridge, Hay's Galleria
offers bright, contemporary
riverside workspace.



A Diverse & Growing Business Community



Aēsop

CHARLES TYRWHITT
JERMYN STREET LONDON

terra firma

Jacobs

Z O P A

axs

southeastern

H|M Hilson
Moran
part of the Tyréns Group

Kobalt

Jägermeister

pwc

CLA

PRS
for music

NORTON ROSE FULBRIGHT

CCP

LOMBARD ODIER
LOMBARD ODIER DARIER HENTSCH

abpi

lightspeed

EY

IDX

AVON

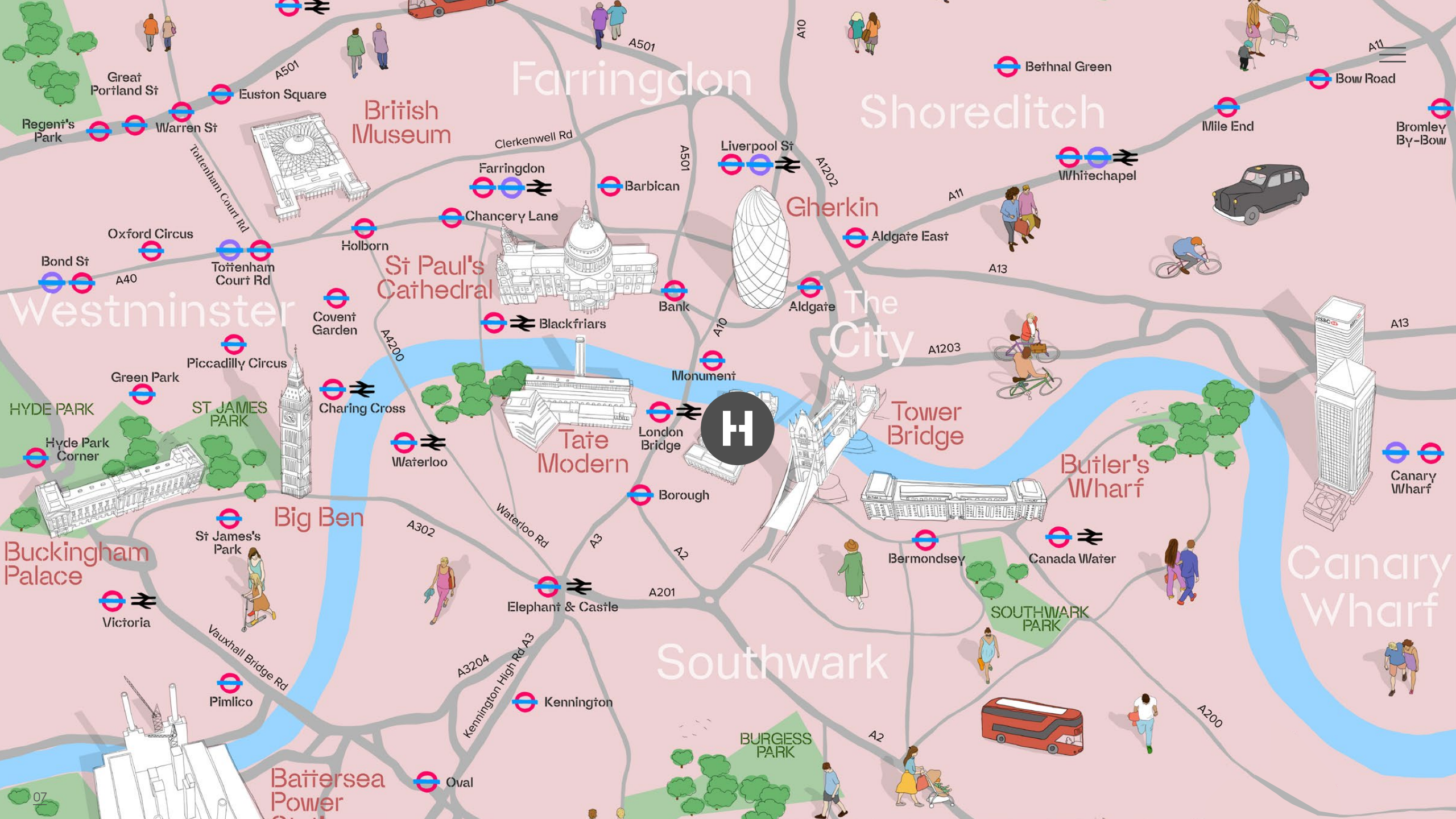
EASTALPHA

London's Most Exciting Riverside District



THE LOCATION





Indulge the Taste Buds

Over 140 of the Capital's finest eateries and drinking holes all lie within a 5 minute walk.

Eat & Drink

140+ Bars &
Restaurants

Within a 5 minute walk



Farmer J ▲



Flat Iron



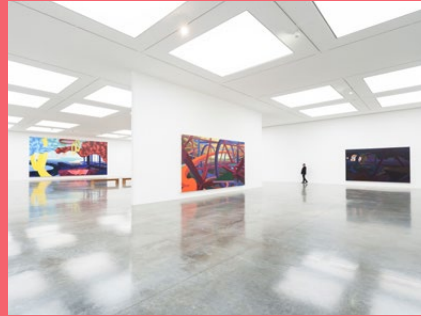
▲ Bread Ahead

Kin + Deum ▼



Brimming with Culture

From the Tate Modern to The White Cube Gallery, The London Bridge Theatre to The Globe, Hay's Galleria is surrounded by the very best London has to offer.



▲ The White Cube Gallery



The Bridge Theatre



Art & Culture



Fashion and Textile Museum ▲



Tate Modern

7 Galleries
& Theatres

Within a 5 minute walk

An Eclectic Offering

Borough Market, Bermondsey Street, Maltby Street Market and Southbank are all in immediate proximity.



Vinegar Yard ▲

Maltby Street Market



Markets



Borough Market ▲

3 Food Markets

Within a 5 minute walk



Brilliantly Connected

Hay's Galleria benefits hugely from its proximity to London Bridge station.

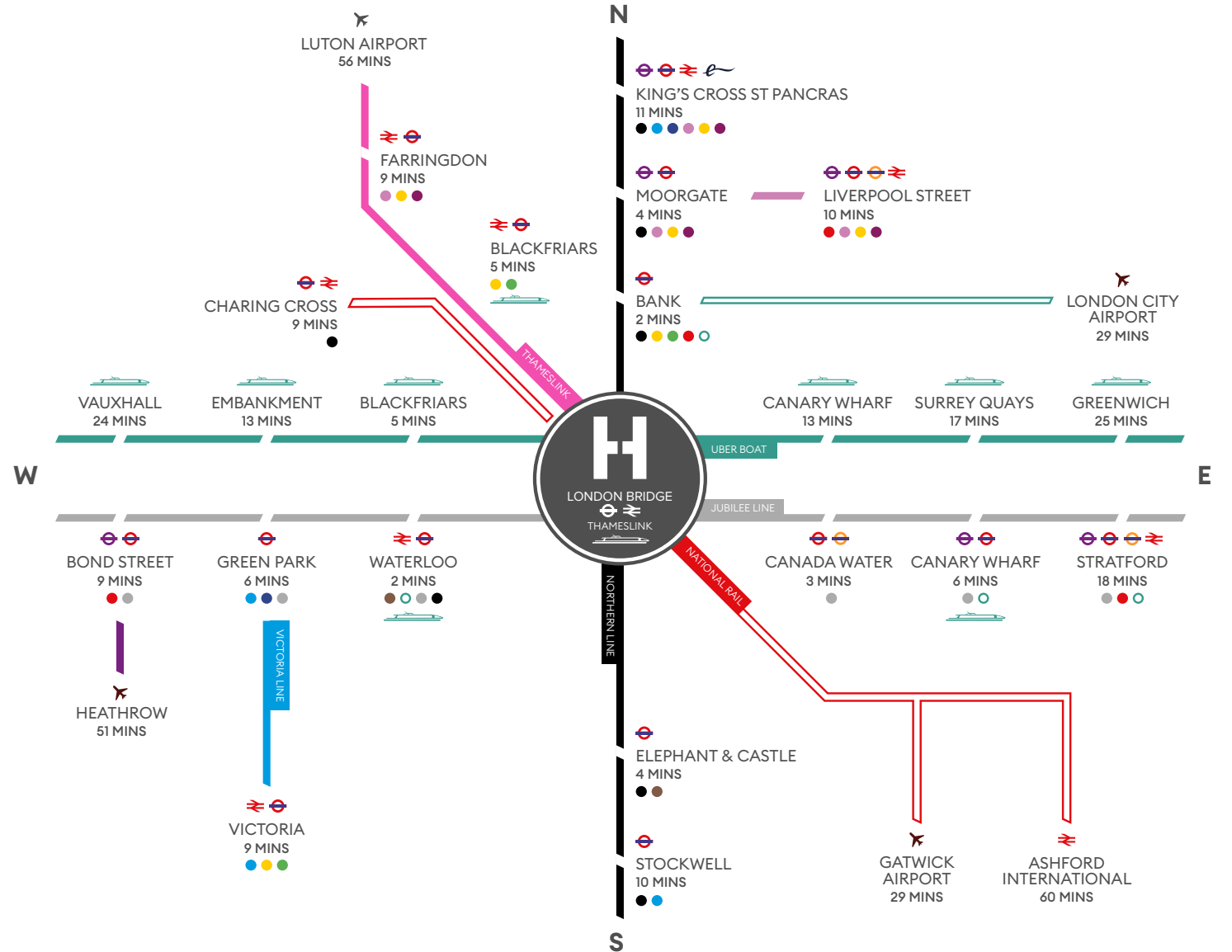
Being directly opposite the station allows rapid access to all corners of London and beyond.

A train every 4–5 minutes from London Bridge to Farringdon station.

London Underground & Mainline Services

● Central	● District	○ DLR	≡ National Rail
● Jubilee	● Northern	● Thameslink	≡ Overground
● Victoria	● Hammersmith & City	● Thames Clippers	
● Piccadilly	● Metropolitan	● Elizabeth Line	
● Circle	● Bakerloo	● TFL	

The Jubilee Line is the only line to intersect every London Underground Line.
All times sourced from Transport for London and Google Maps.





THE CAMPUS



Steeped in History

Built in the 1850s, Hay's Wharf took deliveries from ships from all over the world and the area became known as the "Larder of London".

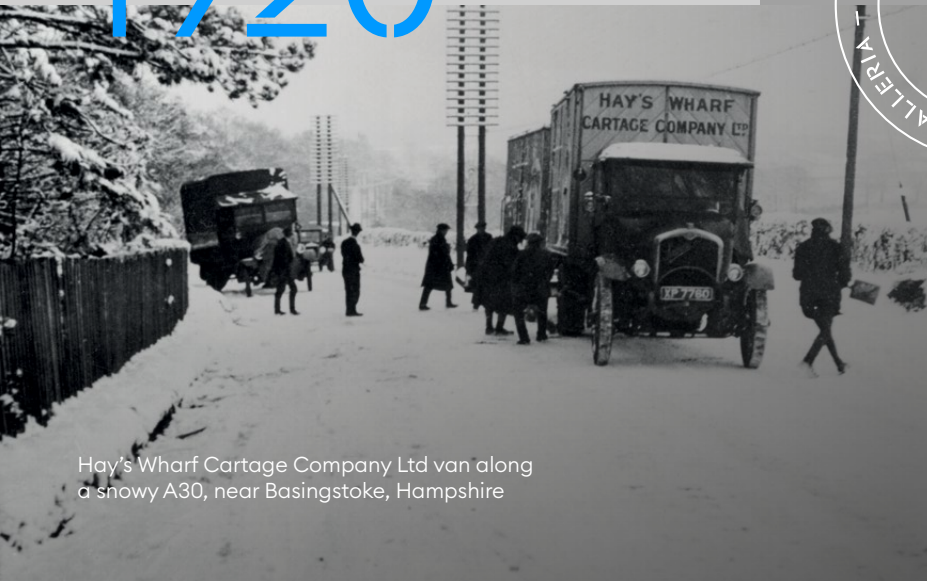


Ships being unloaded at Hay's Wharf ▲



▲ Workers receiving shipping crates to be stored in the warehouses

1920



Hay's Wharf Cartage Company Ltd van along a snowy A30, near Basingstoke, Hampshire



▼ Russian sailors delivering gold to London



1927

1935



▲ Barges moored at Hay's Wharf



A World-Class Estate Brimming With Activity

The estate is teeming with all-year-round festivals, markets and stunning events to satisfy the needs of everyone.



Ole & Steen ▼



▼ Tower Bridge



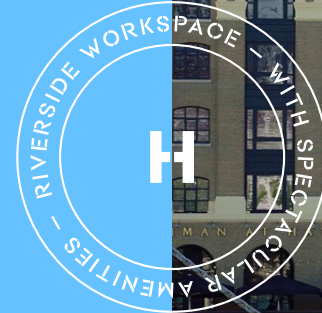
1751 Distillery ▲

▼ The Scoop



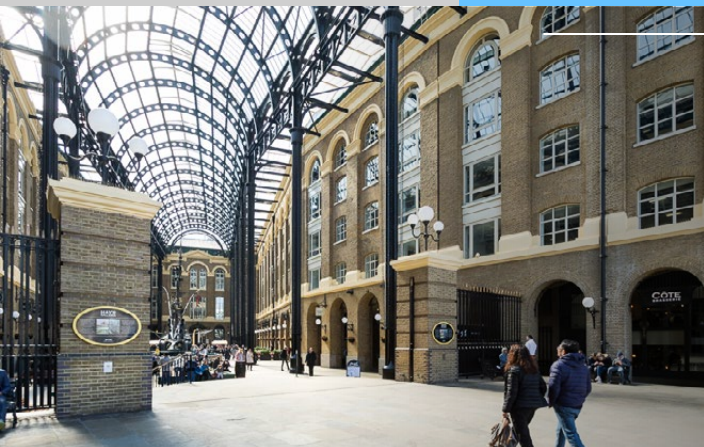


▲ View of the Galleria



View of Hay's Galleria ▲

An Exceptional Waterside Campus



Hay's Galleria is packed with food, drink and shopping opportunities. Fantastic on and off-site amenities give tenants a truly rare variety of choice and convenience.



AVAILABILITY



Contemporary Warehouse Office Space

Shackleton House

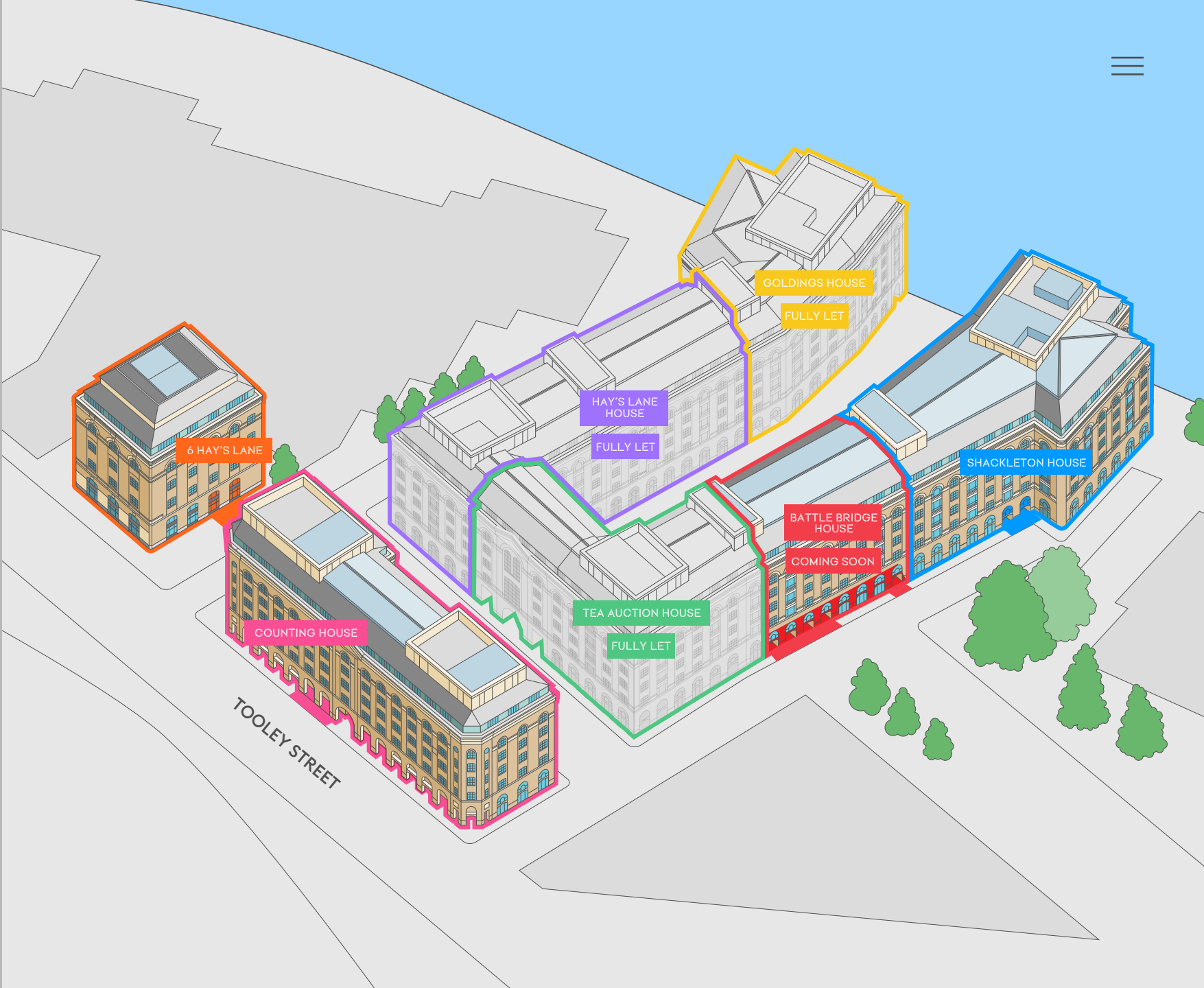
38,680 SQ. FT

Counting House

20,778 SQ. FT

6 Hay's Lane

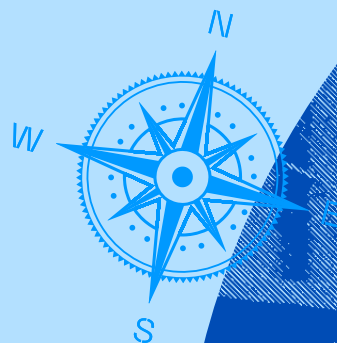
10,938 SQ. FT



Floor	Shackleton House	Counting House	6 Hay's Lane
5	LET	LET	3,340
4	13,080	LET	LET
3	13,000	10,903	LET
2	LET	10,685	3,808
1	12,600	LET	3,790
Total (sq. ft)	38,680	20,778	10,938

Avaiilability

SHACKLETON HOUSE



Level 5: **LET**

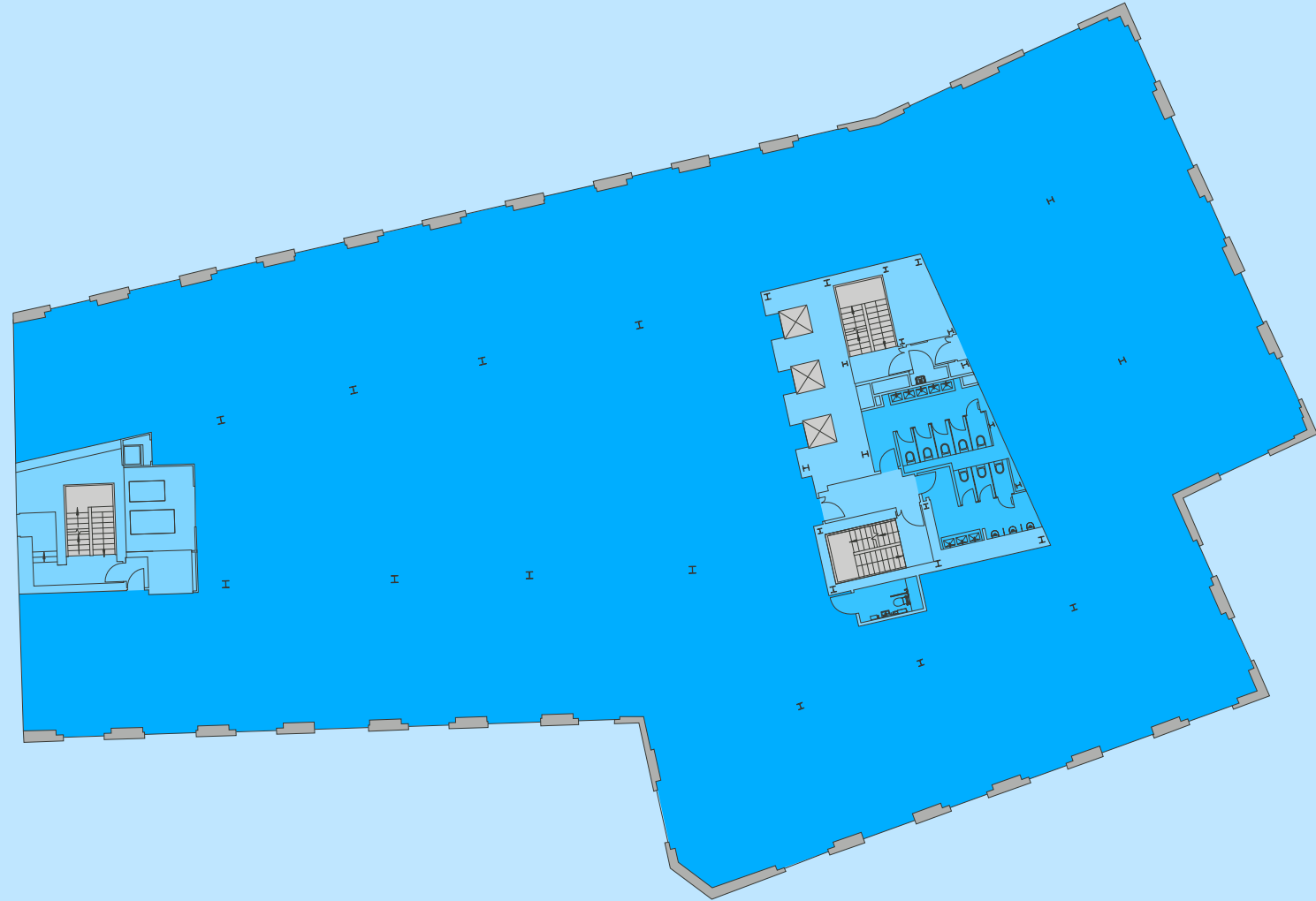
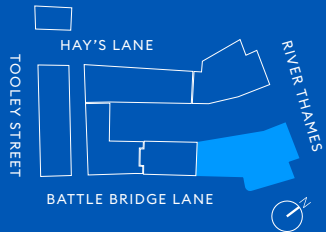
Level 4: **13,080 sq ft**

Level 3: **13,000 sq ft**

Level 2: **LET**

Level 1: **12,600 sq ft**

Typical Floor



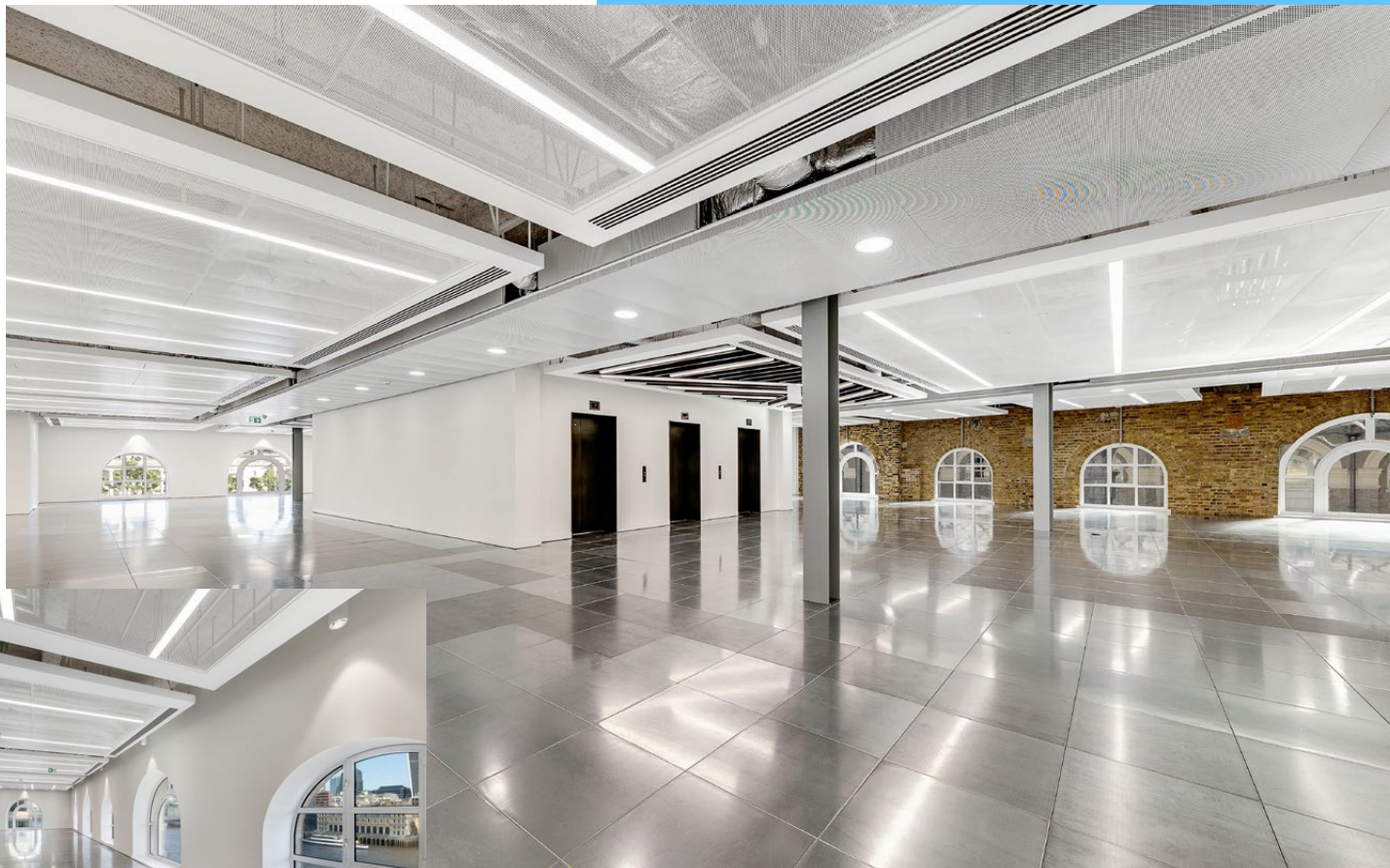
- Office
- Core
- Lifts / Stairs
- WC

Indicative floorplan

 [View online stacker](#)







▲ Level 4 CAT A workspace



▲ Indicative CGI view of the new reception

SHACKLETON HOUSE

Q1 2025



▲ Indicative CGI view of the new reception





Stunning Views

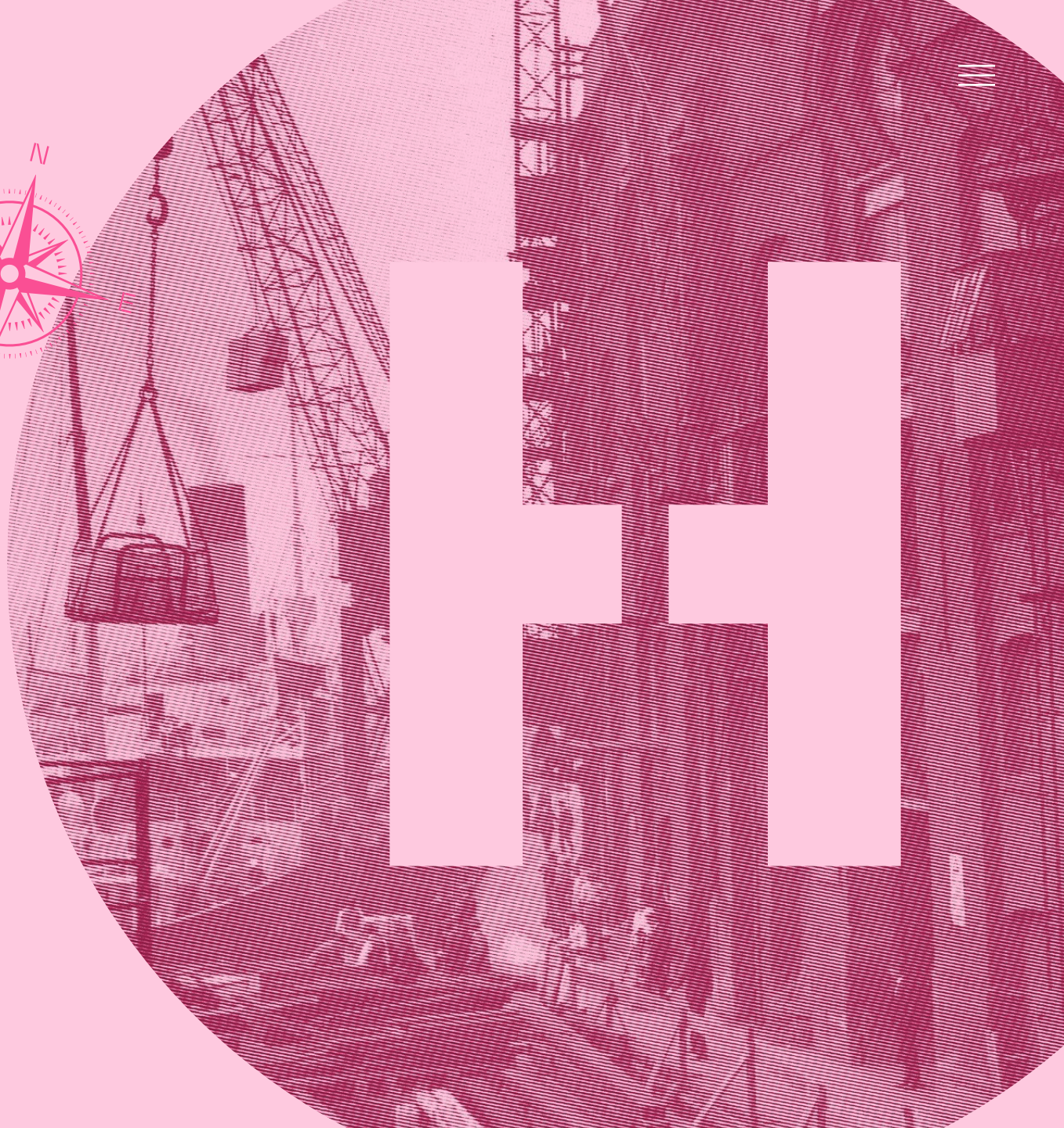
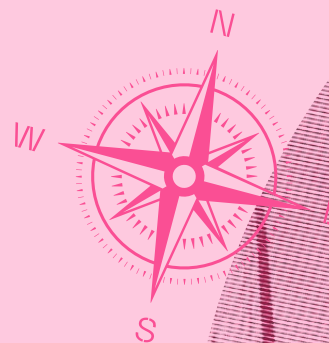
Positioned directly by The River Thames, Shackleton House offers stunning panoramic riverside views. In view you can see HMS Belfast, Tower Bridge and the City.



▲ The Queen's Walk



COUNTING HOUSE



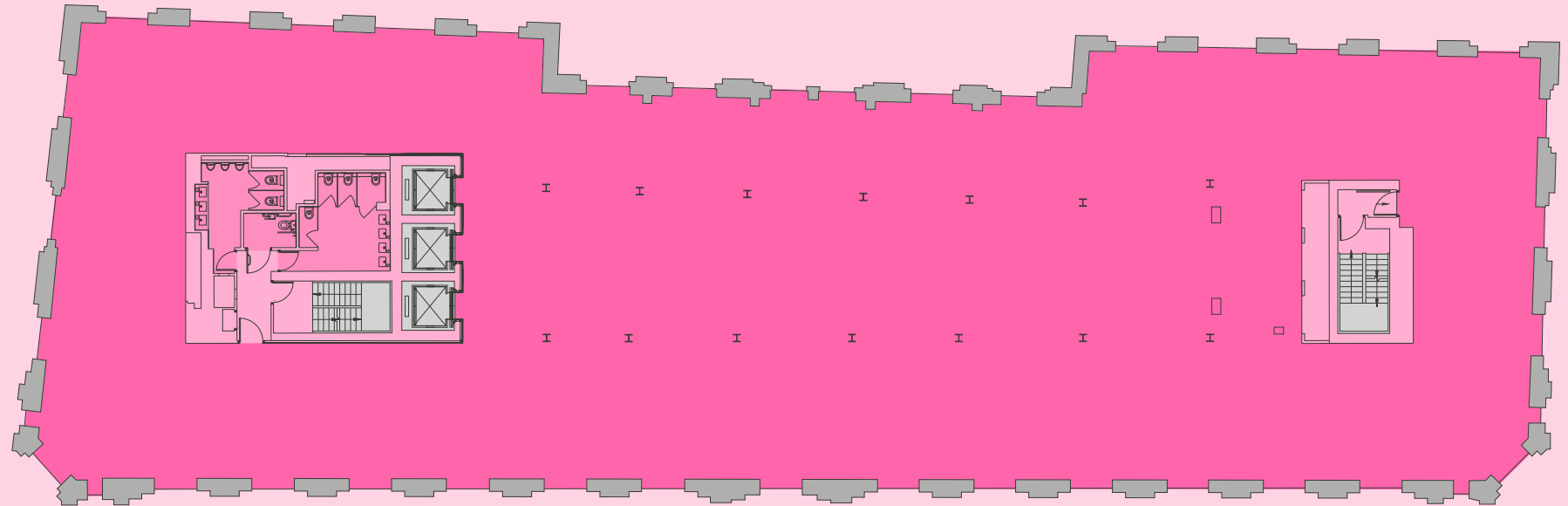
Level 5: **LET**

Level 4: **LET**

Level 3: **10,903 sq ft**

Level 2: **10,685 sq ft**

Level 1: **LET**

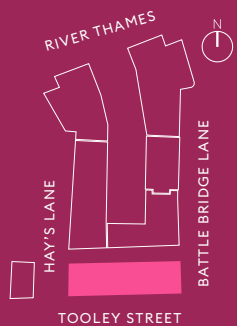


- Office
- Core
- Lifts / Stairs
- WC

Indicative floorplan



[View online stacker](#)



Contemporary & Flexible Workspace

Fronting onto Tooley Street, Counting House boasts bright, light and modern workspace with exposed brickwork and feature columns, positioned opposite London Bridge Station.

▼ Flooded with natural light



CAT A workspace ▲

▼ Heritage features



Within an Historical Context

COUNTING HOUSE

Q4 2025

Summary Specification



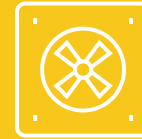
EPC B



New end of trip
facilities



Occupancy
ratio 1:8*



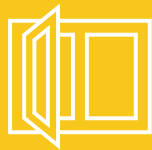
New 4-pipe fan coil
air conditioning



Heritage
features



Riverside
campus



Openable
windows



100% renewably
generated
electricity



3m floor-to-soffit
height



Car parking
available

*Bathroom occupancy ratio 1:10

Enquiries



Tim Plumbe
+44 (0) 7768 146 280
tim.plumbe@cushwake.com

James Taylor
+44 (0) 7899 843 767
james.taylor@cushwake.com

Hector Macneal
+44 (0) 7885 201 163
hector.macneal@cushwake.com

Tom Fayers
+44 (0) 7973 821 247
tom.fayers@cushwake.com

A scheme by

**ST
MARTINS**

Whilst the statements contained in these particulars are given in good faith and as a general guide to the property they do not form any part of an offer or contract. Neither the lessor, or any person in the employment of Cushman & Wakefield has any authority to make or give any representation or warranty whatsoever in relation to this property. Interested parties must satisfy themselves by inspection or otherwise as to the correctness of these particulars. Q4 2024.


LONDON BRIDGE CITY