



**CUSHMAN &
WAKEFIELD**

Plantation Place South, EC3

8,000 sq ft – 38,004 sq ft

Office to Let

SUBJECT TO CONTRACT

Location

Plantation Place South is a high quality office building located in the heart of EC3 within close proximity of the Lloyd's building. This area is home to a number of the worlds largest insurance companies as well as other key international investment banks and service sector businesses.

Public transport links are excellent with Monument, Tower Hill and Fenchurch Street stations all within a few minutes' walk of the property.

Building

Plantation Place South provides high quality refurbished, bright and open plan accommodation. The building reception has also been redesigned with the provision of a new reception desk, furniture and lighting.

Amenities (6th floor)

- New Category A condition
- New metal tiled suspended ceilings
- VAV air conditioning system
- New LED lighting
- 300mm raised floors
- 2.70m floor to ceiling height
- 6 x 16 person passenger lift
- Newly refurbished WCs
- Basement and bicycle storage

Lease

A new lease is available for a term by arrangement directly from the Landlord.

Availability

6th floor is currently available

4th floor available from August 2017

Viewing

Viewing strictly by appointment through Joint Agents Cushman & Wakefield and Newton Perkins.



Floor	Area (sq ft)	Area (sq m)
6 th	18,993	1,764
4 th	19,011	1,766
Total	38,004	3,530

** Subdivision considered from 8,000 sq ft upwards

Costs	Per sq ft exclusive
Rent	£59.50
Rates	£21.54
Service charge	£8.98





**CUSHMAN &
WAKEFIELD**

Plantation Place South, EC3

8,000 sq ft – 38,004 sq ft

Office to Let

For more information, contact:

James Oliver

+44 (0) 203 296 2004

James.Oliver@cushwake.com

Nick Russell-Smith

+44 (0) 203 296 2106

Nick.Russell-Smith@cushwake.com

EPC

E (106)

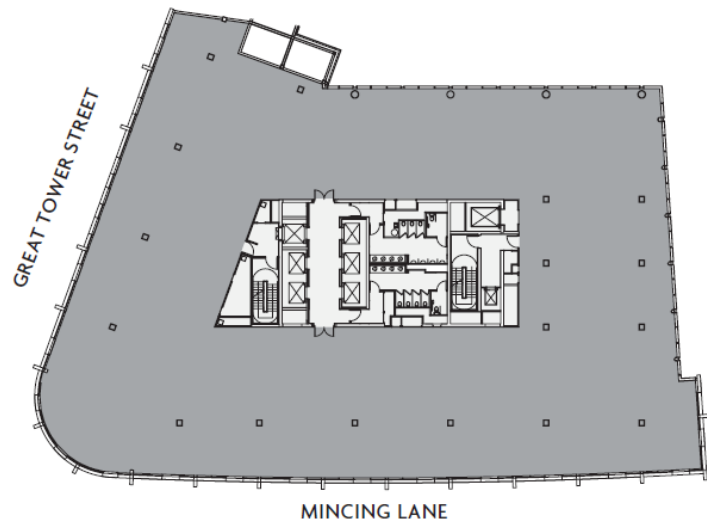
VAT

The building is VAT elected



6TH FLOOR CLEAR PLAN

18,993 sq ft / 1,765 sq m



cushmanwakefield.com

Cushman & Wakefield copyright 2015. No warranty or representation, express or implied, is made to the accuracy or completeness of the information contained herein, and same is submitted subject to errors, omissions, change of price, rental or other conditions, withdrawal without notice, and to any special listing conditions imposed by the property owner(s). As applicable, we make no representation as to the condition of the property (or properties) in question.