



**TD Autocare,
Lonsdale Street,
Newton Heath,
Manchester, M40**



CITRUS COMMERCIAL CIRCLE



Enquiries: 0161 383 1806
Citruscommercialcircle.co.uk

ANY ENQUIRIES



CITRUS COMMERCIAL CIRCLE

Business Hours

Mon – Fri: 9AM – 5PM

Sat – Sun: 9AM – 5PM (Out of Office)

Atrium House, 574 Manchester Road, Bury BL9 9SW

Contact Number: 0161 383 1806

Email: info@citruscommercialcircle.co.uk

citruscommercialcircle.co.uk



AVAILABLE NOW - Workshop/Storage/ Industrial units/ Office

Unit Size: 2551 sq ft

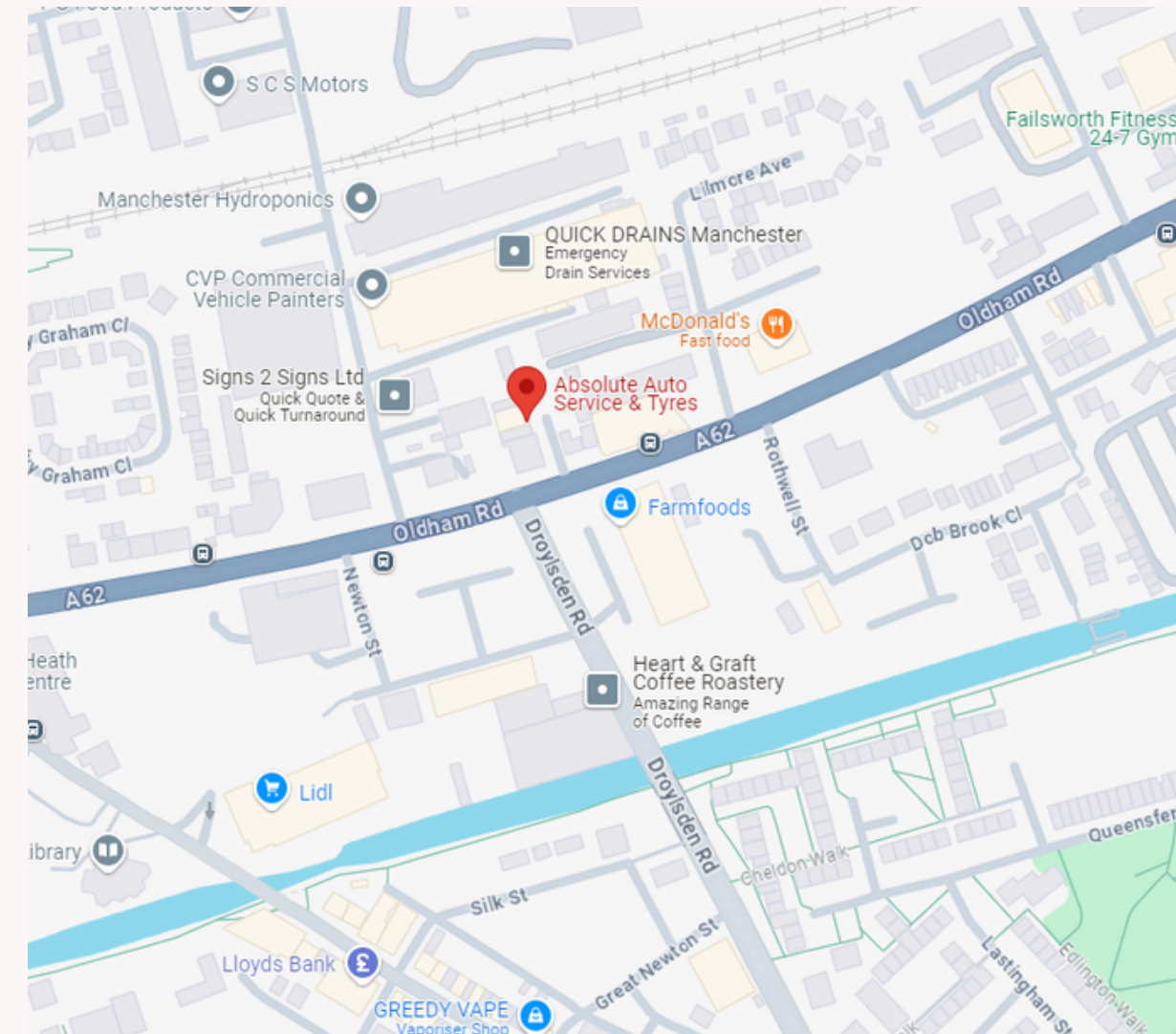
Sector: Industrial

Lease Type: 5 Years

Sale Price: Price on Application



TD Autocare, Lonsdale Street, Newton Heath Manchester, M40 2FT



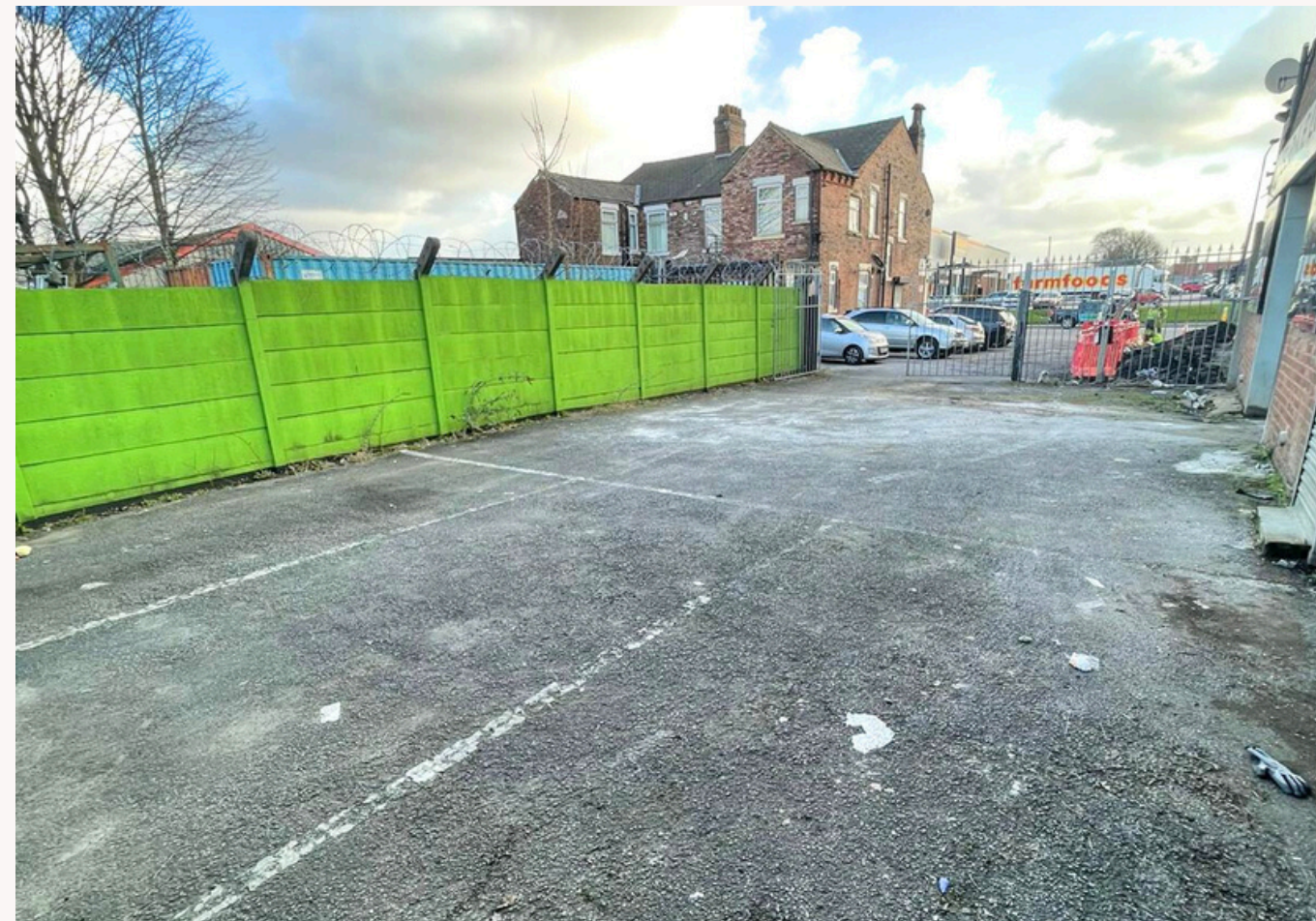
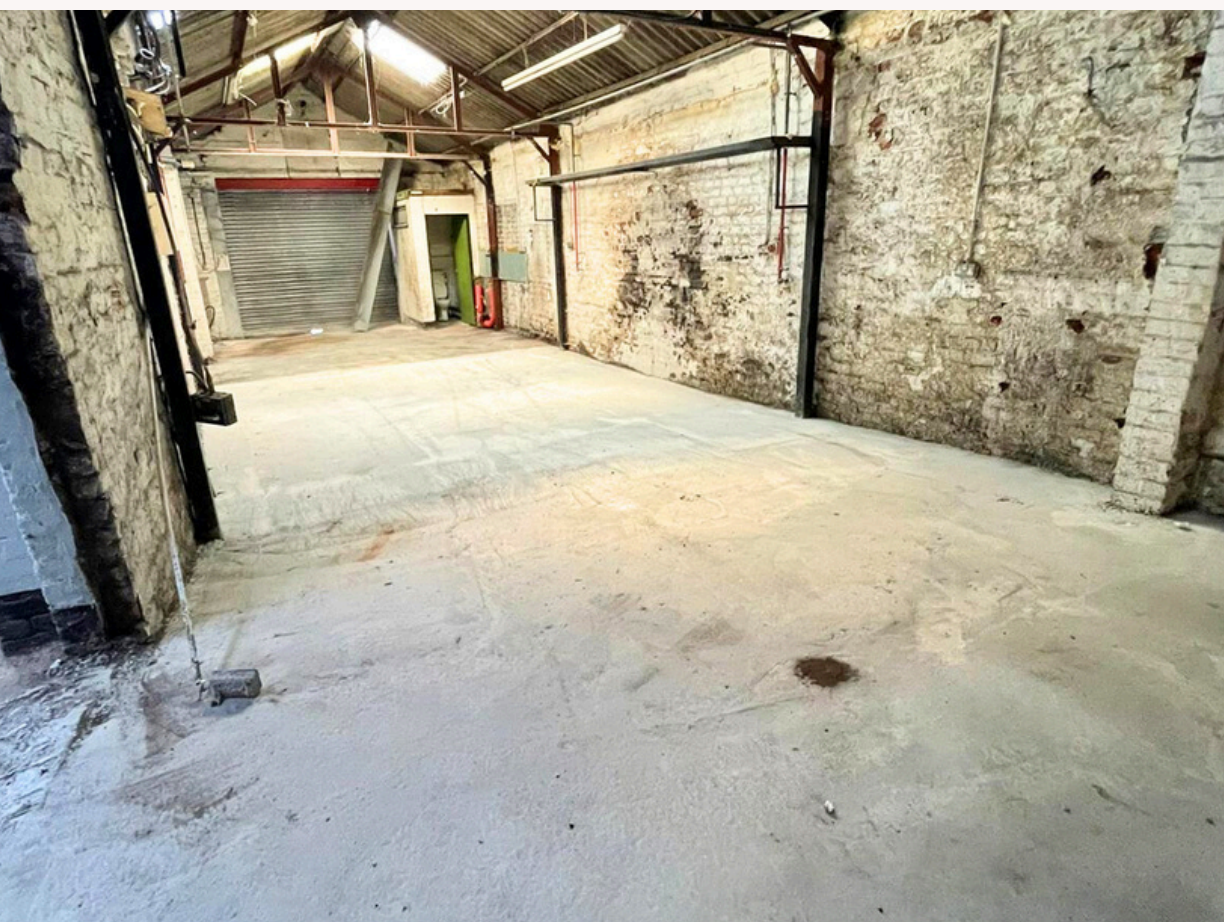
Lonsdale Street in Manchester (M40 2FT) is a strategic location due to its proximity to the city center, excellent transport links, and access to local amenities. The area is a growing hub for industrial and commercial activity, benefiting businesses with easy access to major roads and public transport. Ongoing development and regeneration add to its appeal, making it an attractive spot for both business and investment.

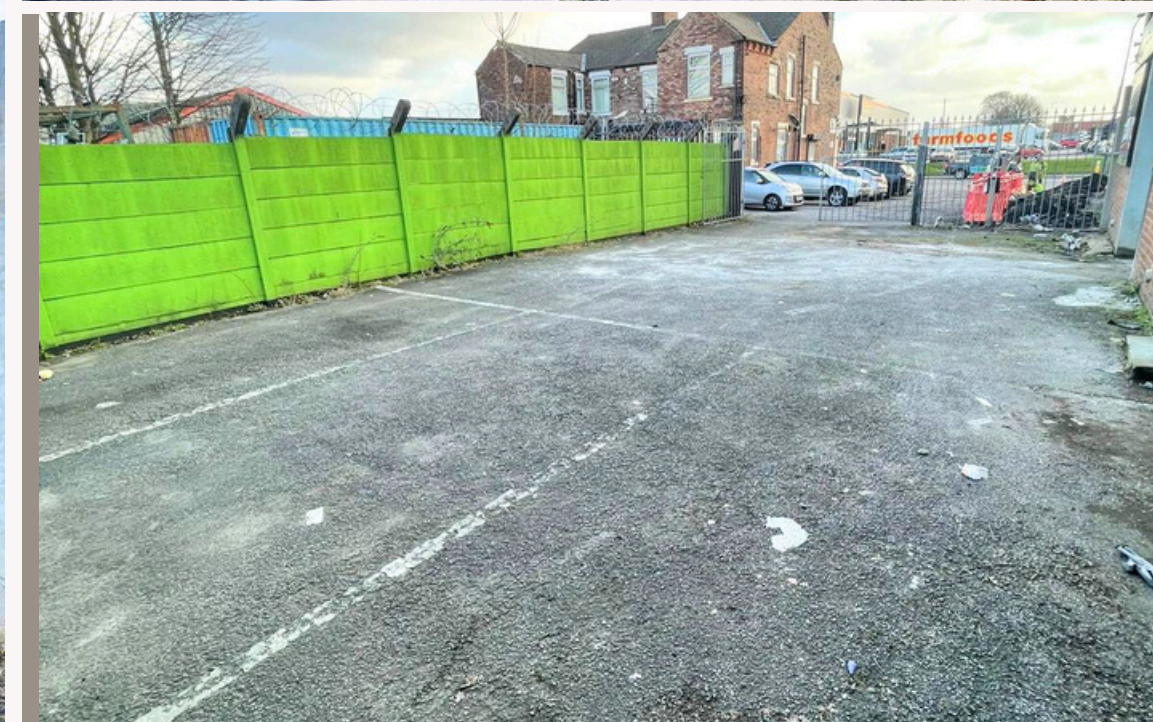
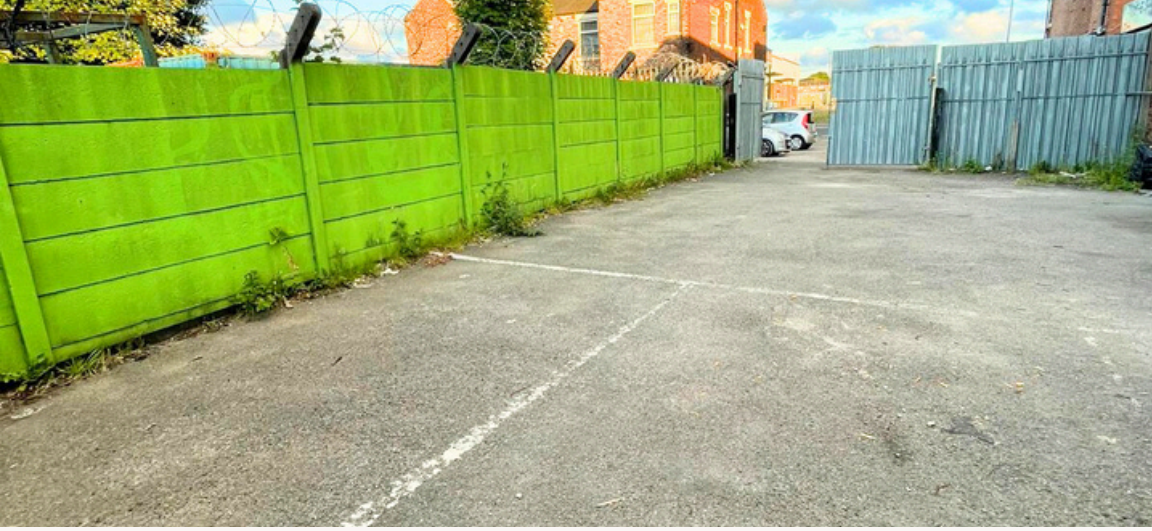




Property Features

- **Strategic Location Close to Manchester City Centre**
- **Current Auto Care Workshop**
- **Roller Shutter**
- **Ample Car Parking**
- **CCTV**
- **Gated Park Entrance**
- **Floodlights**
- **Established Workshop Place**
- **Vehicle Access & Turning area**





External Yard/Parking Spaces

This property comes with a secure external yard/parking spaces, meeting a variety of different business needs, and car parking requirements.



Units Internal View

The TD Autos property is well established with a variety of different business, car parking, security cameras, floodlighting, CCTV and a vehicle turning area to the rear.

The property is located 1 mile from Newton Heath centre and 3.4 miles from Manchester City Centre.

