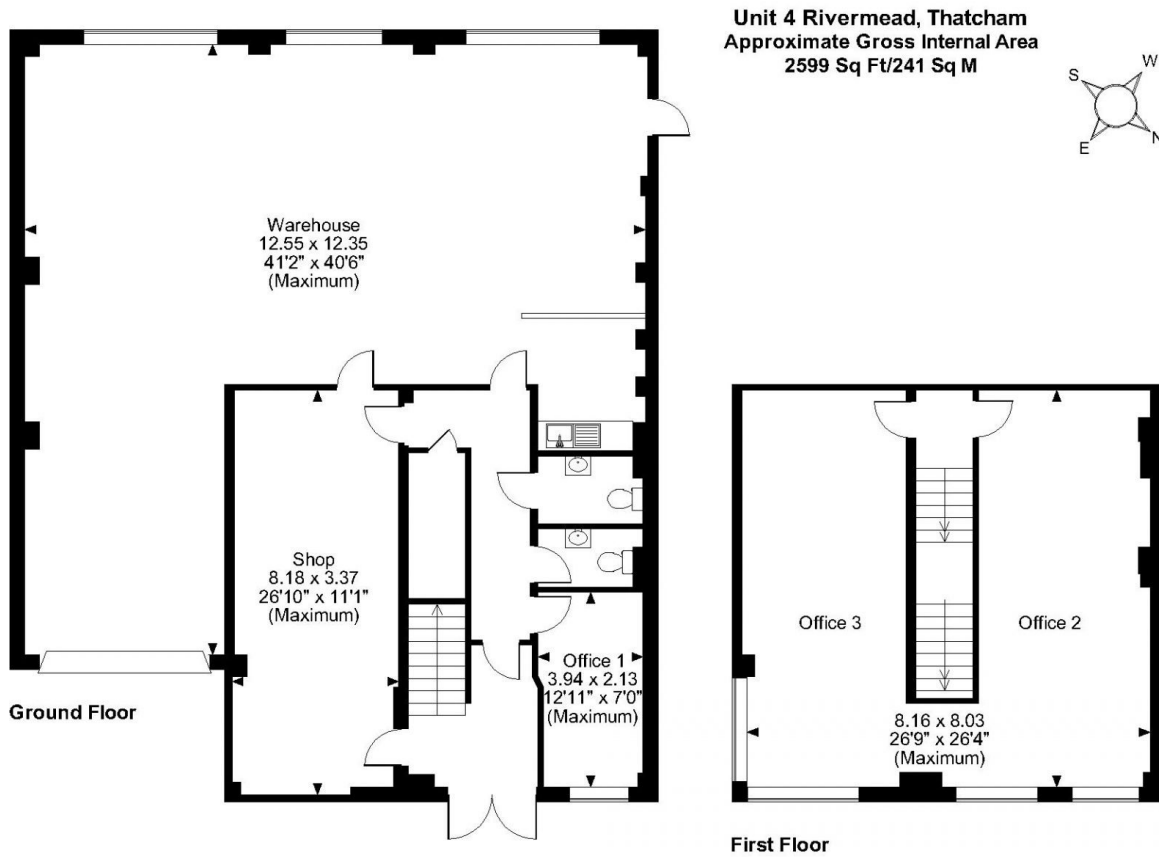


Floor Plans

UNIT 4 - 2463 SQ FT | RIVERMEAD BUSINESS PARK

Pipers Way, Thatcham, RG19 4EP



FOR ILLUSTRATIVE PURPOSES ONLY - NOT TO SCALE

The position & size of doors, windows, appliances and other features are approximate only.

© ehouse. Unauthorised reproduction prohibited. Drawing ref. dig/8586388/JPN